

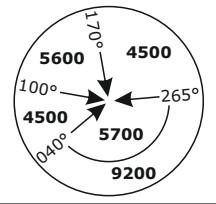
LSZH/ZRH

ZURICH, SWITZERLAND

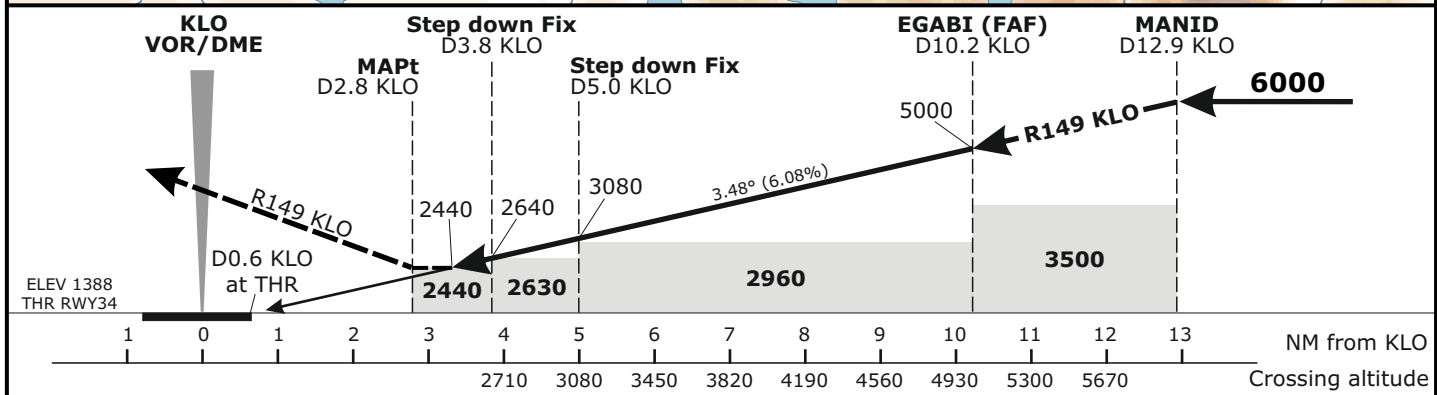
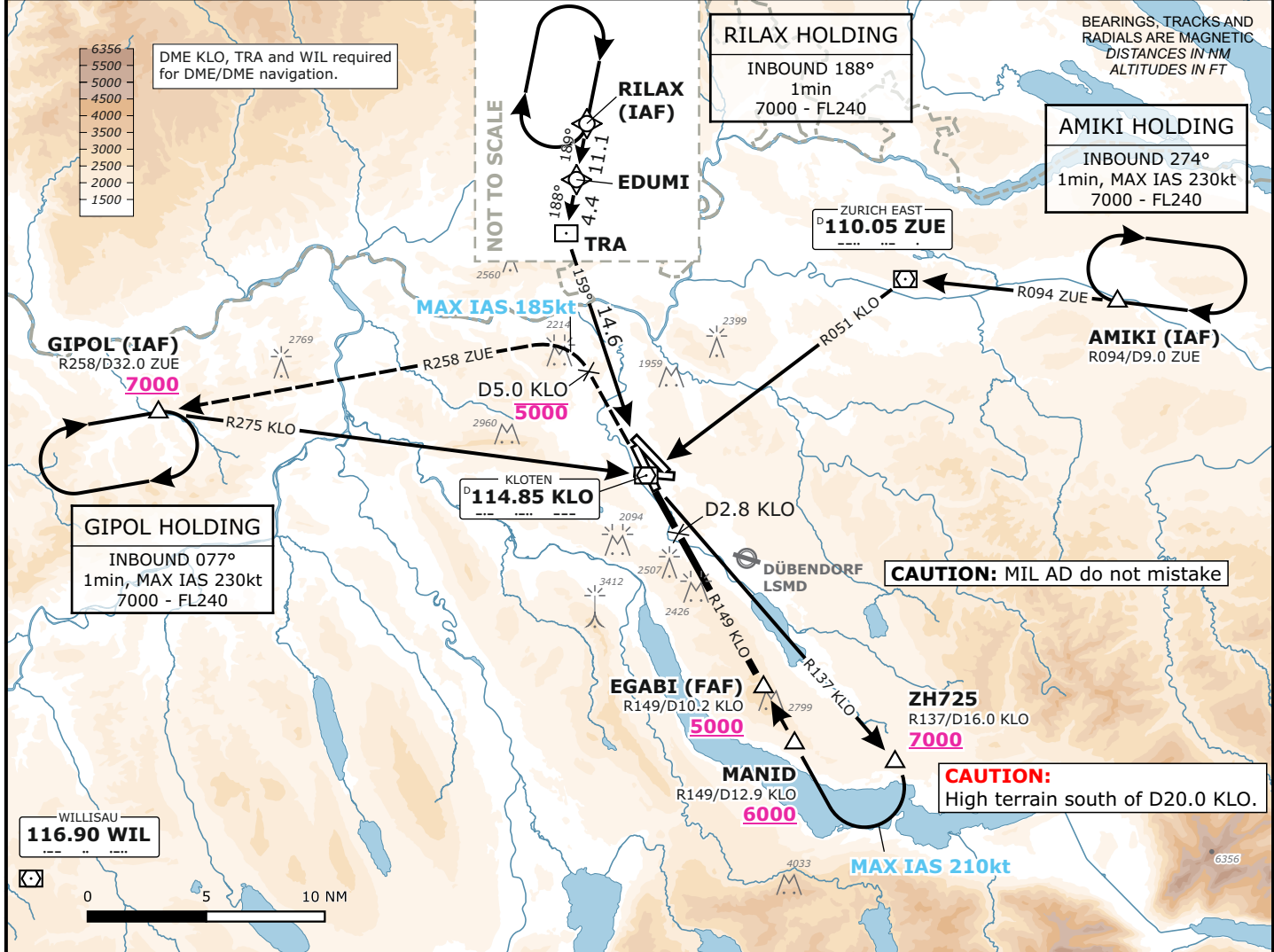
APCH CHART NO. 34-5
Revision 25 JAN 24

VOR
RWY 34

Frequencies			Missed Approach			MSA LSZH ARP		
Swiss Radar	135.015	133.050	Climb on R149 KLO. Initial climb to 5000 . When passing KLO continue on R329 KLO. At D5.0 KLO past the station turn LEFT (MAX IAS 185 kt during turn). Intercept R258 from ZUE. Continue climb to 7000 . Proceed to GIPOL.			Outer Circle: 25 NM Inner Circle: 17 NM		
Zurich Arrival	128.050	133.905						
Zurich Final	135.230	130.560						
Zurich Tower	125.330	-						
Zurich Apron	118.100	120.230						
Zurich ATIS	121.755	121.855	AD ELEV 1417ft			TRANS LVL by ATC		
						TRANS ALT 7000		



Valid for flight simulation use only - do not use for real life navigation



Minima					
MDA (H)				Visibility	Ceiling
CAT A	CAT B	CAT C	CAT D		
2440 (1060)				2500m	800

Changes: 8.33kHz frequencies