

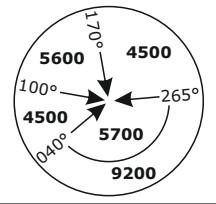
# LSZH/ZRH

## ZURICH, SWITZERLAND

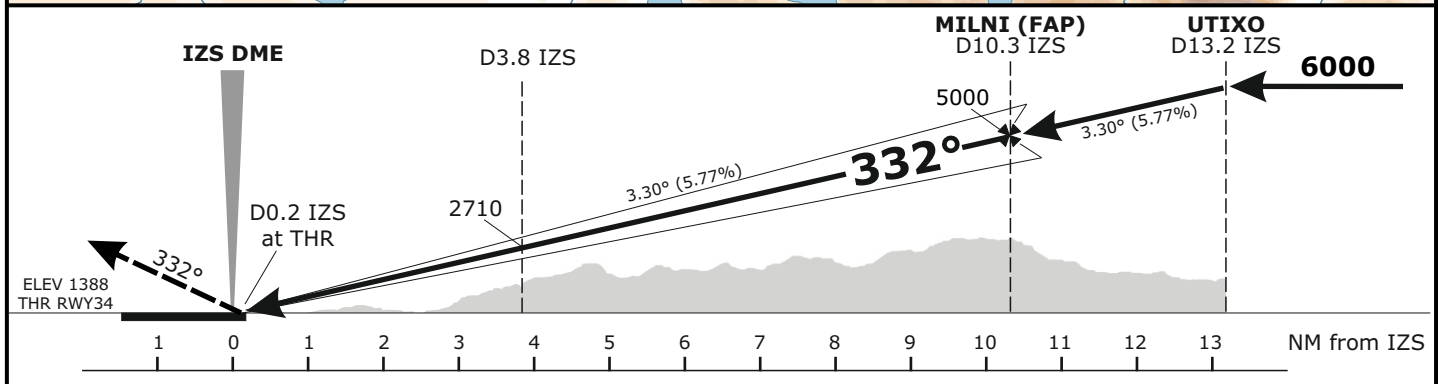
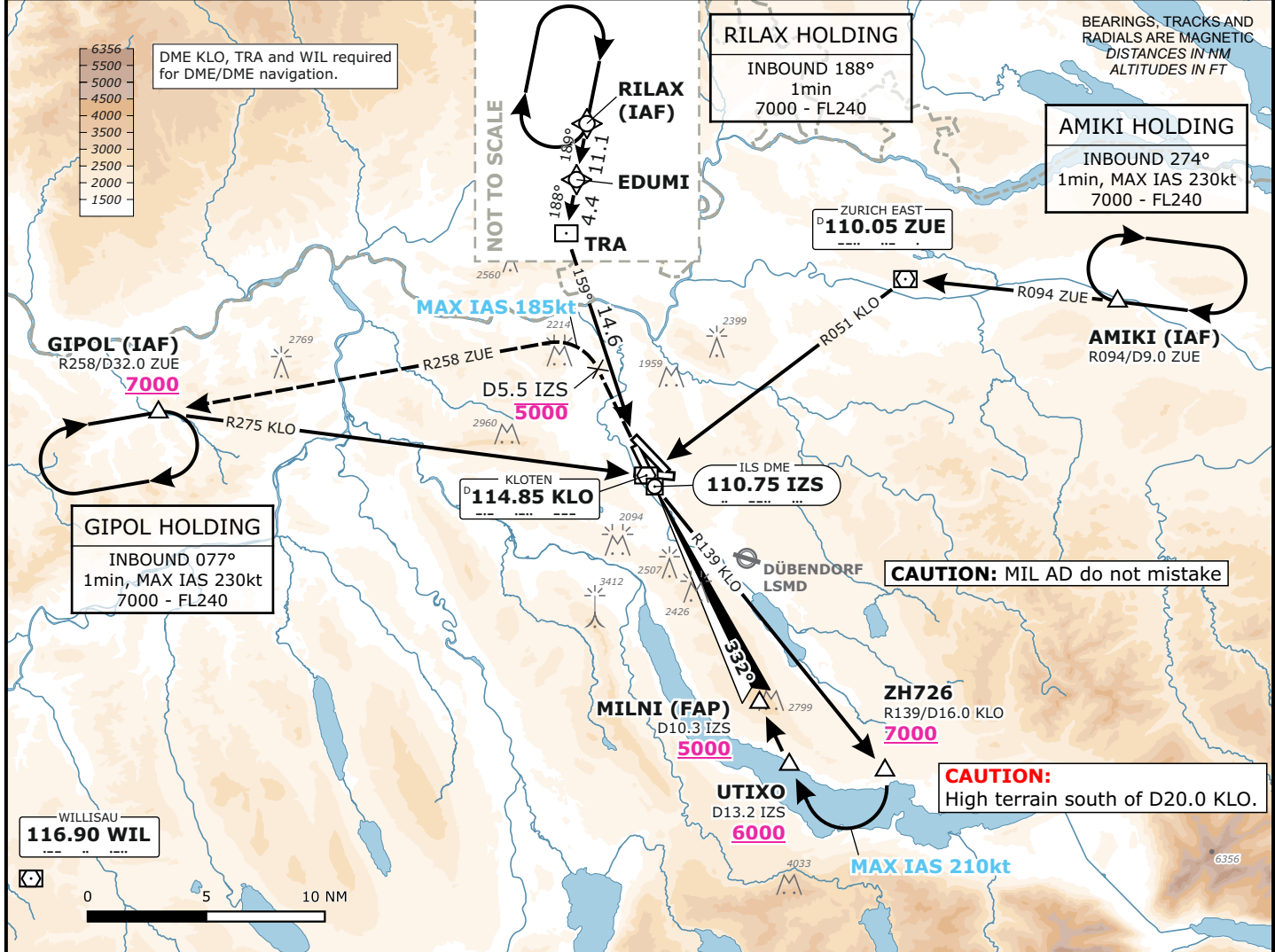
APCH CHART NO. 34-2  
Revision 25 JAN 24

**ILS**  
**RWY 34**

| Frequencies           |                 | Missed Approach   |                  | MSA LSZH ARP        |  |
|-----------------------|-----------------|---|------------------|---------------------|--|
| Swiss Radar           | 135.015 133.050 | Climb straight ahead. Initial climb to <b>5000</b> .<br>At D5.5 IZS past the station turn <b>LEFT</b> (MAX IAS 185 kt during turn).<br>Intercept R258 from ZUE.<br>Continue climb to <b>7000</b> .<br>Proceed to GIPOL. |                  | Outer Circle: 25 NM |  |
| Zurich Arrival        | 128.050 133.905 |   |                  | Inner Circle: 17 NM |  |
| Zurich Final          | 135.230 130.560 |   |                  |                     |  |
| Zurich Tower          | 125.330 -       |   |                  |                     |  |
| Zurich Apron          | 118.100 120.230 |   |                  |                     |  |
| Zurich ATIS           | 121.755 121.855 |   |                  |                     |  |
| Zurich ATIS 125.730 - |                 | AD ELEV 1417ft  | TRANS LVL by ATC | TRANS ALT 7000      |  |



Valid for flight simulation use only - do not use for real life navigation



| Minima |            |       |       |       |            |         |
|--------|------------|-------|-------|-------|------------|---------|
| CAT I  | DA (H)     |       |       |       | Visibility | Ceiling |
|        | CAT A      | CAT B | CAT C | CAT D |            |         |
|        | 1588 (200) |       |       |       | 750m       | 300     |

Changes: 8.33kHz frequencies