

# LSZH/ZRH

## ZURICH, SWITZERLAND

APCH CHART NO. 28-5  
Revision 25 JAN 24

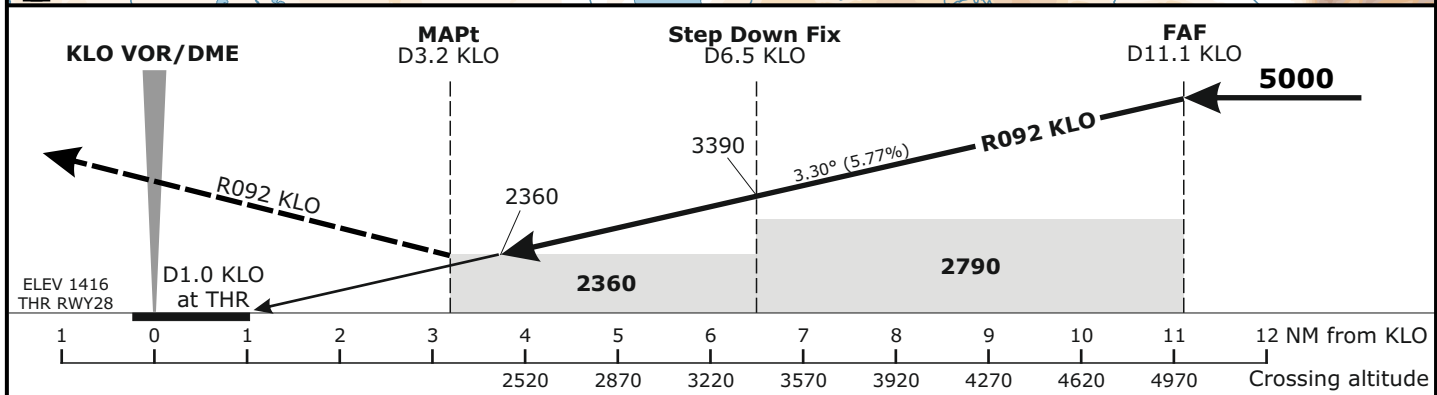
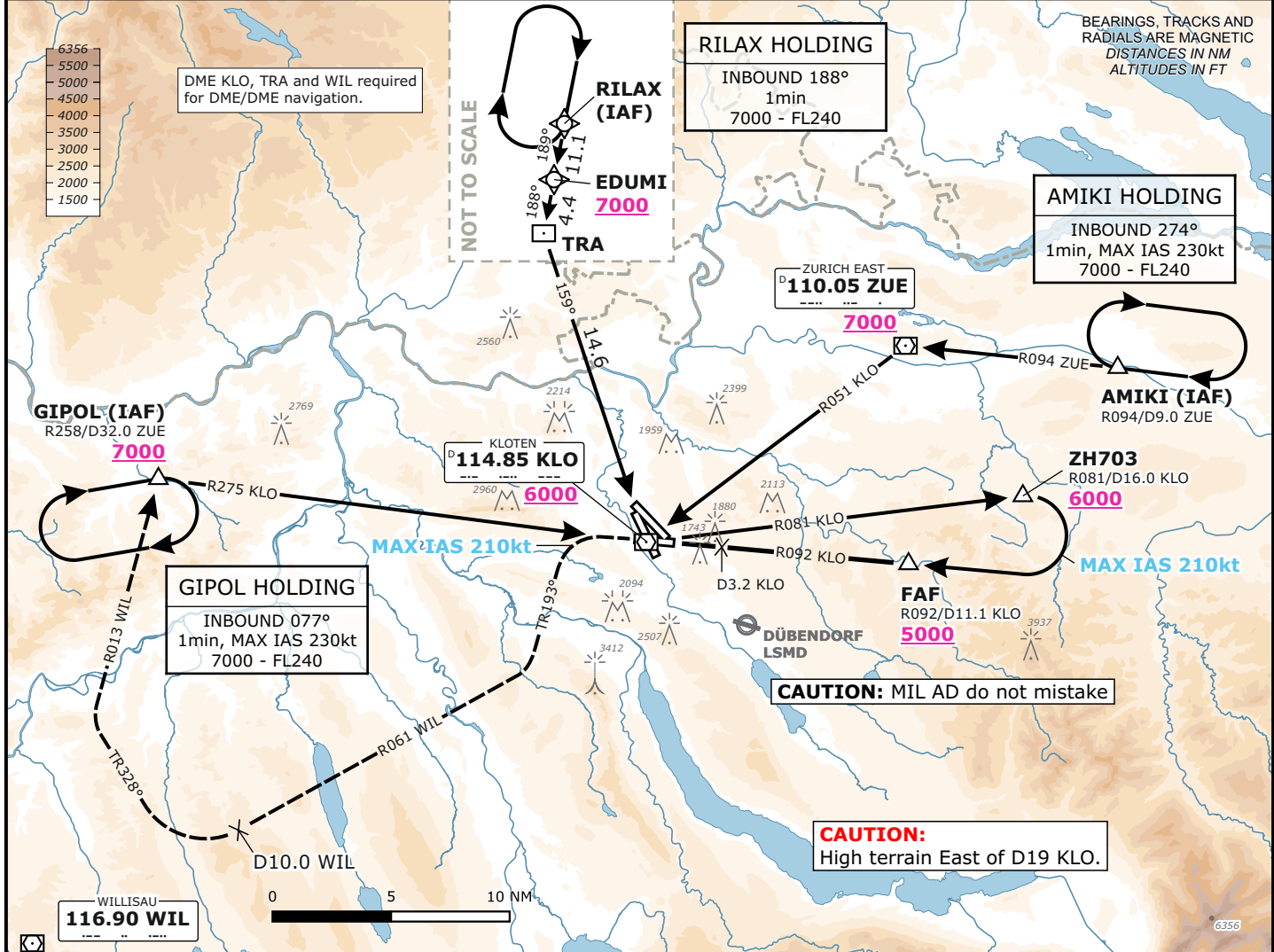
**VOR**  
**RWY 28**

Frequencies		
Swiss Radar	135.015	133.050
	128.050	133.905
Zurich Arrival	135.230	130.560
Zurich Final	125.330	-
Zurich Tower	118.100	120.230
Zurich Apron	121.755	121.855
Zurich ATIS	125.730	-

Missed Approach		
Initial climb to <b>4000</b> . Climb on R092 KLO. When passing KLO continue on R272 from KLO.		
At D1.6 KLO past the station turn left on track 193°. When established on track continue climb to <b>7000</b> .		
Intercept R061 to WIL. At D10.0 to WIL turn right onto track 328°.		
Intercept R013 from WIL. Proceed to GIPOL.		
AD ELEV 1417ft	TRANS LVL by ATC	TRANS ALT 7000

**MSA LSZH ARP**  
Outer Circle: 25 NM  
Inner Circle: 17 NM

BEARINGS, TRACKS AND RADIALS ARE MAGNETIC  
DISTANCES IN NM  
ALTITUDES IN FT



Minima				Remarks	
MDA (H)				Visibility	Ceiling
CAT A	CAT B	CAT C	CAT D		
2360 (950)				4300m	1200
Do not confuse RWY 32 with RWY 28.					

Valid for flight simulation use only - do not use for real life navigation

Changes: 8.33kHz frequencies