

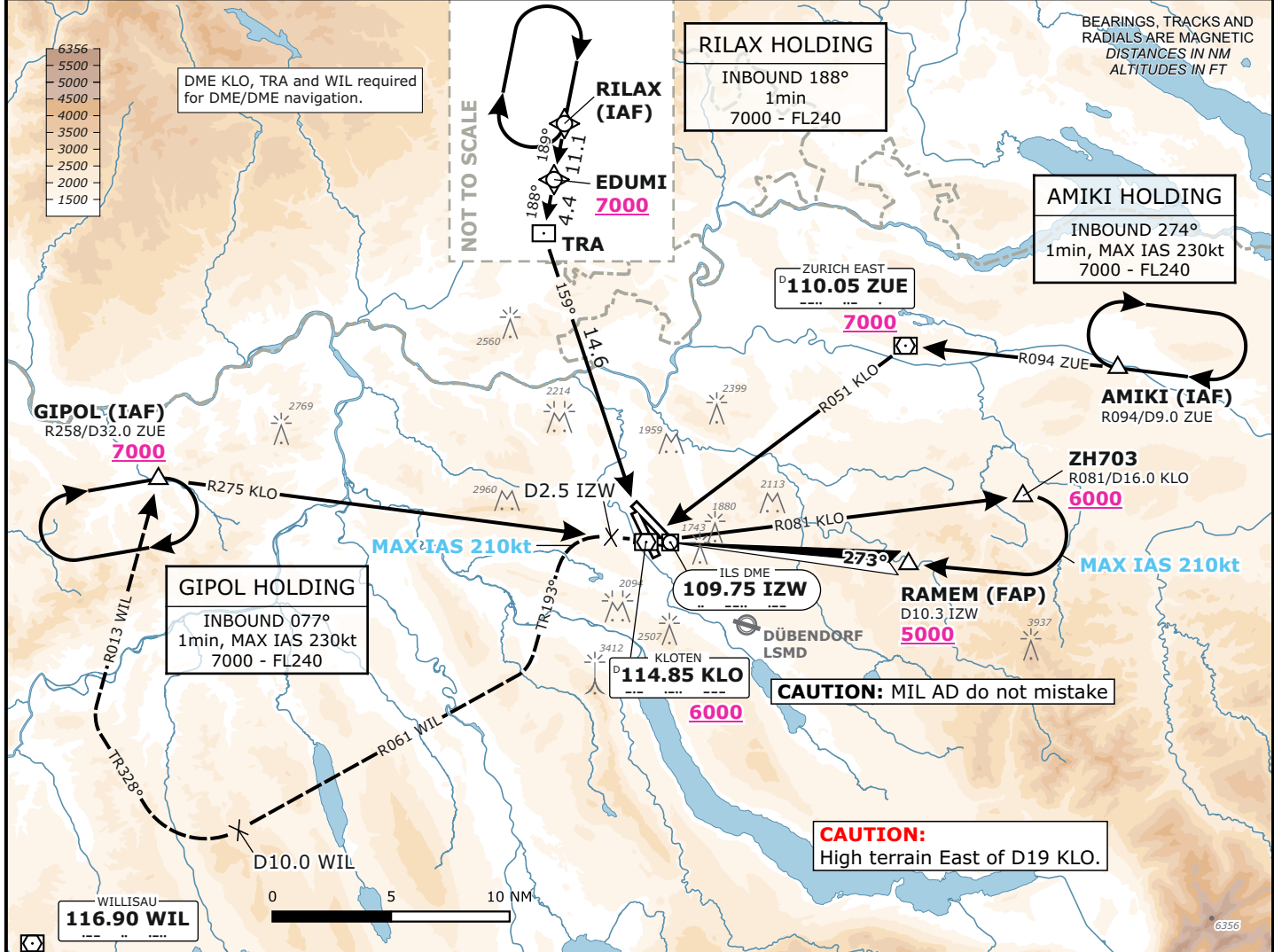
LSZH/ZRH

ZURICH, SWITZERLAND

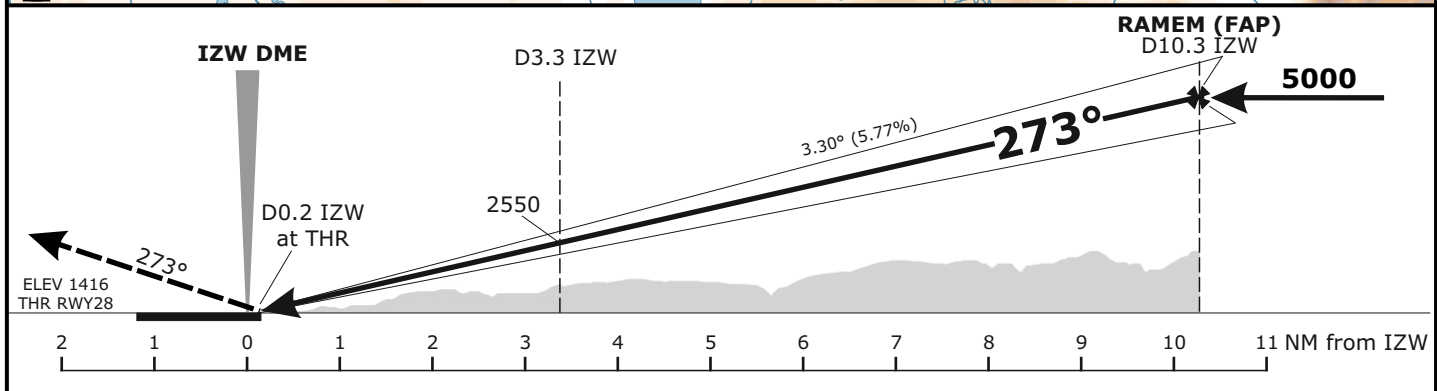
APCH CHART NO. 28-2
Revision 25 JAN 24

ILS
RWY 28

Frequencies			Missed Approach			MSA LSZH ARP		
Swiss Radar	135.015	133.050	Climb straight ahead. Initial climb to 4000 . At D2.5 IZW past the station turn LEFT (MAX IAS 210 KT) onto track 193°, then continue climb to 7000 . Intercept R061 to WIL. At D10 WIL to the station turn RIGHT onto track 328°, intercept R013 from WIL. Proceed to GIPOL.			Outer Circle: 25 NM Inner Circle: 17 NM		
Zurich Arrival	135.230	130.560						
Zurich Final	125.330	-						
Zurich Tower	118.100	120.230						
Zurich Apron	121.755	121.855						
Zurich ATIS	125.730	-	AD ELEV 1417ft	TRANS LVL by ATC	TRANS ALT 7000			



Valid for flight simulation use only - do not use for real life navigation



Minima					Remarks	
CAT I	DA (H)				Visibility	Ceiling
	CAT A	CAT B	CAT C	CAT D		
CAT I	2091 (675)	2092 (676)	2102 (686)		4300m	900
Do not confuse RWY 32 with RWY 28.						

Changes: 8.33kHz frequencies