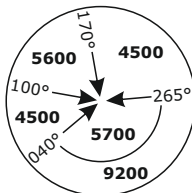


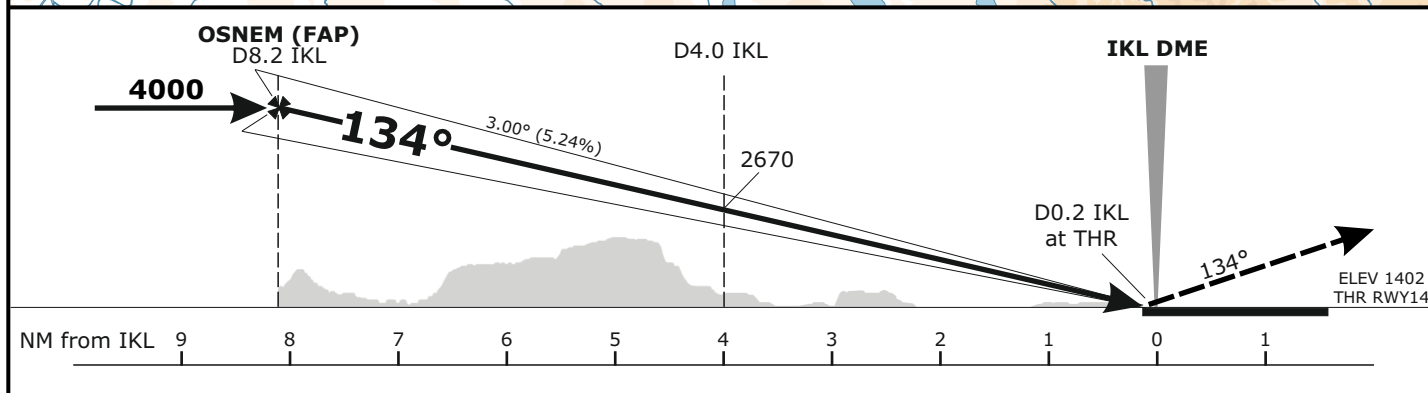
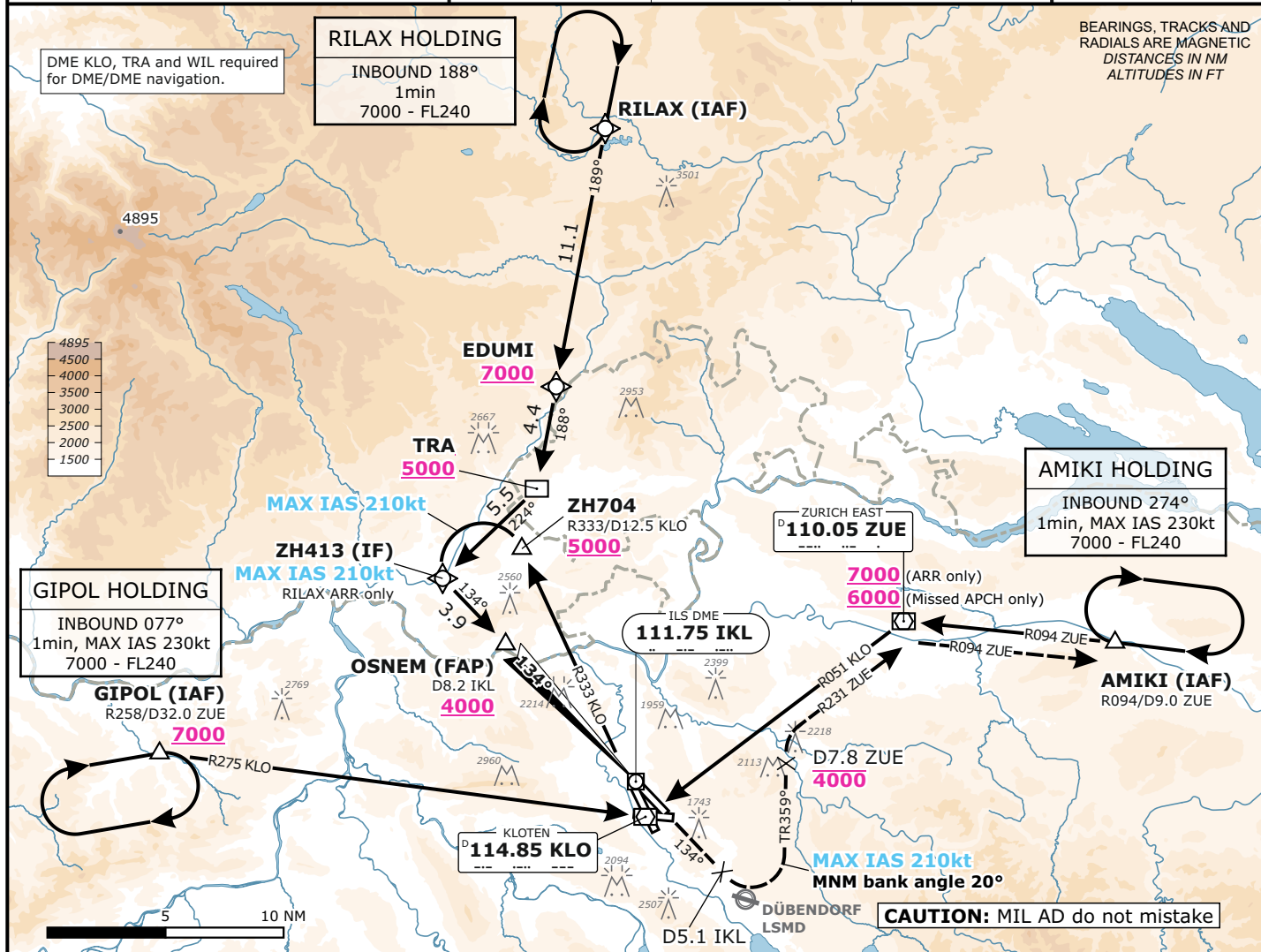
LSZH/ZRH

ZURICH, SWITZERLAND

APCH CHART NO. 14-2
Revision 25 JAN 24

ILS
RWY 14

Frequencies			Missed Approach			MSA LSZH ARP		
Swiss Radar	135.015	133.050	Climb straight ahead. Initial climb to 4000 . At D5.1 IKL past the station turn LEFT (MAX IAS 210 KT) onto track 359° to intercept R231 to ZUE. At D7.8 ZUE continue climb to 7000 . Proceed to ZUE. Cross ZUE at MNM 6000 and intercept R094 from ZUE. Proceed to AMIKI.			Outer Circle: 25 NM Inner Circle: 17 NM 		
Zurich Arrival	135.230	130.560						
Zurich Final	125.330	-						
Zurich Tower	118.100	120.230						
Zurich Apron	121.755	121.855						
Zurich ATIS	125.730	-	AD ELEV 1417ft	TRANS LVL by ATC	TRANS ALT 7000			



	Minima				RA	RVR	Remarks
	DA (H)						
	CAT A	CAT B	CAT C	CAT D			Flight crew's responsibility to accept «swing over» to RWY 16, if proposed by ATC.
CAT I		1602 (200)			187	550m	
CAT II		1502 (100)			95	300m	
CAT IIIa		50				200m	
CAT IIIb						75m	

Valid for flight simulation use only - do not use for real life navigation

Changes: 8.33kHz frequencies