

LSZA/LUG

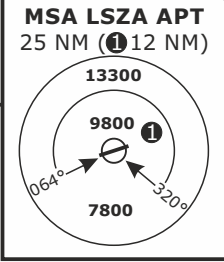
LUGANO, SWITZERLAND

SID CHART NO.1
Revision 07 OCT 21

RNAV 1 **SID**
CANNE/OMETO

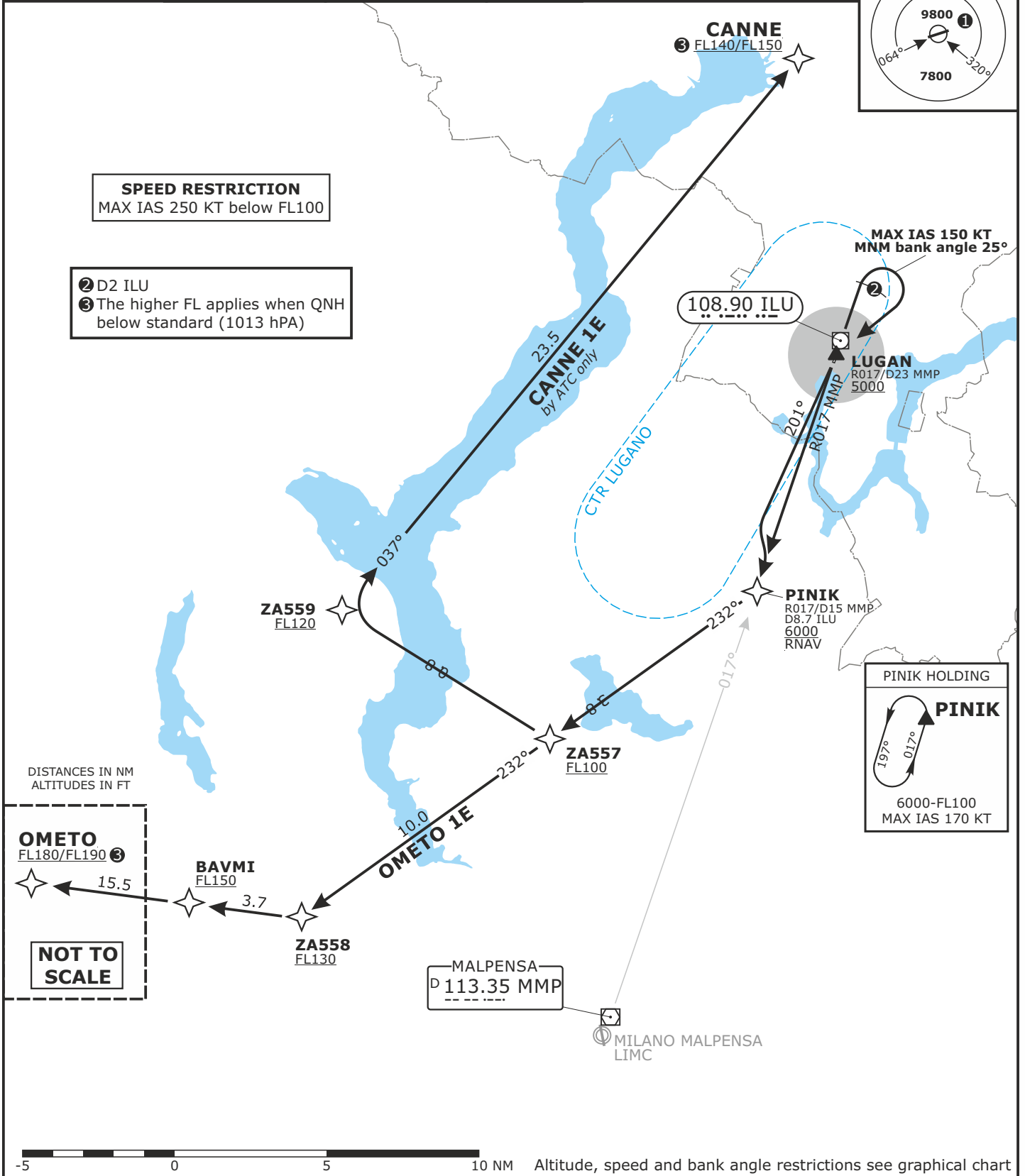
Valid for flight simulation use only - do not use for real life

SWISS Radar LSAS_CTR 128.05	MILANO Radar LIMM_N_CTR 127.45	MILANO Radar LIMM_N_APP 126.75	Apt Elev 915	Alt Set: hPa (IN on request) Trans level: by ATC Trans alt: 6000	MSA LSZA APT 25 NM (12 NM)
-----------------------------------	--------------------------------------	--------------------------------------	------------------------	--	--------------------------------------



SPEED RESTRICTION
MAX IAS 250 KT below FL100

- ② D2 ILU
- ③ The higher FL applies when QNH below standard (1013 hPa)



Altitude, speed and bank angle restrictions see graphical chart

Initial climb clearance by ATC

RWY	Initial Climb	SID	ROUTING
01	Climb straight ahead. At D2 ILU turn RIGHT, proceed to LUGANO.	CANNE 1E <i>by ATC only</i>	Proceed to PINIK. Proceed via ZA557 and ZA559 to CANNE.
19	HIGH PERFORMANCE SID Climb on track 201 until receiving MMP. Intercept R017 to MMP.	OMETO 1E	Proceed to PINIK. Proceed via ZA557, ZA558 and BAVMI to OMETO.

CHANGES: New chart

LSZA/LUG

LUGANO, SWITZERLAND

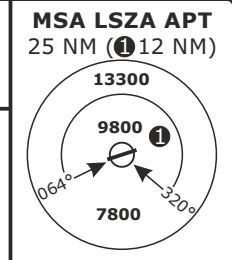
SID CHART NO.2
Revision 07 OCT 21

NON-RNAV SID

CANNE/OMETO/PINIK

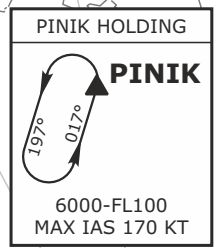
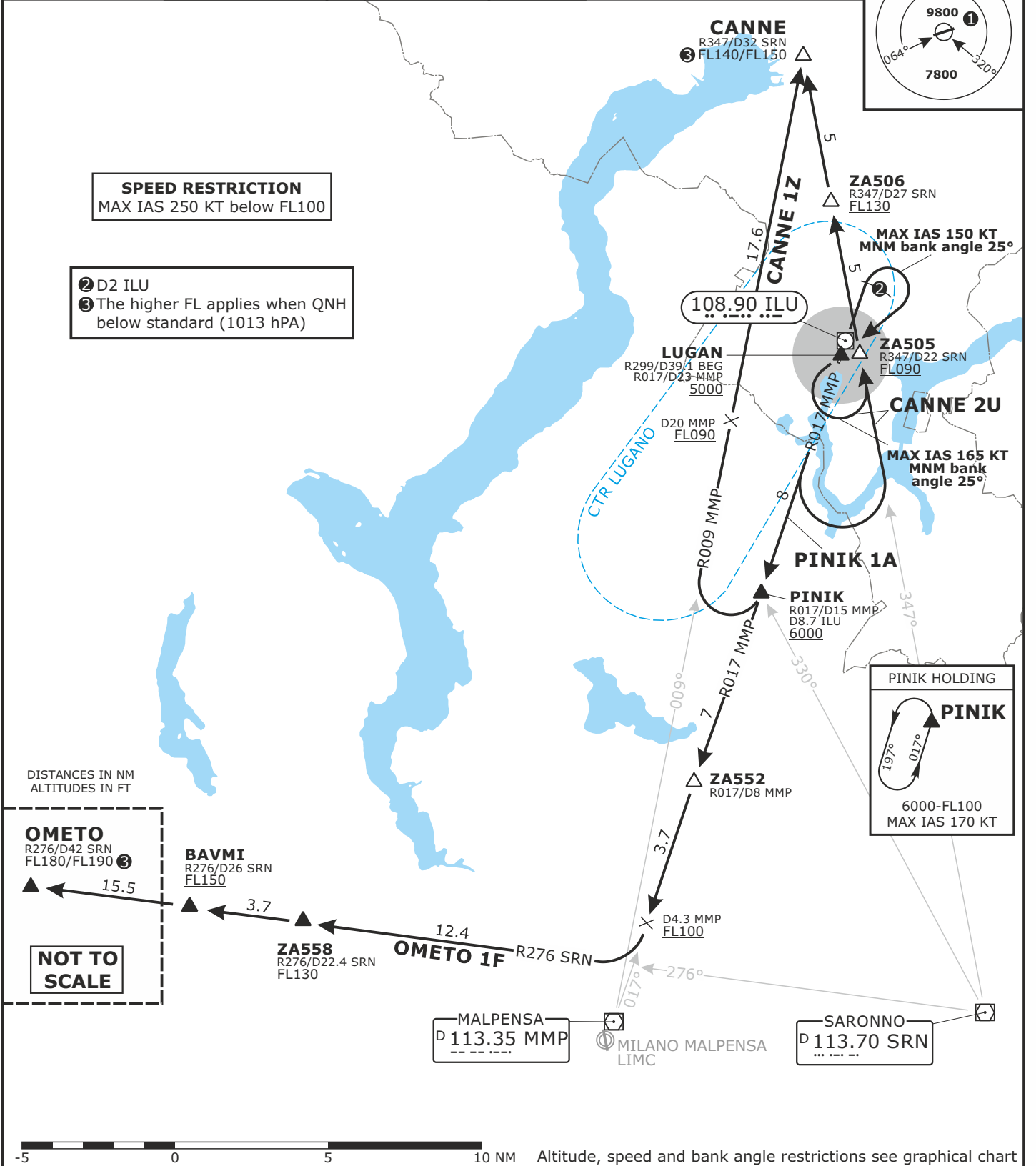
Valid for flight simulation use only - do not use for real life

SWISS Radar LSAS_CTR 128.05	MILANO Radar LIMM_N_CTR 127.45	MILANO Radar LIMM_N_APP 126.75	Apt Elev 915	Alt Set: hPa (IN on request) Trans level: by ATC Trans alt: 6000	MSA LSZA APT 25 NM (12 NM)
-----------------------------------	--------------------------------------	--------------------------------------	------------------------	--	--------------------------------------



SPEED RESTRICTION
MAX IAS 250 KT below FL100

- ② D2 ILU
- ③ The higher FL applies when QNH below standard (1013 hPa)



DISTANCES IN NM
ALTITUDES IN FT

OMETO
R276/D42 SRN
FL180/FL190 ③

BAVMI
R276/D26 SRN
FL150

OMETO 1F
R276 SRN

ZA558
R276/D22.4 SRN
FL130

MALPENSA
D 113.35 MMP

MILANO MALPENSA
LIMC

SARONNO
D 113.70 SRN

NOT TO SCALE



Initial climb clearance by ATC

RWY	Initial Climb	SID	ROUTING
01	Climb straight ahead. At D2 ILU turn RIGHT, proceed to LUGAN.	CANNE 1Z	Proceed to PINIK. At PINIK turn RIGHT, intercept R009 from MMP. Proceed to CANNE.
		CANNE 2U	When passing 5000 turn LEFT, intercept R347 from SRN. Proceed to
19	HIGH PERFORMANCE SID Climb on track 201 until receiving MMP. Intercept R017 to MMP.	OMETO 1F	Proceed to PINIK. Follow R017 to MMP. At D4.3 MMP turn RIGHT, intercept R276 from SRN to ZA558. Proceed via BAVMI to OMETO.
		PINIK 1A	Proceed to PINIK. Enter PINIK HLDG.

CHANGES: CANNE 1W and OMETO 1W withdrawn, OMETO 1F added, chart number

LSZA/LUG

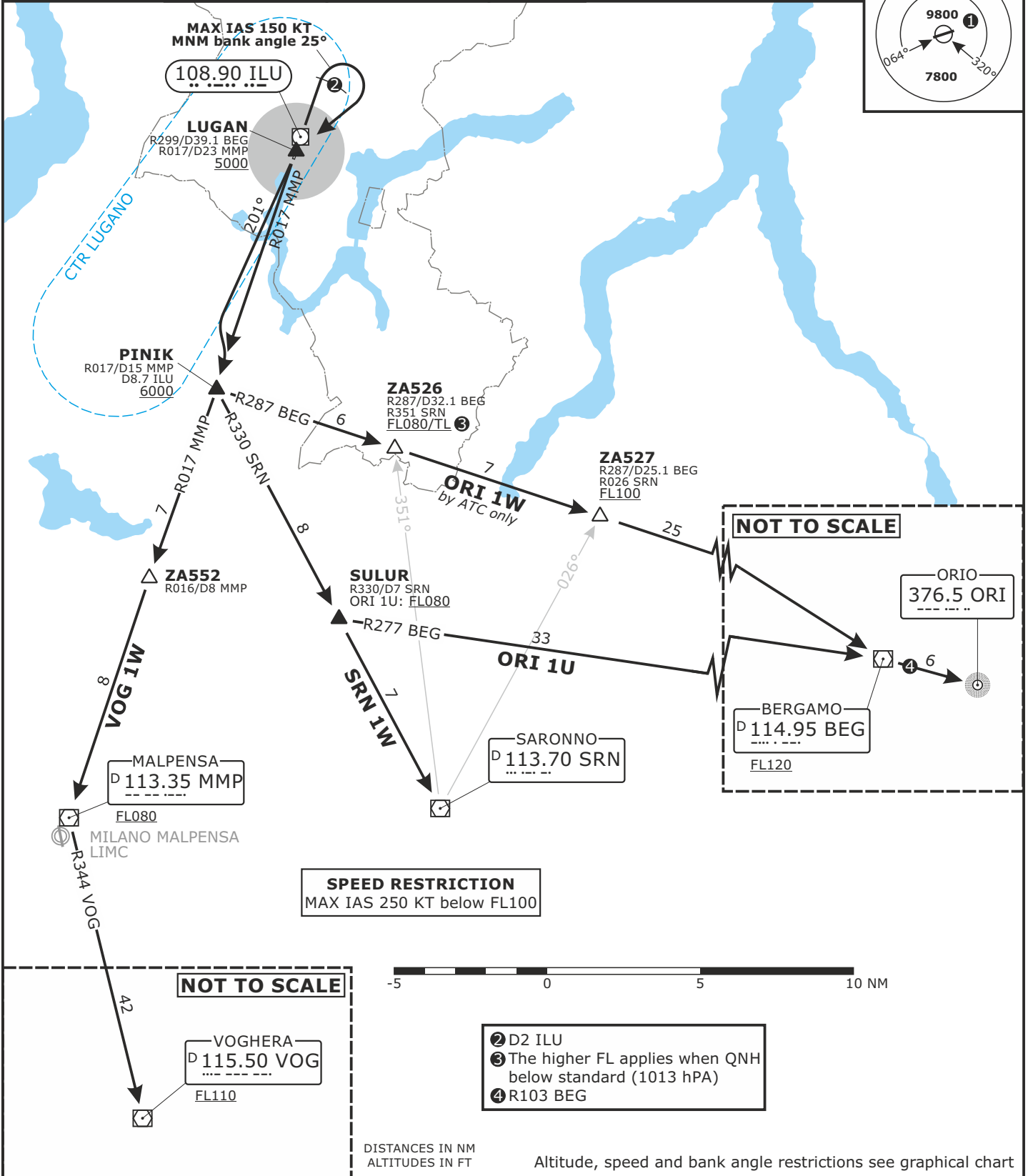
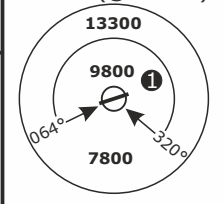
LUGANO, SWITZERLAND

SID CHART NO.3
Revision 07 OCT 21

NON-RNAV **SID**
ORI/SRN/VOG

Valid for flight simulation use only - do not use for real life

SWISS Radar LSAS_CTR 128.05	MILANO Radar LIMM_N_CTR 127.45	MILANO Radar LIMM_N_APP 126.75	Apt Elev 915	Alt Set: hPa (IN on request) Trans level: by ATC Trans alt: 6000	MSA LSZA APT 25 NM (12 NM)
-----------------------------------	--------------------------------------	--------------------------------------	------------------------	--	--------------------------------------



SPEED RESTRICTION
MAX IAS 250 KT below FL100



- ② D2 ILU
- ③ The higher FL applies when QNH below standard (1013 hPa)
- ④ R103 BEG

DISTANCES IN NM
ALTITUDES IN FT
Altitude, speed and bank angle restrictions see graphical chart

Initial climb clearance by ATC

RWY	Initial Climb	SID	ROUTING
01	Climb straight ahead. At D2 ILU turn RIGHT, proceed to LUGANO.	ORI 1U	Proceed to PINIK. At PINIK intercept R330 to SRN. Proceed to SULUR. At SULUR intercept R277 to BEG. Proceed via BEG to ORI.
19	HIGH PERFORMANCE SID Climb on track 201 until receiving MMP. Intercept R017 to MMP.	ORI 1W <i>by ATC only</i>	Proceed to PINIK. At PINIK intercept R287 to BEG. Proceed via BEG to ORI.
		SRN 1W	Proceed to PINIK. At PINIK intercept R330 to SRN. Proceed to SRN.
		VOG 1W	Proceed via PINIK and ZA552 to MMP. At MMP intercept R344 to VOG. Proceed to VOG.

CHANGES: Chart number, climbing track 201