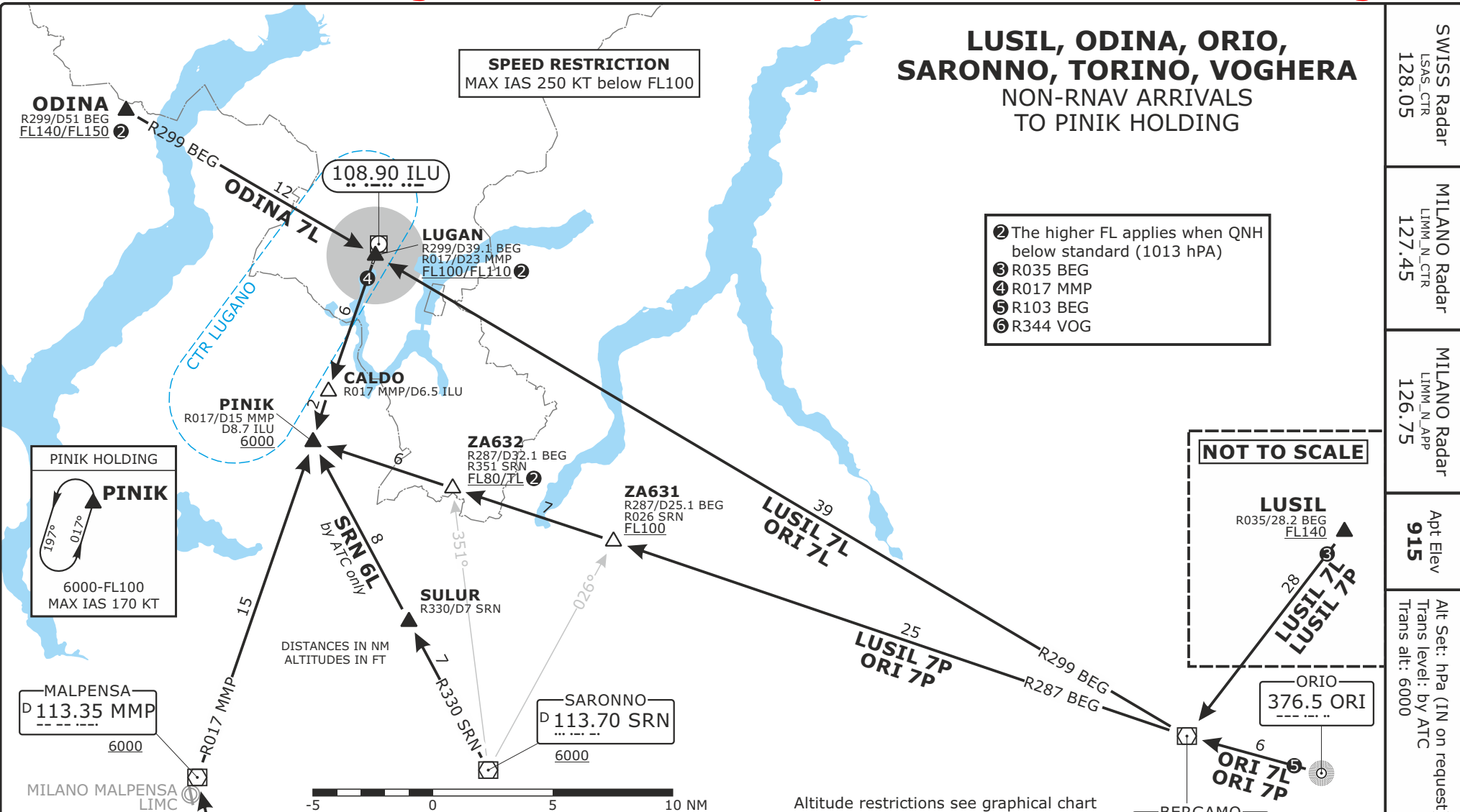


Valid for flight simulation use only - do not use for real life navigation

© VACC Switzerland

www.vacc.ch

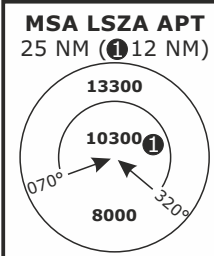
charts@vacc.ch



LUSIL, ODINA, ORIO, SARONNO, TORINO, VOGHERA NON-RNAV ARRIVALS TO PINIK HOLDING

- ② The higher FL applies when QNH below standard (1013 hPa)
- ③ R035 BEG
- ④ R017 MMP
- ⑤ R103 BEG
- ⑥ R344 VOG

NOT TO SCALE



STAR ROUTING	
LUSIL 7L	LUSIL - R035 BEG - BEG - R299 BEG - LUGAN - R017 MMP - PINIK
LUSIL 7P	LUSIL - R035 BEG - BEG - R287 BEG - PINIK
ODINA 7L	ODINA - R299 BEG - LUGAN - R017 MMP - PINIK
ORI 7L	ORI - R103 BEG - BEG - R299 BEG - LUGAN - R017 MMP - PINIK
ORI 7P	ORI - R103 BEG - BEG - R287 BEG - PINIK
SRN 6L	SRN - R330 SRN - SULUR - PINIK
TOP 6L	TOP - R085 TOP - VOG - R344 VOG - MMP - R017 MMP - PINIK
VOG 6L	VOG - R344 VOG - MMP - R017 MMP - PINIK

LSZA/LUG
LUGANO, SWITZERLAND

STAR CHART NO.1
Revision 13 SEP 18

ALL DIRECTIONS
STAR

SWISS Radar
LSAS_CTR
128.05

MILANO Radar
LIMM_N_CTR
127.45

MILANO Radar
LIMM_N_APP
126.75

Apt Elev
915

Alt Set: hPa (IN on request)
Trans level: by ATC
Trans alt: 6000