

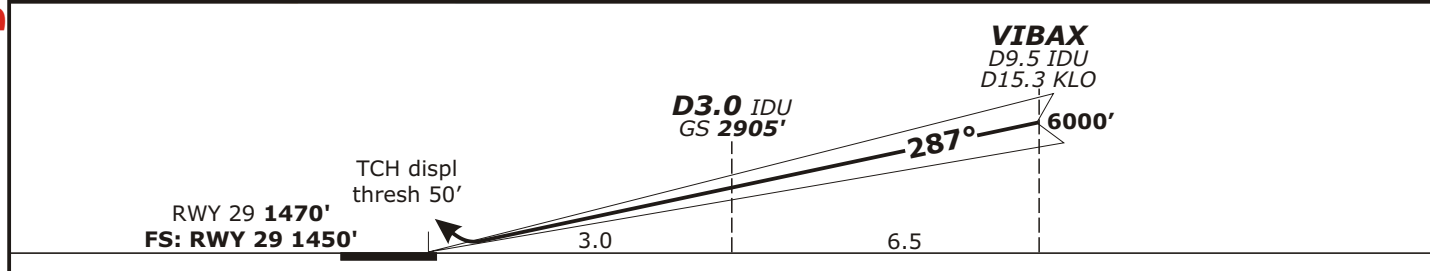
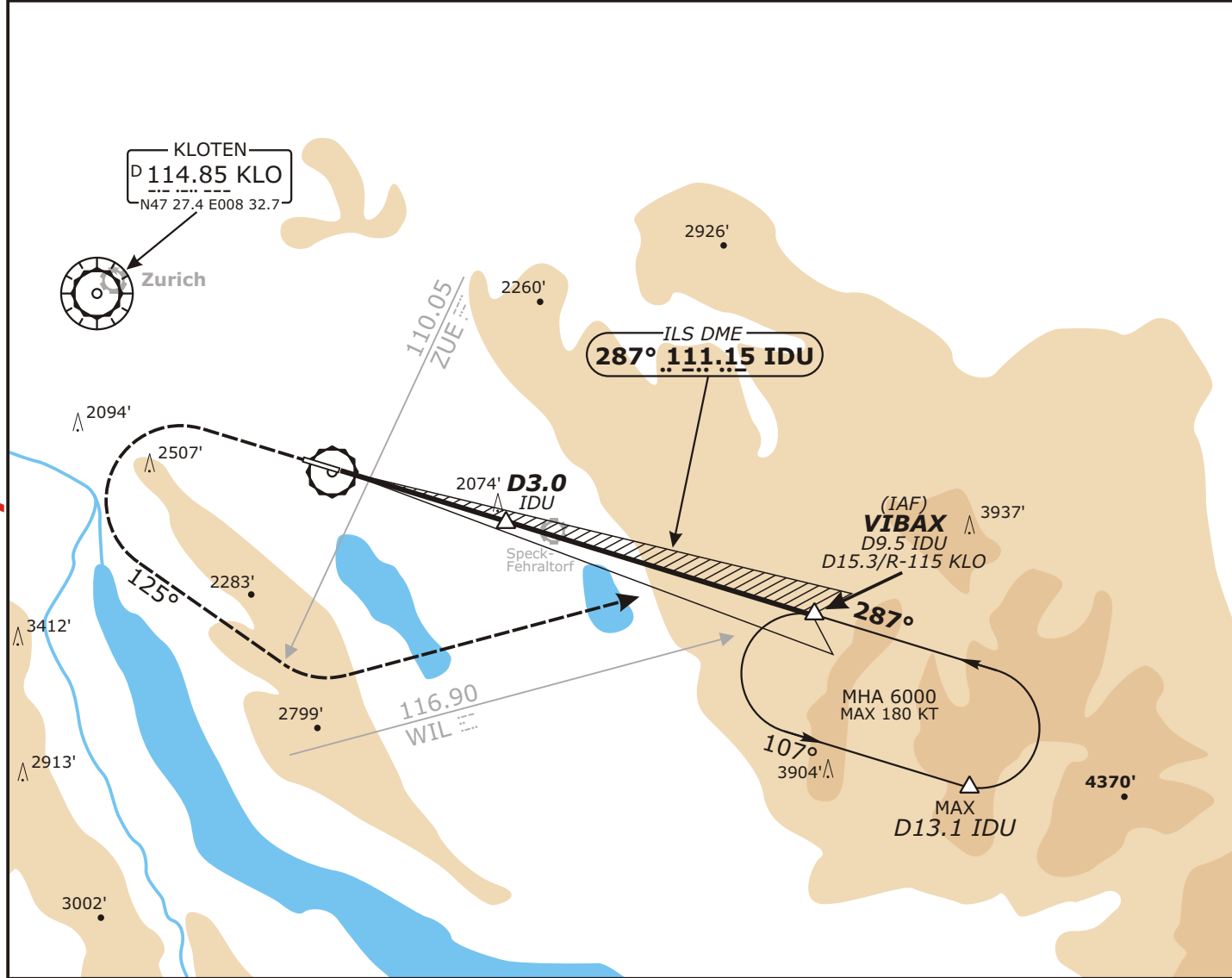
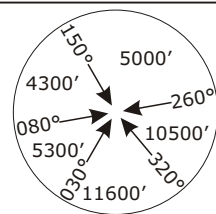
Valid for flight simulation use only - do not use for real life navigation

LSMD  
DUBENDORF AB

APP CHART NO.1  
Initial 24 JAN 08

DUBENDORF, SWITZERLAND  
ILS DME Rwy 29

Swiss Radar LSAS_CTR 128.05	Zurich Arrival LSZH_APP 120.75	Zurich Tower LSZH_TWR 118.10	DUBENDORF Arrival LSMD_APP 134.92	DUBENDORF Tower LSMD_TWR 128.47
LOC IDU <b>111.15</b>	Final Apch Crs <b>287°</b>	GS <b>D3.0 IDU</b> <b>2905'</b> (1435')	ILS DA(H) Refer to Minimums	Apt Elev 1450' FS: RWY <b>1450'</b> RWY <b>1470'</b>
<b>MISSED APCH:</b> Climb straight ahead. At 2300' turn left track 125°. When crossing R-205 ZUE turn left to intercept LLZ frontbeam outbound to VIBAX. Climb to 6000'.				
Alt Set: hPa	Rwy Elev: 53 hPa	Trans level: By ATC	Trans alt: 7000'	MSA THR 29



Flight Simulator-OPS		CIRCLE-TO-LAND		Gnd speed-Kts						
STRAIGHT-IN LANDING RWY 29 Missed apch climb gradient min 5.0% up to 3700'		Not authorized south of airport		Descent Gradient 4.50°						
DA(H): CAT A: <b>1831'</b> (381') CAT B: <b>1851'</b> (401') CAT C: <b>1870'</b> (420') CAT D: <b>1887'</b> (437')		MDA(H) VIS								
A	RVR 800m	Max Kts	90	3300' (1850')	1500m					
B			120	3300' (1850')	1600m					
C			140	3300' (1850')	2400m					
D	RVR 1500m		165	3300' (1850')	3600m					