

# LSZB/BRN

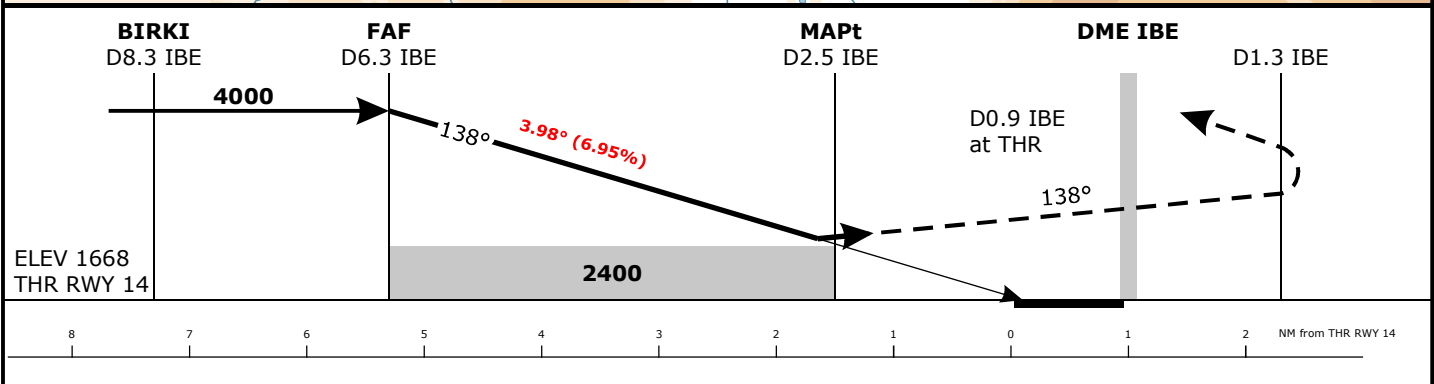
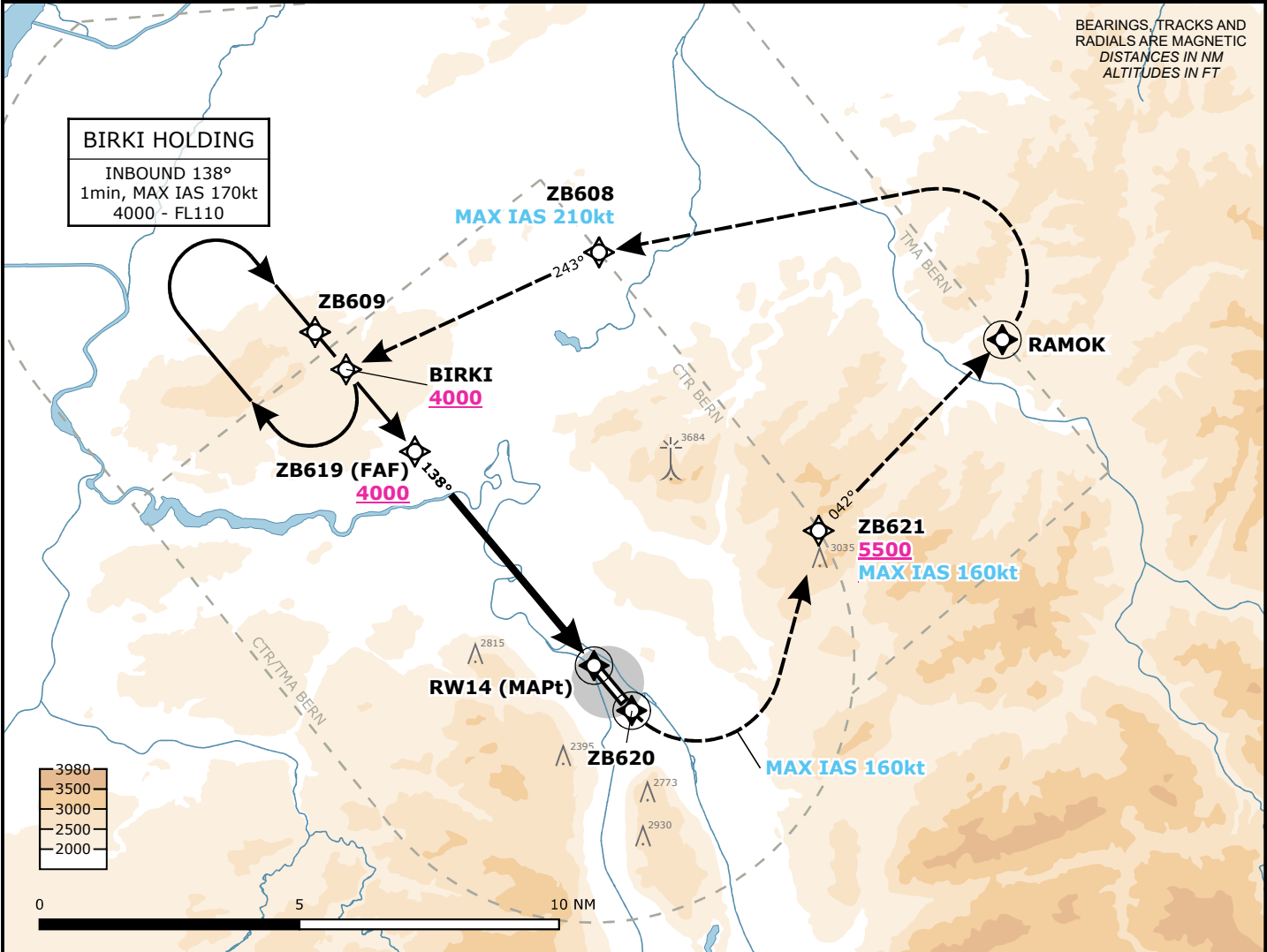
## BERN BELP, SWITZERLAND

APCH CHART NO. 03  
Revision 10 AUG 23

RNP  
**RWY 14**

Frequencies		Missed Approach		MSA LSZB ARP	
	134.600	133.050	Climb straight ahead. Initial climb clearance <b>6000</b> .		Outer Circle: 25 NM
Swiss Radar	133.900	135.150	At ZB620 turn left (MAX IAS 160kt).		Inner Circle: 10 NM
	128.050	135.675	Proceed via ZB621 to RAMOK. Cross ZB621 at <b>5500</b> or above.		
Bern Arrival	127.325	-	At RAMOK turn left (MAX IAS 210kt).		
Bern Tower	121.025	-	Proceed via ZB608 to BIRKI and hold.		
Bern ATIS	125.125	-	AD ELEV 1675ft	TRANS LVL by ATC	TRANS ALT 6000

Valid for flight simulation use only - do not use for real life navigation



Minima				
	CAT A	CAT B	CAT C	Vis/RVR
MDA (H) LNAV		2570 (902)		2400m
DA (H) LPV CAT I		2168 (500)		1800m

Changes: Complete revision