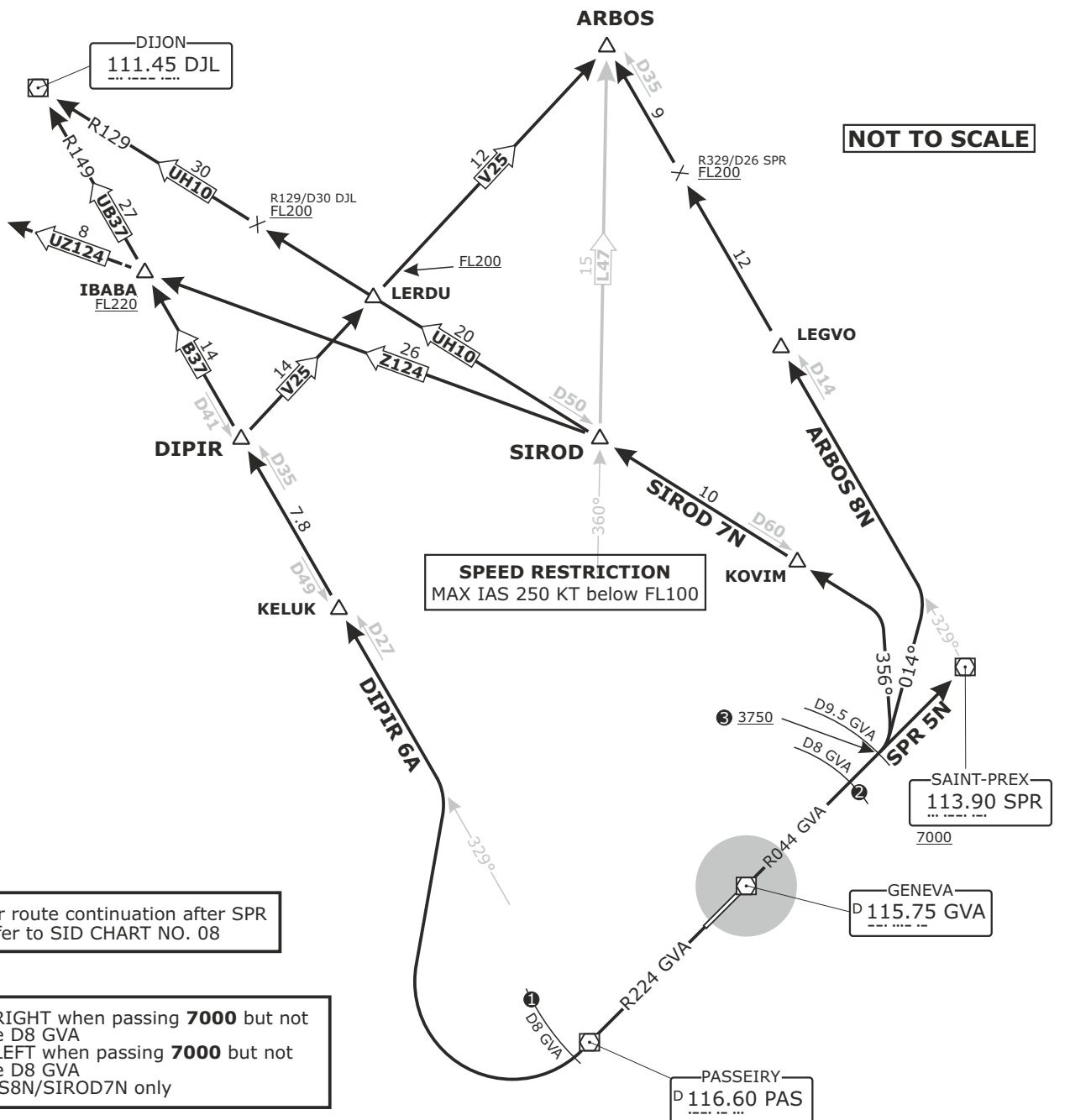
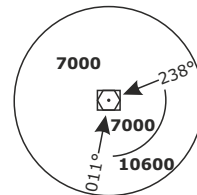


**DIPIR**  
NON-RNAV DEPARTURE  
RWY 22

Frequencies			
Swiss Radar		134.600	134.850
		128.905	124.225
		134.030	-
Geneva Arrival		136.255	-
Geneva Departure		119.530	-
Geneva ATIS		135.580	-
AD ELEV 1411ft	TRANS ALT 7000		

**MSA GVA**  
Outer Circle: 25 NM  
Inner Circle: 10 NM



For route continuation after SPR  
refer to SID CHART NO. 08

- ① Turn RIGHT when passing **7000** but not before D8 GVA
- ② Turn LEFT when passing **7000** but not before D8 GVA
- ③ ARBOS8N/SIROD7N only

DISTANCES IN NM  
ALTITUDES IN FT

Altitude restrictions see graphical chart

Initial climb clearance **FL90**

SID	RWY	ROUTING
ARBOS 8N	04	Climb on R044 GVA. When passing <b>7000</b> but not before D8 GVA, turn LEFT onto track 014°. Intercept R329 from SPR. Proceed via LEGVO to ARBOS.
DIPIR 6A	22	Climb on R224 GVA. When passing <b>7000</b> but not before D8 GVA, turn RIGHT to intercept R329 from PAS (R149 to DJL). Proceed via KELUK to DIPIR.
SIROD 7N	04	Climb on R044 GVA. When passing <b>7000</b> but not before D8 GVA, turn LEFT onto track 356°. Intercept R129 to DJL. Proceed via KOVIM to SIROD.
SPR 5N		Climb on R044 GVA. Proceed to SPR.