

LSGG/GVA

GENEVA, SWITZERLAND

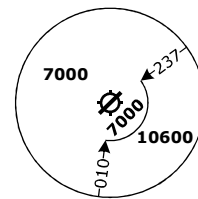
SID CHART NO. 22-11
Revision 31 OCT 24

ACFT CAT A/B/C RNAV 1 SID

RWY 22 **SOSAL 1J**

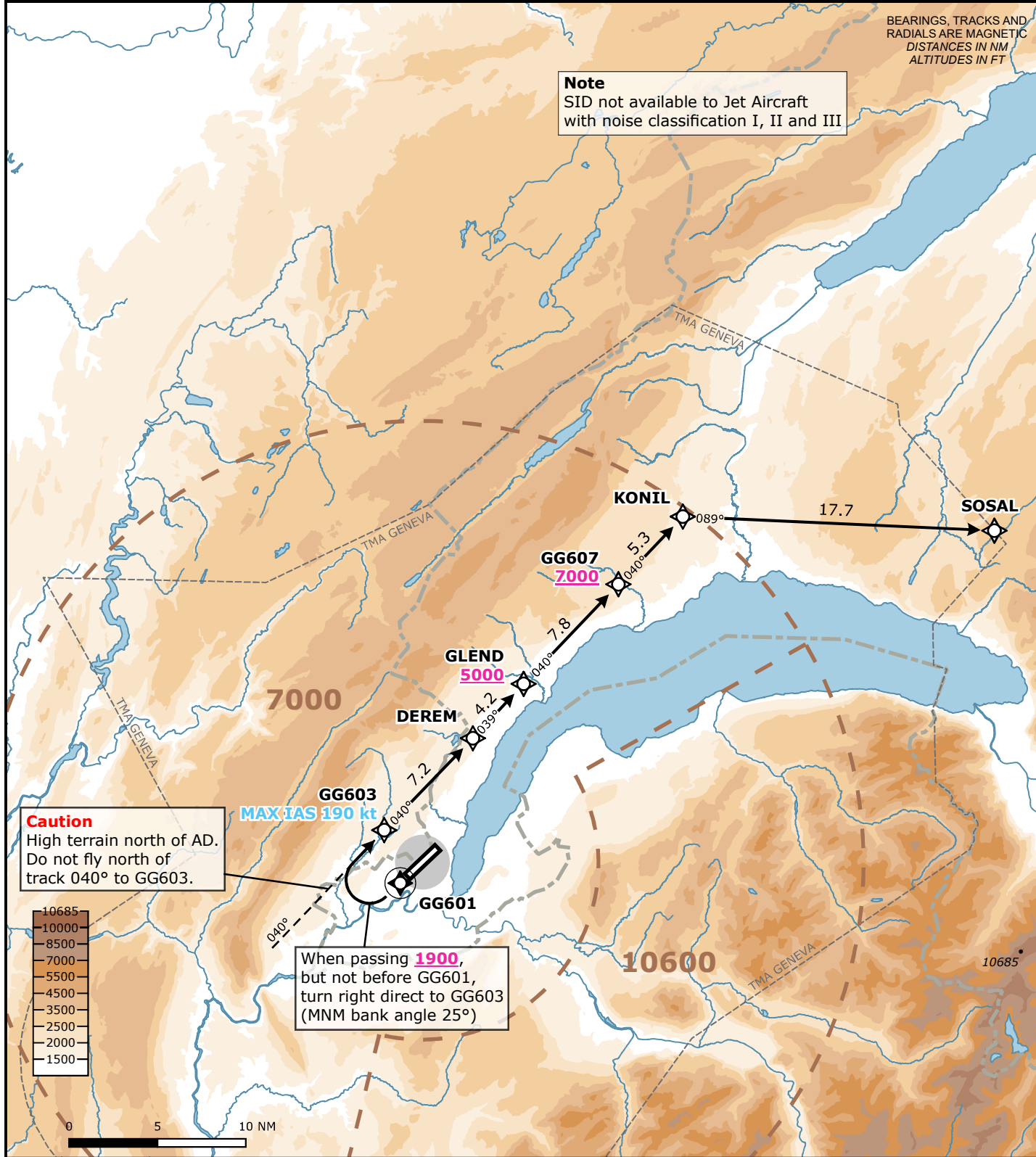
Frequencies		Navigation Specification		
Swiss Radar	135.015	134.850	RNAV 1	
	128.905	124.225	GNSS or DME/DME/IRU required.	
	134.030	-		
Geneva Arrival	136.255	-	Initial climb clearance FL090	
Geneva Departure	119.530	-		
Geneva ATIS	135.580	-		
		AD ELEV 1411 ft	TRANS LVL by ATC	TRANS ALT 7000 ft

MSA LSGG ARP
Outer Circle: 25 NM
Inner Circle: 10 NM



BEARINGS, TRACKS AND RADIALS ARE MAGNETIC
DISTANCES IN NM
ALTITUDES IN FT

Note
SID not available to Jet Aircraft with noise classification I, II and III



Caution
High terrain north of AD.
Do not fly north of track 040° to GG603.

When passing 1900, but not before GG601, turn right direct to GG603 (MNM bank angle 25°)

RWY	SID	Lateral Routing	Vertical Routing
22	SOSAL 1J	Climb on track 223°. When passing 1900 ft, but not before GG601, turn right direct to GG603 (MAX IAS 190kt, MNM bank angle 25°). Proceed via DEREM, GLEND, GG607, KONIL to SOSAL.	Initial climb clearance FL090. Cross GLEND at 5000 ft or above and GG607 at 7000 ft or above.

Valid for flight simulation use only - do not use for real life navigation

Changes: Complete revision