

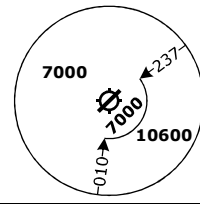
LSGG/GVA

GENEVA, SWITZERLAND

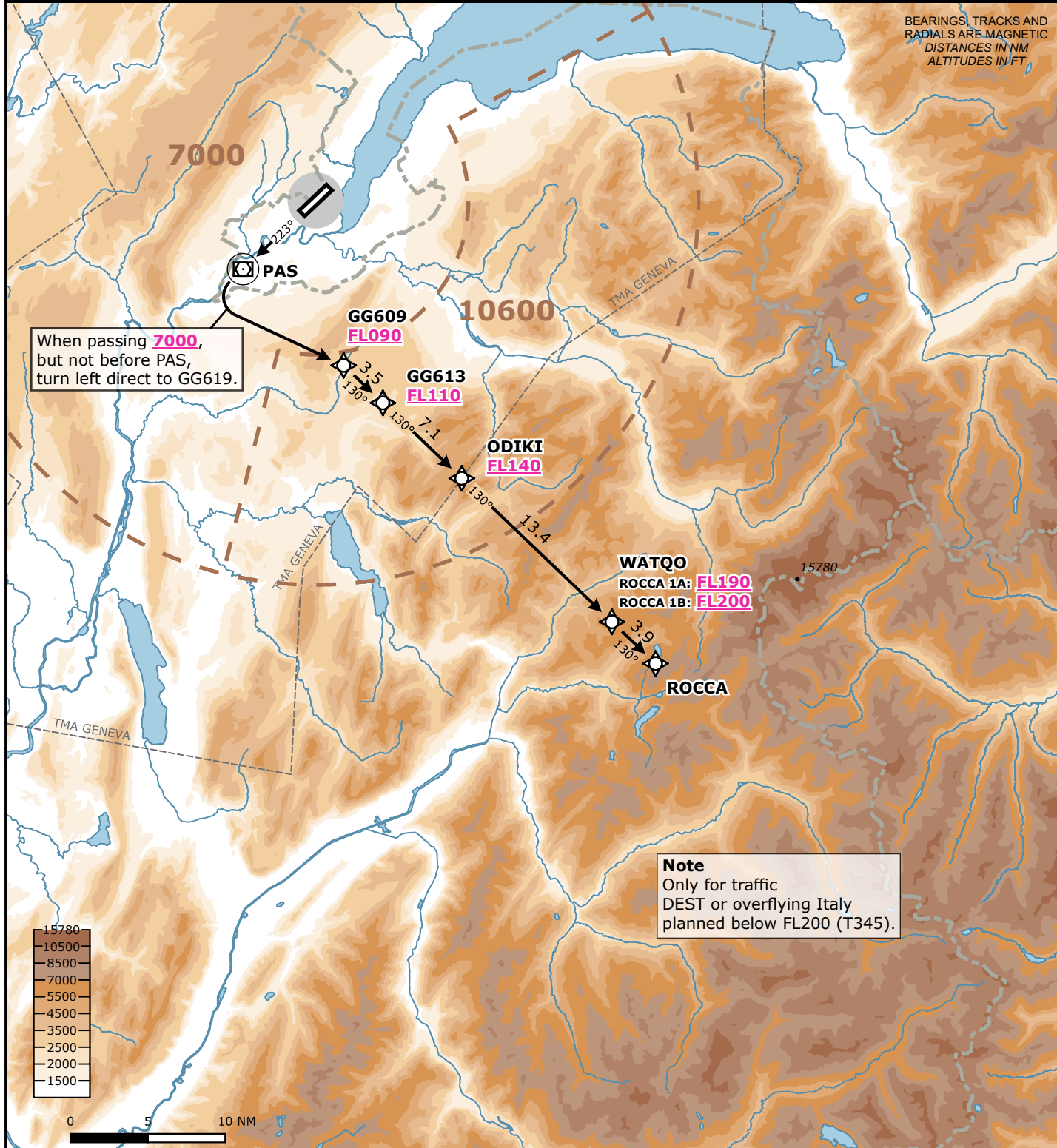
SID CHART NO. 22-08
Revision 31 OCT 24

RNAV 1 SID
RWY 22 ROCCA 1A/1B

Frequencies		Navigation Specification		MSA LSGG ARP Outer Circle: 25 NM Inner Circle: 10 NM
	135.015 134.850	RNAV 1		
Swiss Radar	128.905 124.225	GNSS or DME/DME/IRU required.		
	134.030 -	Initial climb clearance FL090		
Geneva Arrival	136.255 -			
Geneva Departure	119.530 -			
Geneva ATIS	135.580 -			
		AD ELEV 1411 ft	TRANS LVL by ATC	TRANS ALT 7000 ft



Valid for flight simulation use only - do not use for real life navigation



RWY	SID	Lateral Routing	Vertical Routing
22	ROCCA 1A	Climb on track 223°. When passing 7000 ft, but not before PAS, turn left direct to GG609.	Initial climb clearance FL090. Cross GG609 at FL090 or above, GG613 at FL110 or above, ODIKI at FL140 or above, and WATQO at FL190 or above.
	ROCCA 1B	Proceed via GG613, ODIKI, WATQO to ROCCA.	Initial climb clearance FL090. Cross GG609 at FL090 or above, GG613 at FL110 or above, ODIKI at FL140 or above, and WATQO at FL200 or above.

Changes: Complete revision