

# LSGG/GVA

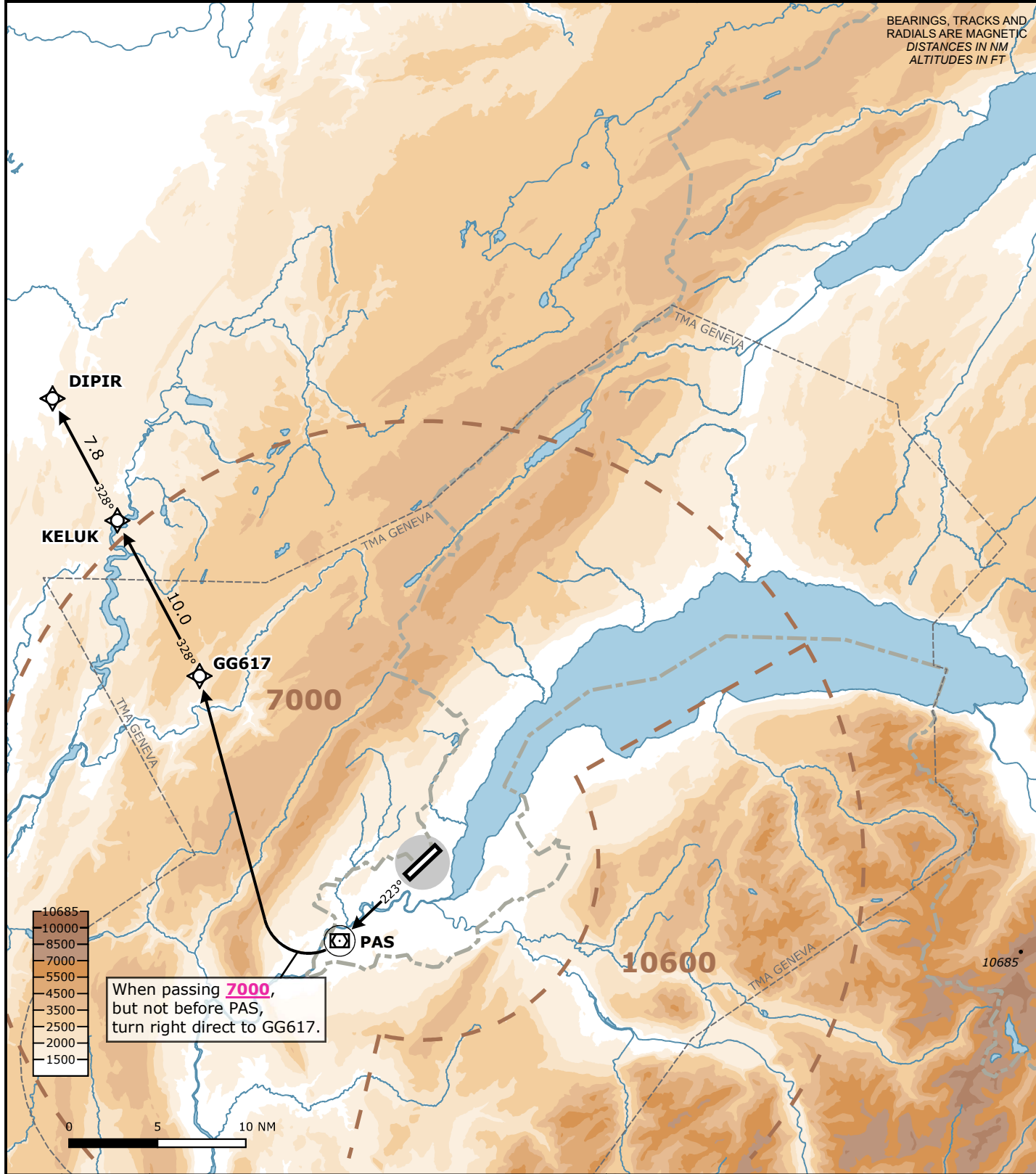
## GENEVA, SWITZERLAND

SID CHART NO. 22-04  
Revision 31 OCT 24

RNAV 1 SID  
**RWY 22 DIPIR 1A**

Frequencies		Navigation Specification		MSA LSGG ARP	
Swiss Radar	135.015	134.850	RNAV 1		Outer Circle: 25 NM
	128.905	124.225	GNSS or DME/DME/IRU required.		Inner Circle: 10 NM
	134.030	-	<b>Initial climb clearance FL090</b>		
Geneva Arrival	136.255	-			
Geneva Departure	119.530	-			
Geneva ATIS	135.580	-			
		AD ELEV 1411 ft	TRANS LVL by ATC	TRANS ALT 7000 ft	

Valid for flight simulation use only - do not use for real life navigation



RWY	SID	Lateral Routing	Vertical Routing
22	DIPIR 1A	Climb on track 223°. When passing 7000 ft, but not before PAS, turn right direct to GG617. Proceed via KELUK to DIPIR.	Initial climb clearance FL090.

Changes: Complete revision