

LSGG/GVA

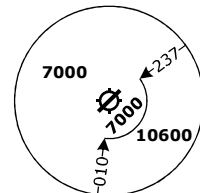
GENEVA, SWITZERLAND

SID CHART NO. 22-01
Revision 31 OCT 24

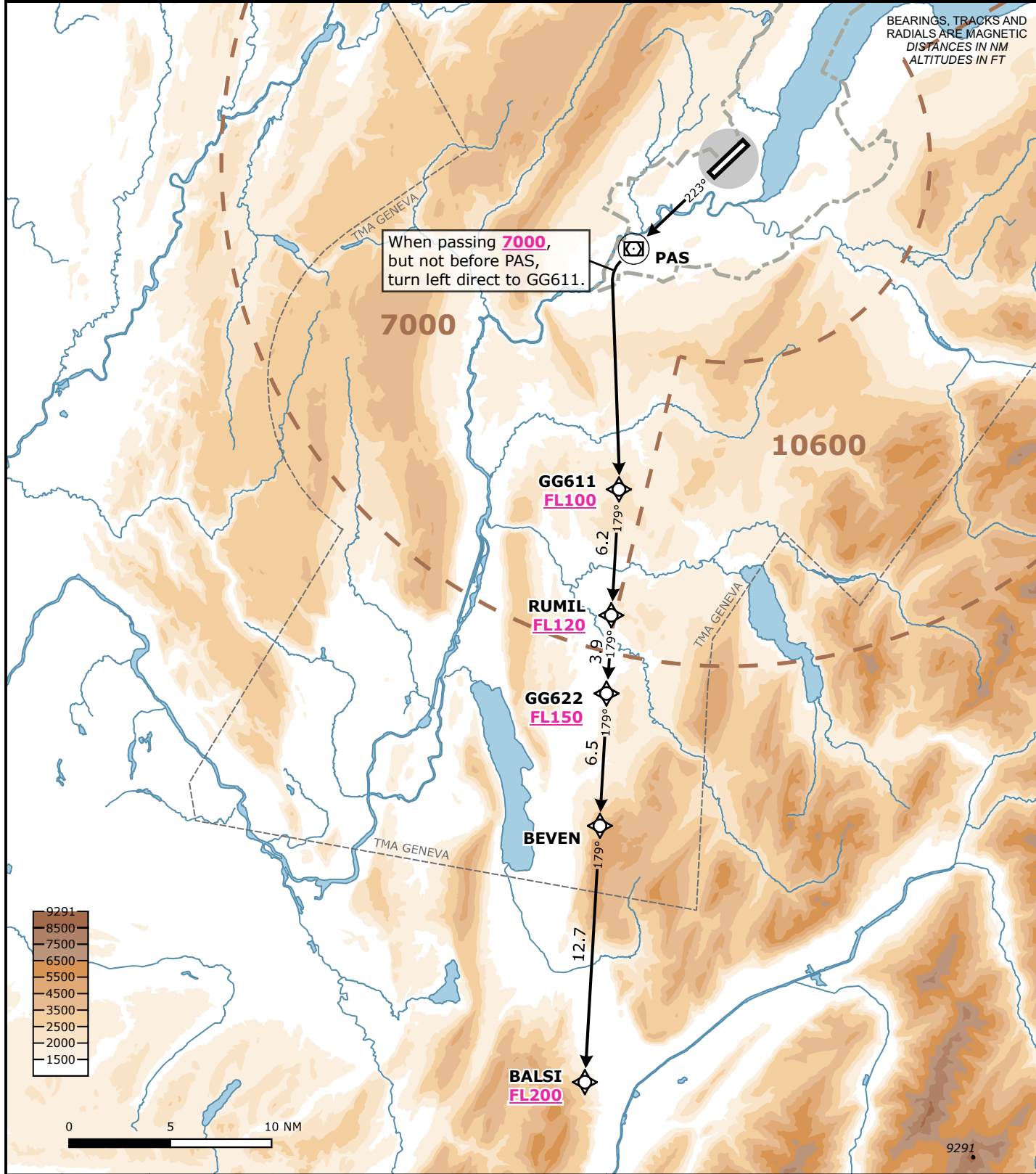
RNAV 1 SID

RWY 22 BALS I 1A

Frequencies		Navigation Specification			MSA LSGG ARP Outer Circle: 25 NM Inner Circle: 10 NM
Swiss Radar	135.015	134.850	RNAV 1		
	128.905	124.225	GNSS or DME/DME/IRU required.		
	134.030	-			
Geneva Arrival	136.255	-	Initial climb clearance FL090		
Geneva Departure	119.530	-			
Geneva ATIS	135.580	-			
		AD ELEV 1411 ft	TRANS LVL by ATC	TRANS ALT 7000 ft	



Valid for flight simulation use only - do not use for real life navigation



BEARINGS, TRACKS AND RADIALS ARE MAGNETIC
DISTANCES IN NM
ALTITUDES IN FT

RWY	SID	Lateral Routing	Vertical Routing
22	BALS I 1A	Climb on track 223°. When passing 7000 ft, but not before PAS, turn left direct to GG611. Proceed via RUMIL, GG622, BEVEN to BALS I.	Initial climb clearance FL090. Cross GG611 at FL100 or above, RUMIL at FL120 or above, GG622 at FL150 or above, and BALS I at FL200 or above.

Changes: Complete revision