

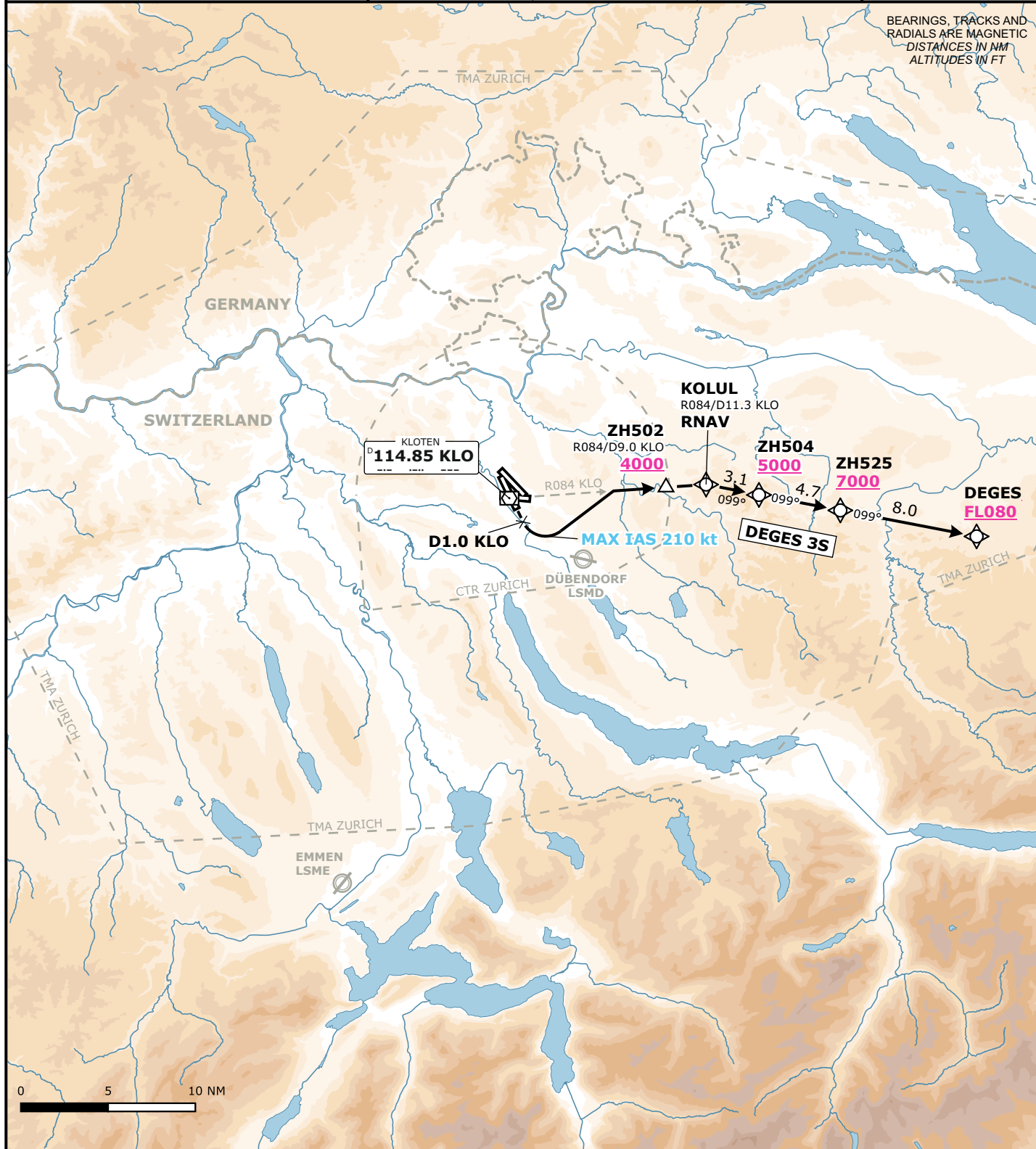
LSZH/ZRH

ZURICH, SWITZERLAND

SID CHART NO. 16-1
Revision 25 JAN 24

SID
RWY 16

Frequencies		Remarks	MSA LSZH ARP				
	135.015 133.050	RNAV 1 applicable when passing KOLUL	Outer Circle: 25 NM				
Swiss Radar	128.050 133.905		Inner Circle: 17 NM				
	135.680 -						
Zurich Arrival	135.230 130.560	Initial climb clearance 5000 ft					
Zurich Departure	125.955 -						
Zurich ATIS	125.730 -					AD ELEV 1417 ft	TRANS LVL by ATC



RWY	SID	Lateral Routing	Vertical Routing
16	DEGES 3S	Climb straight ahead. Turn left at 2000 ft but not before D1 KLO (MAX IAS 210 kt). Intercept R084 KLO. Proceed via ZH502, KOLUL, ZH504, ZH525 to DEGES.	Initial climb clearance 5000 ft. Cross ZH502 at 4000 ft or above, ZH504 at 5000 ft or above, ZH525 at 7000 ft or above, DEGES at FLO80 or above.

Valid for flight simulation use only - do not use for real life navigation

Changes: Complete revision