

LSZH/ZRH

ZURICH, SWITZERLAND

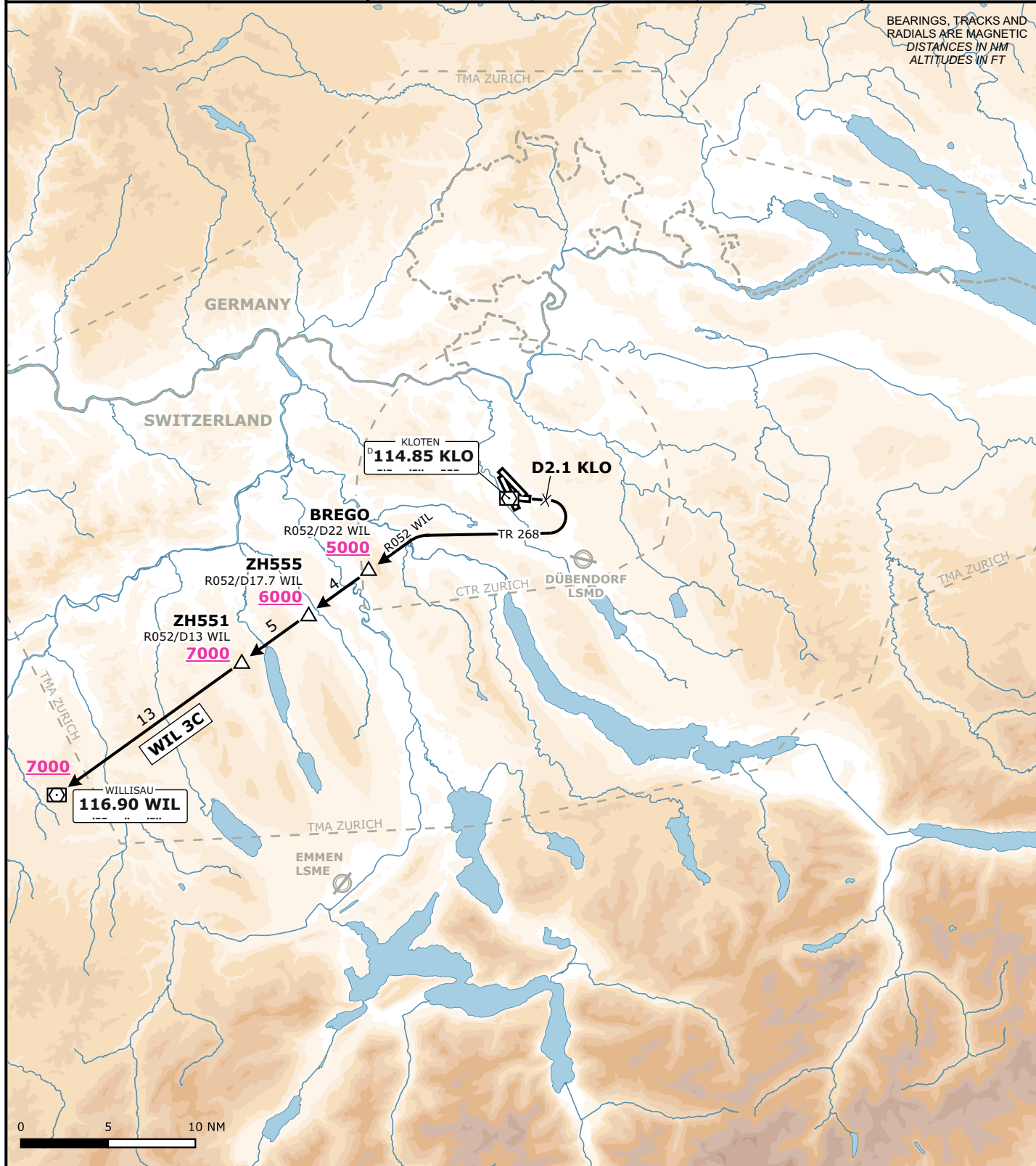
SID CHART NO. 10-3
Revision 25 JAN 24

NON-RNAV SID

RWY 10

| Frequencies | | Remarks | MSA LSZH ARP | | | | | |
|------------------|------------------|--|--|--|--|-------------------|------------------|-------------------|
| | 135.015 133.050 | The departure is allocated to propeller aircraft only and requires visual conditions as specified. Visual Conditions for departure: SID is allocated only if the lowest cloud layer is reported above 3000 ft AGL. | Outer Circle: 25 NM Inner Circle: 17 NM | | | | | |
| Swiss Radar | 128.050 133.905 | | | | | | | |
| | 135.680 - | | | | | | | |
| Zurich Arrival | 135.230 130.560 | Initial climb clearance 5000 ft | <table border="1"> <tr> <td>AD ELEV 1417 ft</td> <td>TRANS LVL by ATC</td> <td>TRANS ALT 7000 ft</td> </tr> </table> | | | AD ELEV 1417 ft | TRANS LVL by ATC | TRANS ALT 7000 ft |
| AD ELEV 1417 ft | TRANS LVL by ATC | | | | | TRANS ALT 7000 ft | | |
| Zurich Departure | 125.955 - | | | | | | | |
| Zurich ATIS | 125.730 - | | | | | | | |

Valid for flight simulation use only - do not use for real life navigation



| RWY | SID | Lateral Routing | Vertical Routing |
|-----|--------|--|--|
| 10 | WIL 3C | Climb straight ahead. Short visual right turn, but not before D2.1 KLO or when instructed by ATC. Turn within 2NM south of RWY 10. Establish TR268 to intercept R052 WIL. Proceed via BREGO, ZH555, ZH551 to WIL. | INITIAL CLIMB CLEARANCE 5000 ft. Maintain visual ground contact to 4400 ft. Cross BREGO at 5000 ft or above, ZH555 at 6000 ft or above, ZH551 at 7000 ft or above. |

Changes: Complete revision