

LSZH/ZRH

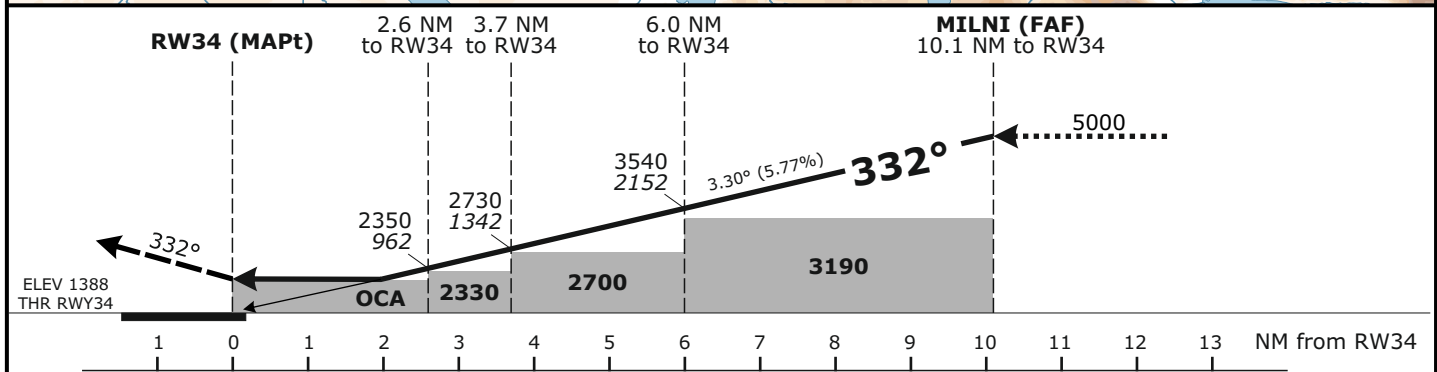
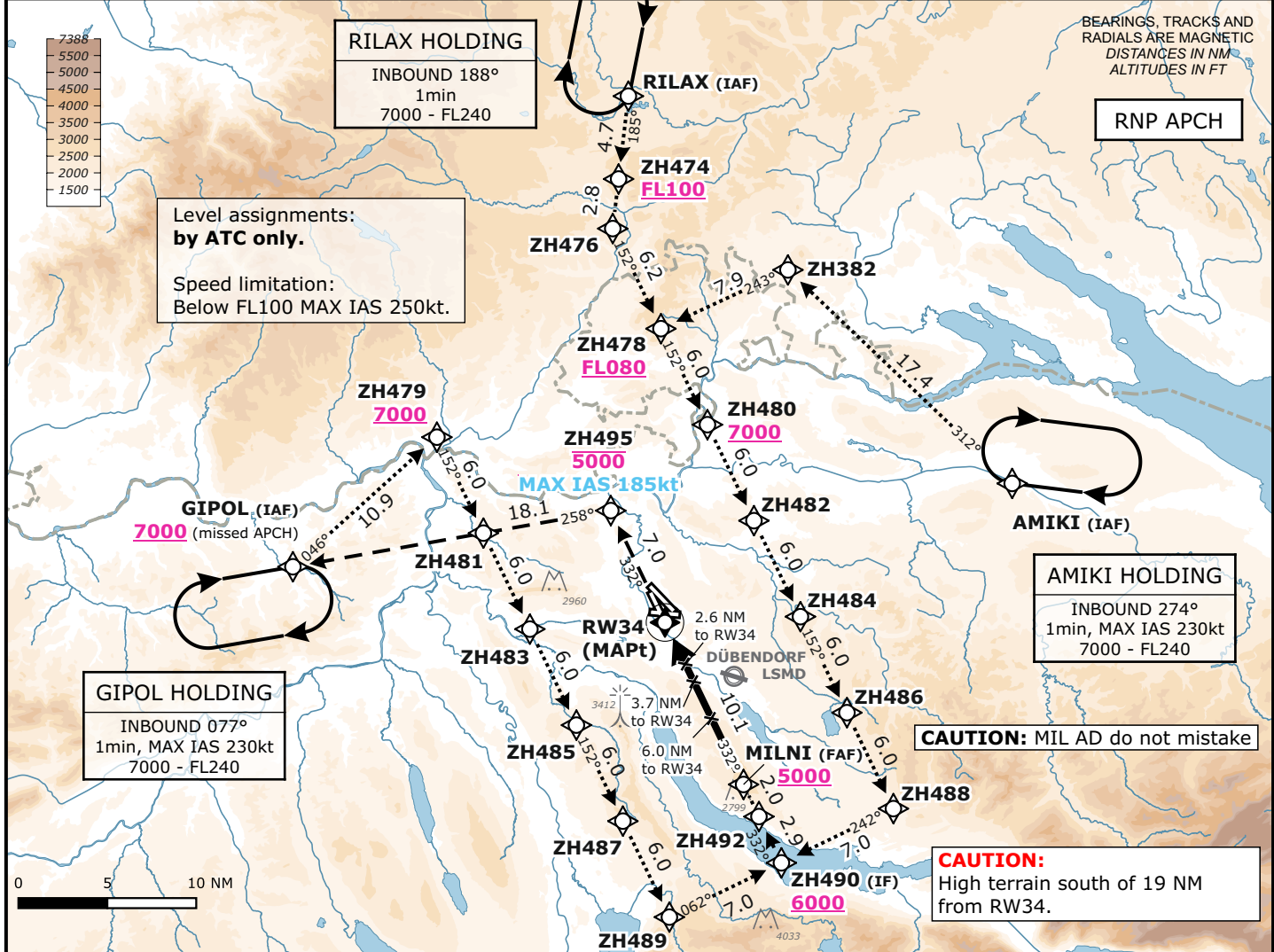
ZURICH, SWITZERLAND

APCH CHART NO. 34-4
Revision 25 JAN 24

RNP
RWY 34

Frequencies		Missed Approach		MSA LSZH ARP	
Swiss Radar	135.015 133.050	Initial climb clearance to 5000 . Climb straight ahead to ZH495. Proceed to GIPOL. MAX IAS 185kt to ZH495. Cross ZH495 at or below 5000 . Cross GIPOL at or above 7000 .	Outer Circle: 25 NM		
Zurich Arrival	135.230 130.560		Inner Circle: 17 NM		
Zurich Final	125.330 -				
Zurich Tower	118.100 120.230				
Zurich Apron	121.755 121.855				
Zurich ATIS	125.730 -				
		AD ELEV 1417ft	TRANS LVL by ATC	TRANS ALT 7000	

Valid for flight simulation use only - do not use for real life navigation



Minima							
	CAT A	CAT B	CAT C	CAT D	CAT D _L	Visibility	Ceiling
MDA (H) LNAV	1990 (610)					750m	300
DA (H) LNAV/VNAV	1789 (401)	1799 (411)	1812 (424)	1821 (433)			
DA (H) LPV CAT I	1588 (200)						

Changes: New Chart