

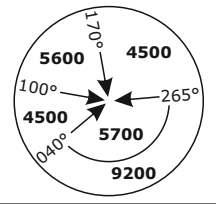
LSZH/ZRH

ZURICH, SWITZERLAND

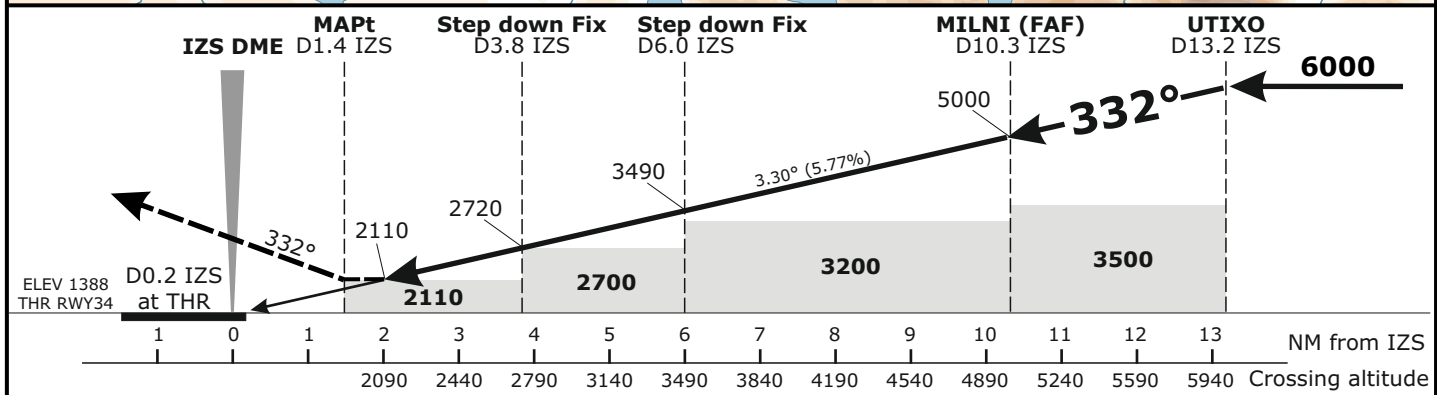
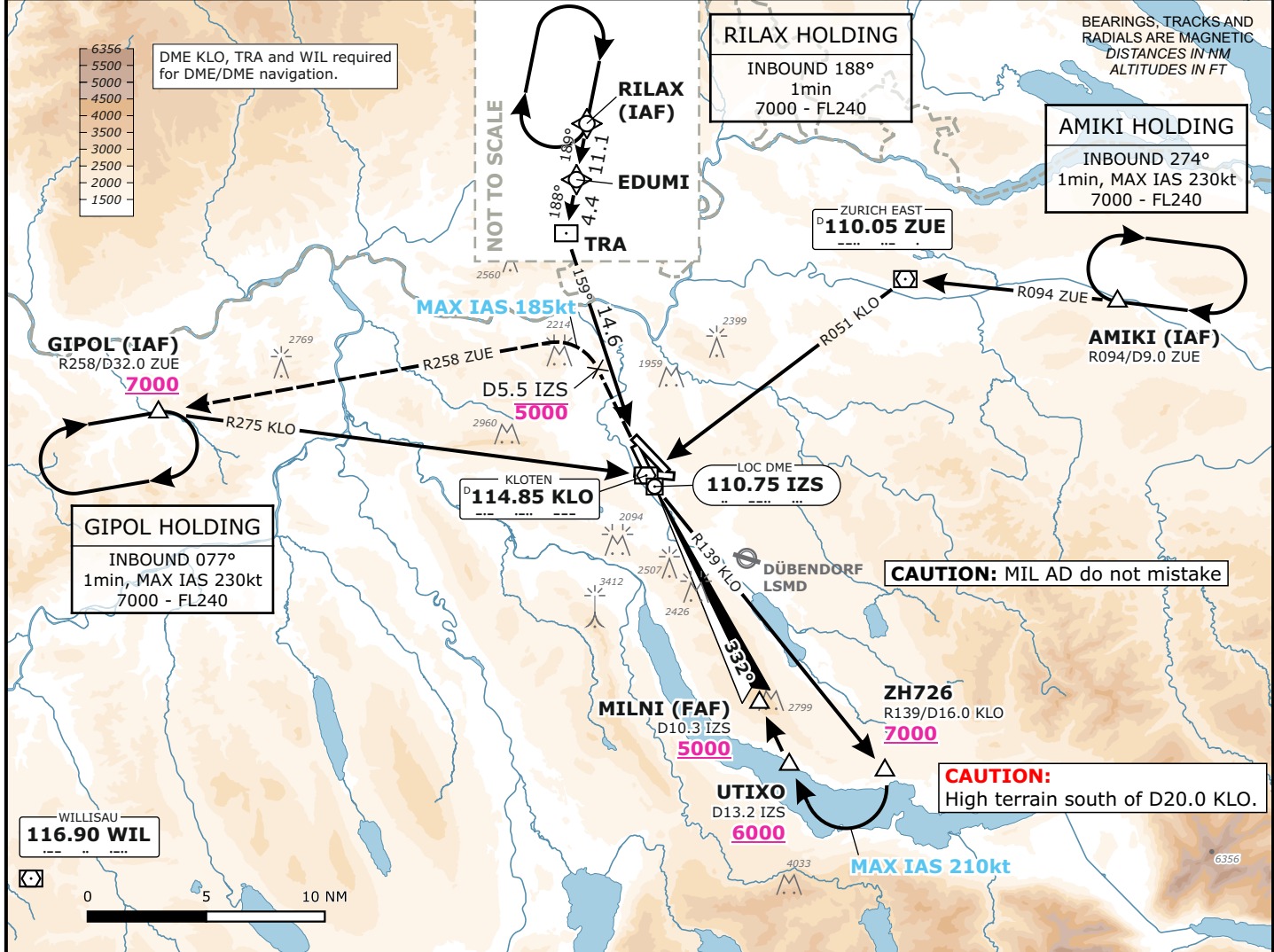
APCH CHART NO. 34-3
Revision 25 JAN 24

LOC
RWY 34

| Frequencies | | Missed Approach | | MSA LSZH ARP | |
|----------------|-----------------|---|------------------|---------------------|--|
| Swiss Radar | 135.015 133.050 | Climb straight ahead. Initial climb to 5000 . At D5.5 IZS past the station turn LEFT (MAX IAS 185 kt during turn). Intercept R258 from ZUE. Continue climb to 7000 . Proceed to GIPOL. | | Outer Circle: 25 NM | |
| Zurich Arrival | 128.050 133.905 | | | Inner Circle: 17 NM | |
| Zurich Final | 135.230 130.560 | | | | |
| Zurich Tower | 125.330 - | | | | |
| Zurich Apron | 118.100 120.230 | | | | |
| Zurich ATIS | 121.755 121.855 | | | | |
| | | AD ELEV 1417ft | TRANS LVL by ATC | TRANS ALT 7000 | |



Valid for flight simulation use only - do not use for real life navigation



| Minima | | | | | |
|------------|-------|-------|-------|------------|---------|
| MDA (H) | | | | Visibility | Ceiling |
| CAT A | CAT B | CAT C | CAT D | | |
| 2110 (730) | | | | 2500m | 800 |

Changes: 8.33kHz frequencies