

LSZH/ZRH

ZURICH, SWITZERLAND

APCH CHART NO. 28-3
Revision 25 JAN 24

LOC
RWY 28

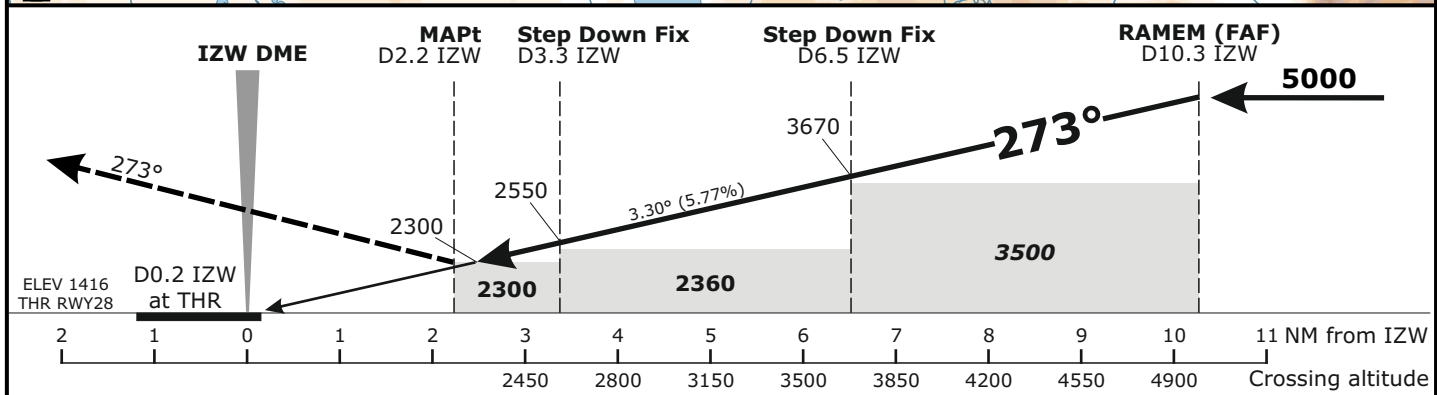
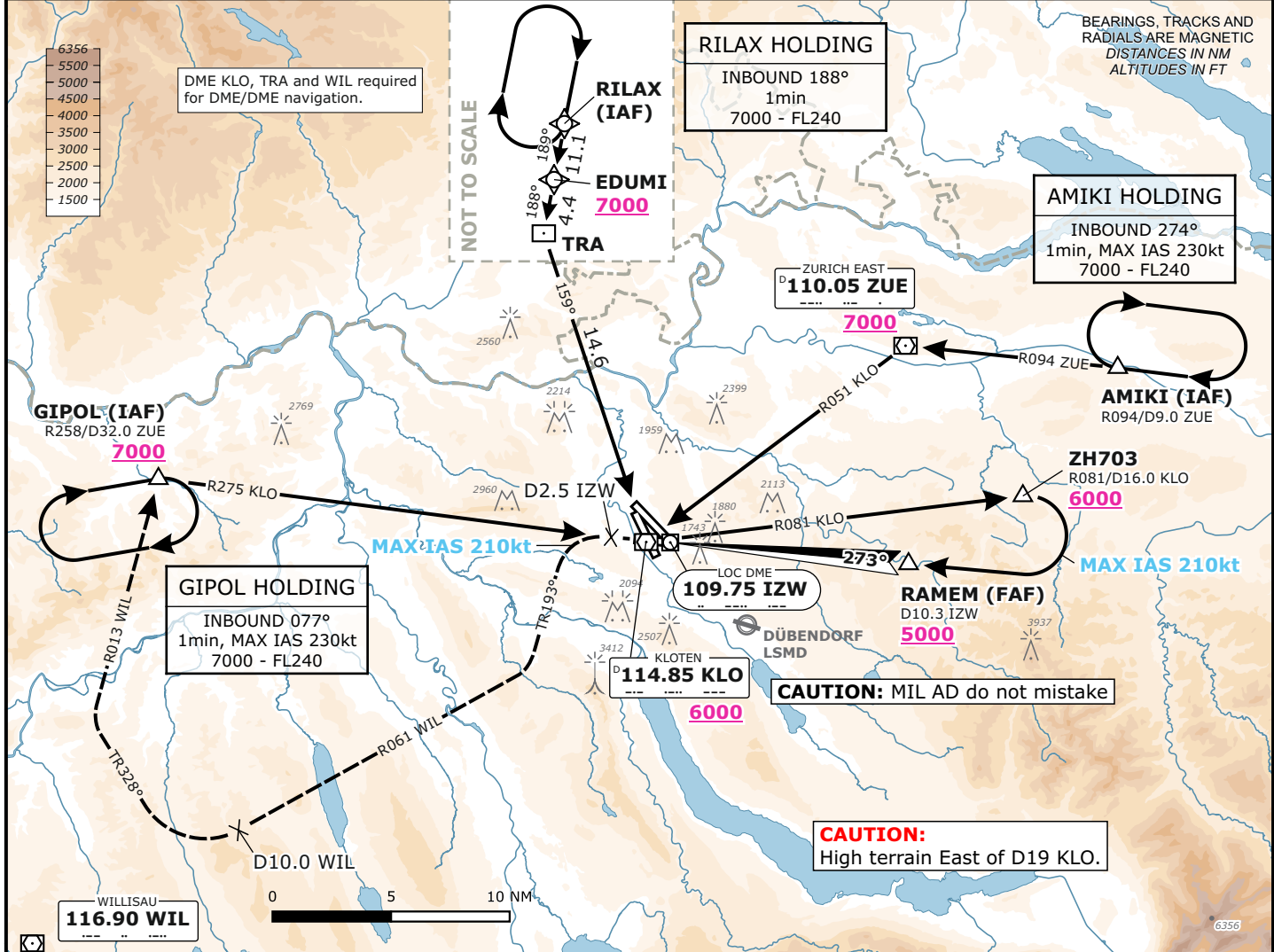
Frequencies		
Swiss Radar	135.015	133.050
	128.050	133.905
Zurich Arrival	135.230	130.560
Zurich Final	125.330	-
Zurich Tower	118.100	120.230
Zurich Apron	121.755	121.855
Zurich ATIS	125.730	-

Missed Approach		
Climb straight ahead. Initial climb to 4000 . At D2.5 IZW past the station turn LEFT (MAX IAS 210 KT) onto track 193°, then continue climb to 7000 . Intercept R061 to WIL. At D10 WIL to the station turn RIGHT onto track 328°, intercept R013 from WIL. Proceed to GIPOL.		
AD ELEV 1417ft	TRANS LVL by ATC	TRANS ALT 7000

MSA LSZH ARP
Outer Circle: 25 NM
Inner Circle: 17 NM

BEARINGS, TRACKS AND RADIALS ARE MAGNETIC
DISTANCES IN NM
ALTITUDES IN FT

Valid for flight simulation use only - do not use for real life navigation



Minima				Remarks	
MDA (H)				Visibility	Ceiling
CAT A	CAT B	CAT C	CAT D		
2300 (890)				4300m	1200
Do not confuse RWY 32 with RWY 28.					

Changes: 8.33kHz frequencies