

LSZH/ZRH

ZURICH, SWITZERLAND

APCH CHART NO. 16-3
Revision 25 JAN 24

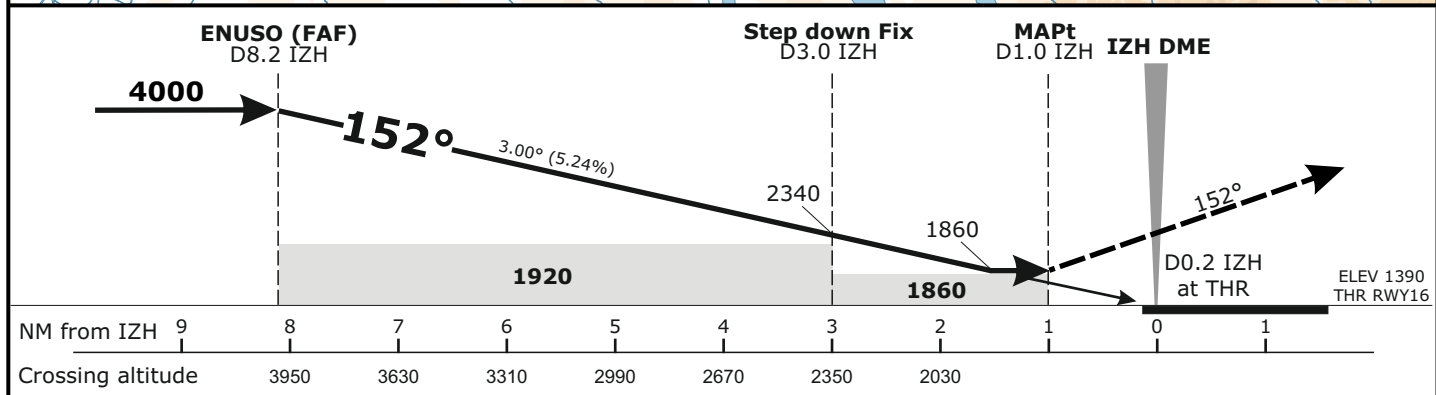
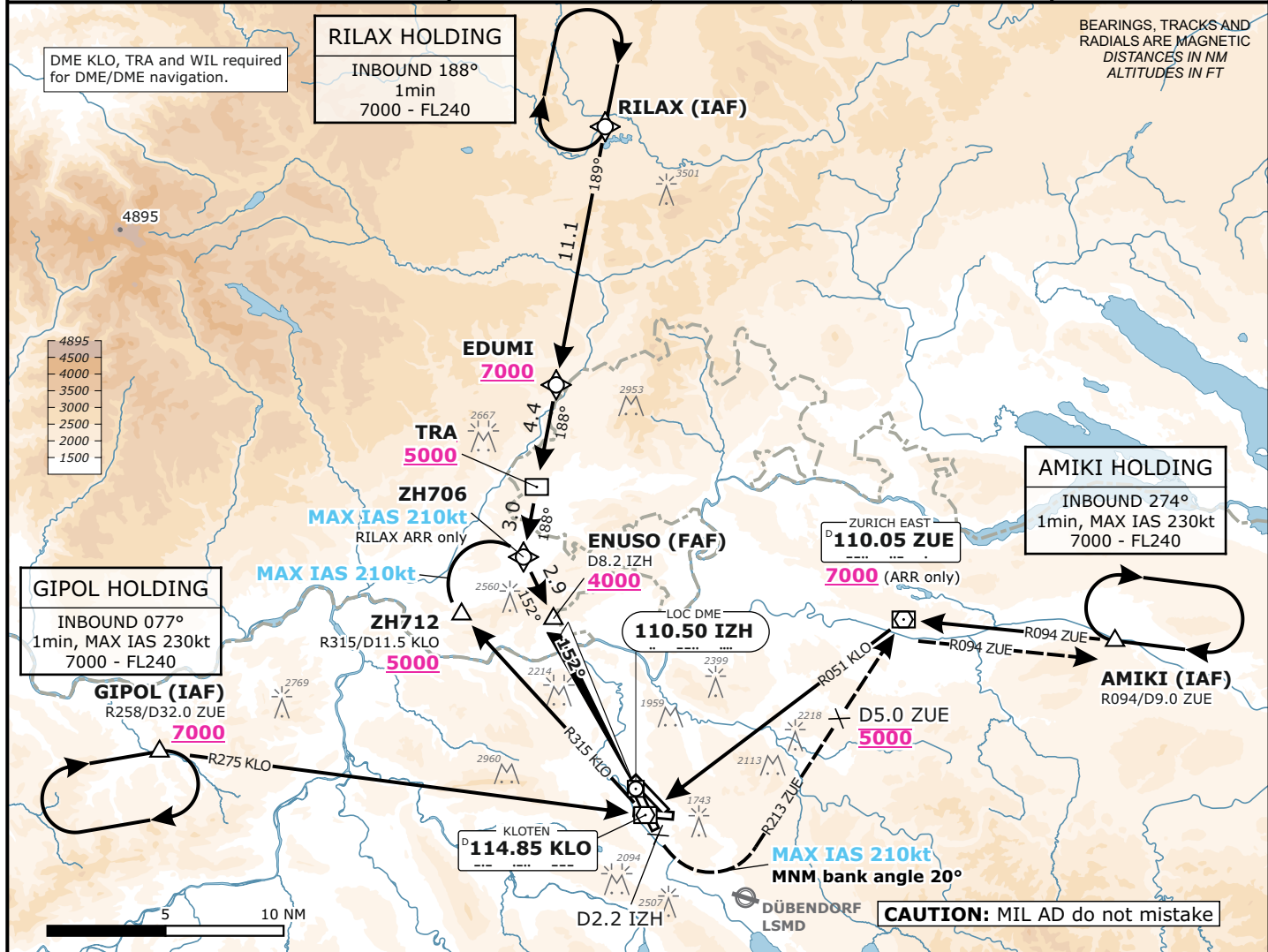
LOC
RWY 16

Frequencies		
Swiss Radar	135.015	133.050
Zurich Arrival	128.050	133.905
Zurich Final	125.330	-
Zurich Tower	118.100	120.230
Zurich Apron	121.755	121.855
Zurich ATIS	125.730	-

Missed Approach		
Climb straight ahead. Initial climb to 5000 .		
At D2.2 IZH past the station turn LEFT (MAX IAS 210kt, MNM bank angle 20°) to intercept R213 to ZUE.		
At D5.0 ZUE to the station continue climb to 7000 .		
Proceed to ZUE. Cross ZUE at MNM 6000 and intercept R094 from ZUE. Proceed to AMIKI.		
AD ELEV 1417ft	TRANS LVL by ATC	TRANS ALT 7000

MSA LSZH ARP
Outer Circle: 25 NM
Inner Circle: 17 NM

Valid for flight simulation use only - do not use for real life navigation



Minima				
MDA (H)				RVR
CAT A	CAT B	CAT C	CAT D	
1860 (470)				1500m

Changes: 8.33kHz frequencies