

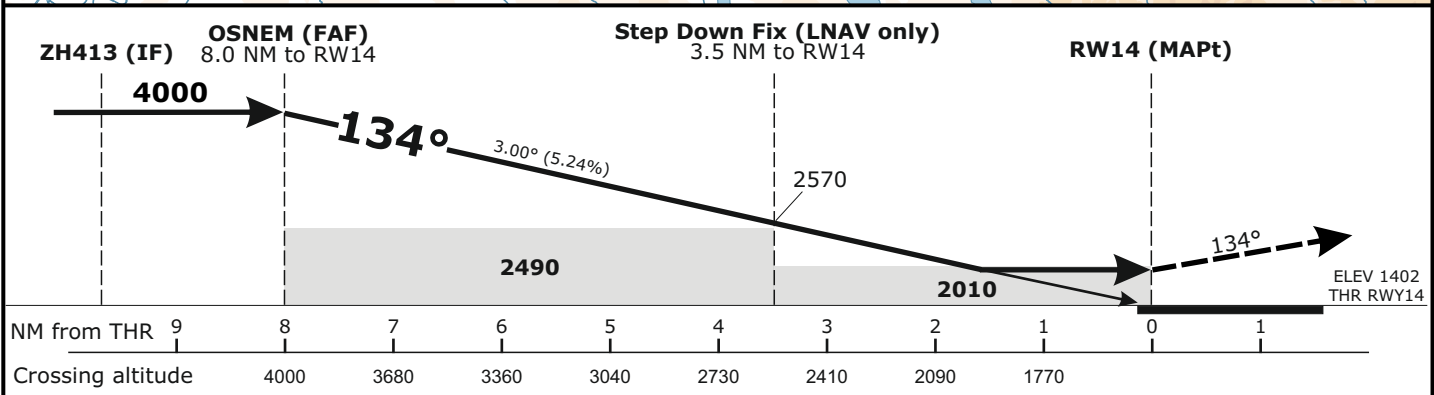
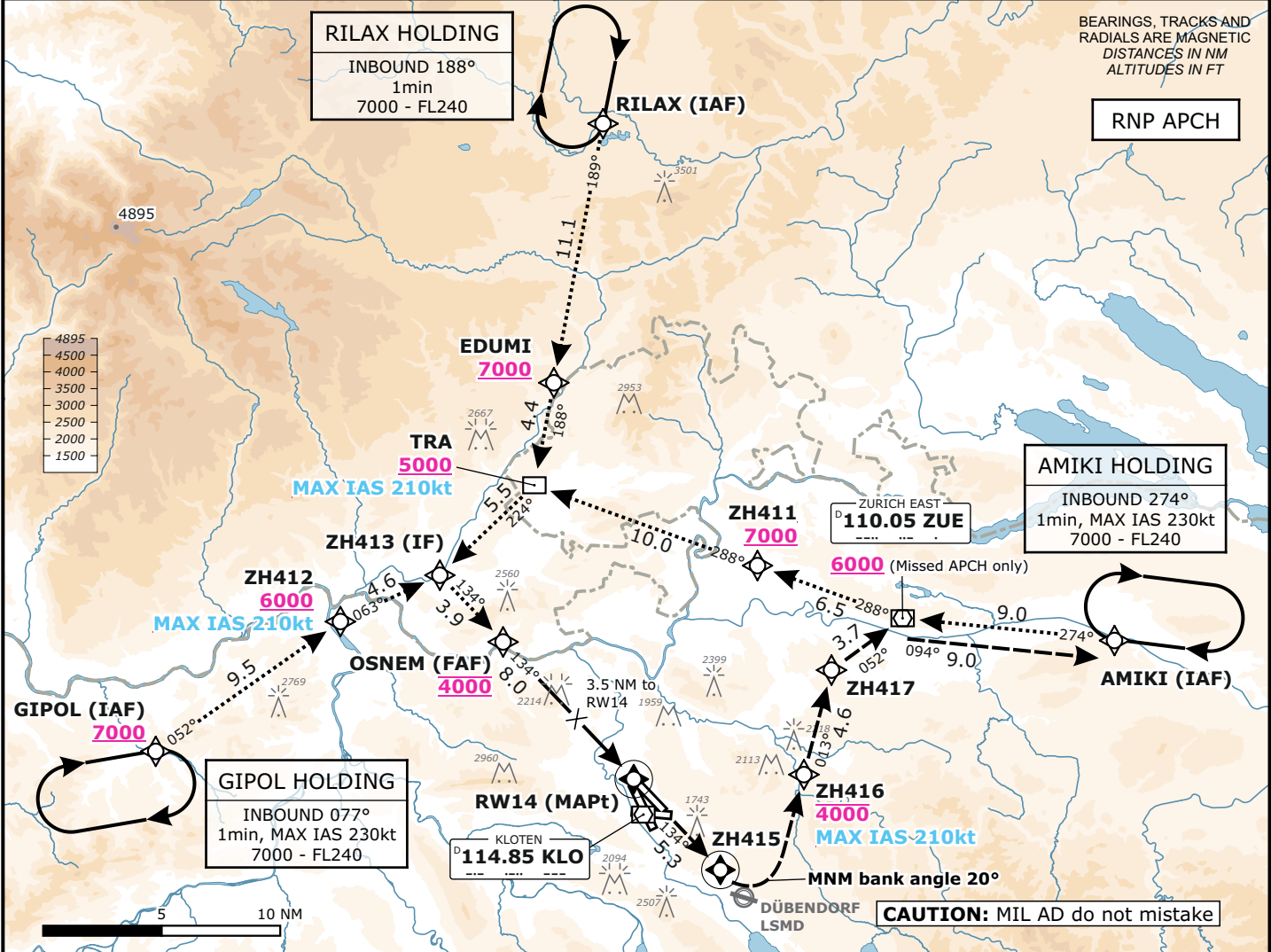
LSZH/ZRH

ZURICH, SWITZERLAND

APCH CHART NO. 14-4
Revision 25 JAN 24

RNP
RWY 14

Frequencies		Missed Approach		MSA LSZH ARP	
Swiss Radar	135.015 133.050	Climb straight ahead to ZH415. Initial climb to 4000 . At ZH415 turn LEFT to ZH416. At ZH416 proceed via ZH417, ZUE to AMIKI. Cross ZH416 at or below 4000 . After passing ZH416 continue climb to 7000 . Cross ZUE at or above 6000.		Outer Circle: 25 NM Inner Circle: 17 NM	
Zurich Arrival	128.050 133.905				
Zurich Final	135.230 130.560				
Zurich Tower	125.330 -				
Zurich Apron	118.100 120.230				
Zurich ATIS	121.755 121.855	AD ELEV 1417ft	TRANS LVL by ATC	TRANS ALT 7000	



Minima	Remark				
	CAT A	CAT B	CAT C	CAT D	RVR
MDA (H) LNAV	2010 (610)				2100m
DA (H) LNAV/VNAV	1880 (480)	1890 (490)	1910 (510)	1940 (540)	1700m
DA (H) LPV CAT I	1602 (200)				550m

Flight crew's responsibility to accept «swing over» to RWY 16, if proposed by ATC.

Valid for flight simulation use only - do not use for real life navigation

Changes: 8.33kHz frequencies