

LSZH/ZRH

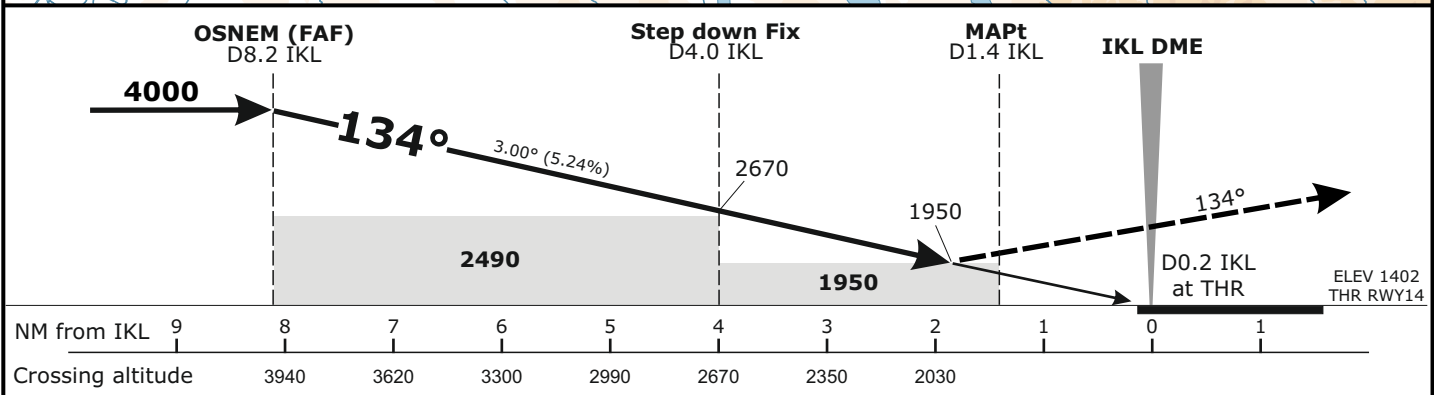
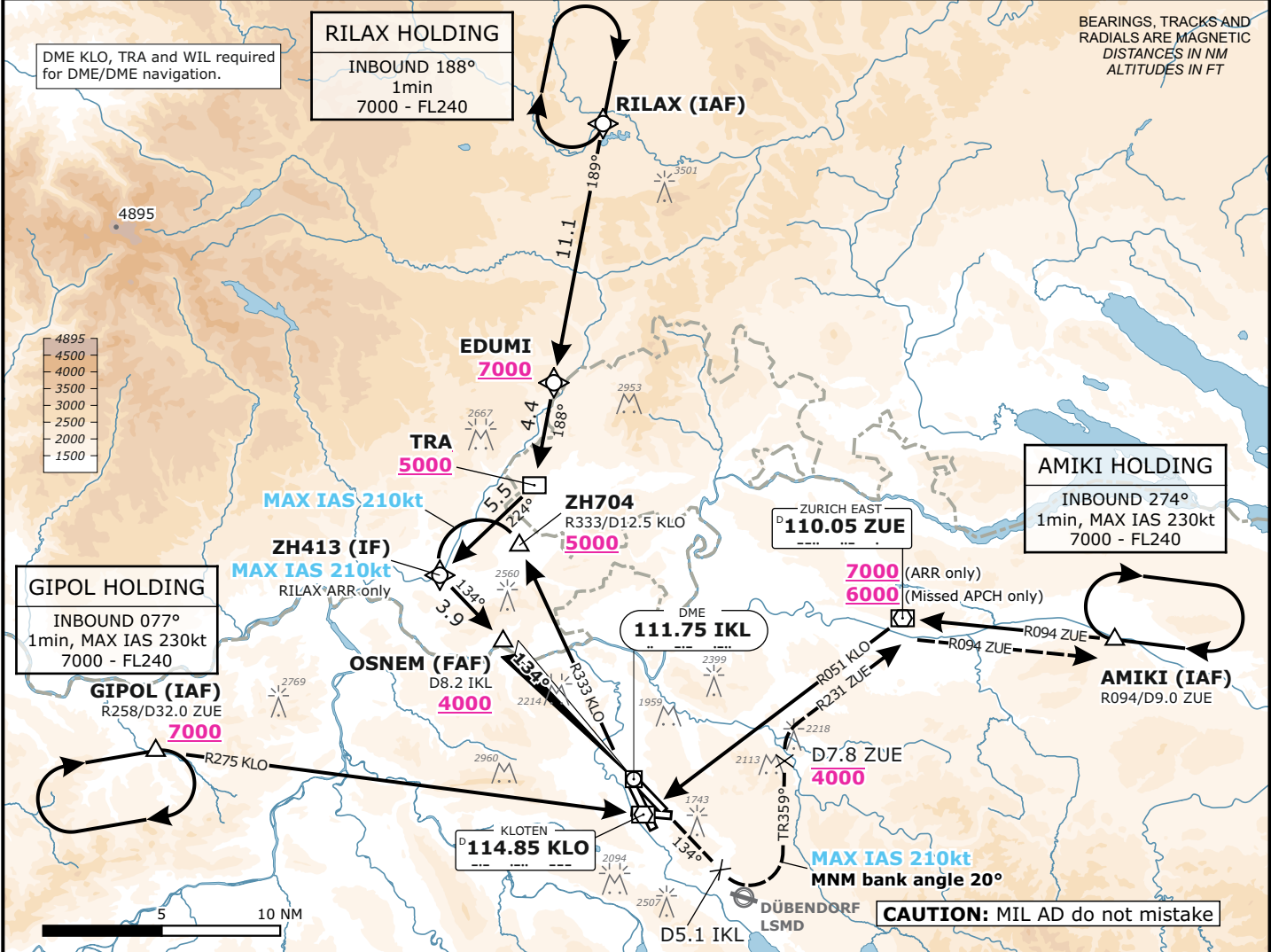
ZURICH, SWITZERLAND

APCH CHART NO. 14-3
Revision 25 JAN 24

LOC
RWY 14

Frequencies		Missed Approach		MSA LSZH ARP	
Swiss Radar	135.015 133.050	Climb straight ahead. Initial climb to 4000 . At D5.1 IKL past the station turn LEFT (MAX IAS 210 KT) onto track 359° to intercept R231 to ZUE. At D7.8 ZUE continue climb to 7000 . Proceed to ZUE. Cross ZUE at MNM 6000 and intercept R094 from ZUE. Proceed to AMIKI.		Outer Circle: 25 NM Inner Circle: 17 NM	
Zurich Arrival	135.230 130.560				
Zurich Final	125.330 -				
Zurich Tower	118.100 120.230				
Zurich Apron	121.755 121.855				
Zurich ATIS	125.730 -	AD ELEV 1417ft	TRANS LVL by ATC	TRANS ALT 7000	

Valid for flight simulation use only - do not use for real life navigation



Minima				RVR	Remark
CAT A	CAT B	CAT C	CAT D		
MDA (H)				1800m	Flight crew's responsibility to accept «swing over» to RWY 16, if proposed by ATC.
1950 (550)					

Changes: 8.33kHz frequencies