

LSGG/GVA

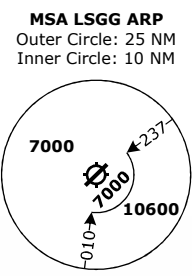
GENEVA, SWITZERLAND

APCH CHART NO. 02
Revision 31 OCT 24

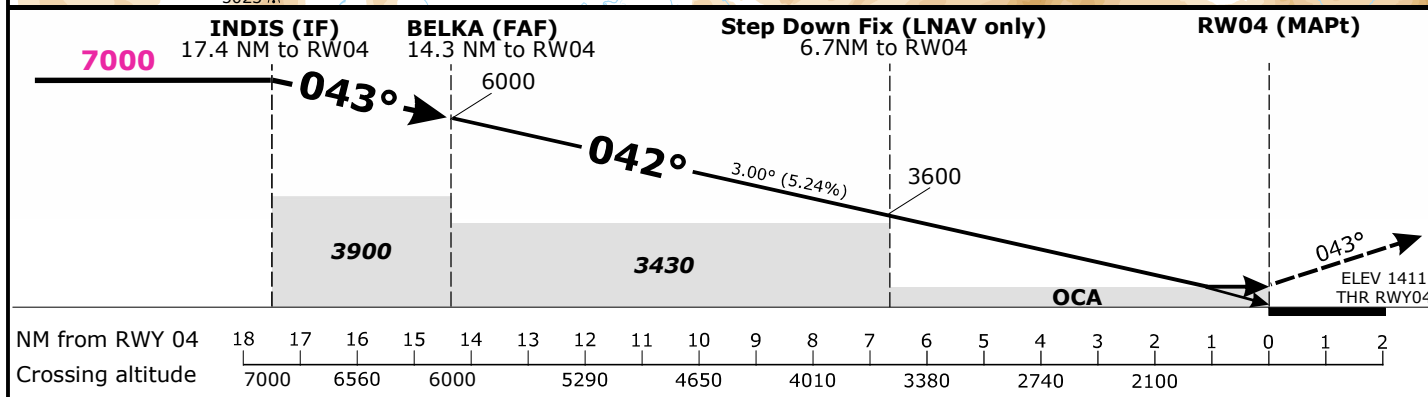
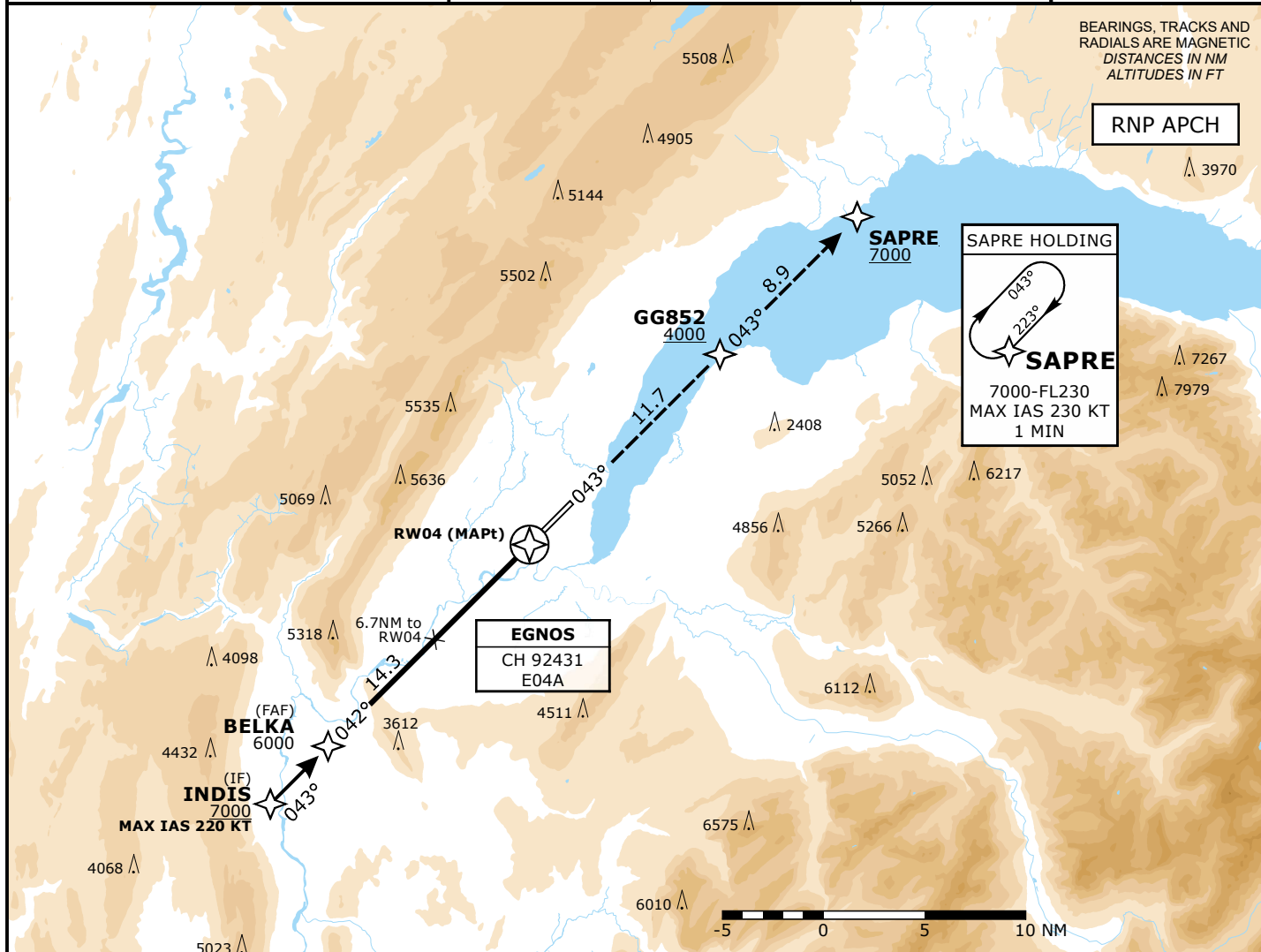
RNP
RWY 04

Frequencies		
Swiss Radar	135.015	134.850
	124.225	128.905
Geneva Arrival	136.255	-
Geneva Final	120.305	-
Geneva Tower	118.700	-
Geneva Apron	121.855	-
Geneva ATIS	135.580	-

Missed Approach		
Climb to 7000 .		
Climb on track 043° via GG852 to SAPRE.		
Cross GG852 at 4000 or above.		
AD ELEV 1411ft	TRANS LVL by ATC	TRANS ALT 7000



Valid for flight simulation use only - do not use for real life



Minima					
	CAT A	CAT B	CAT C	CAT D	RVR
MDA (H) LNAV	1860 (449)				1400m
DA (H) LNAV/VNAV	1744 (333)	1753 (342)	1763 (352)	1773 (362)	900m
DA (H) LPV CAT I	1611 (200)		1617 (206)	1627 (216)	550m

Changes: completely revised