

LSZA/LUG

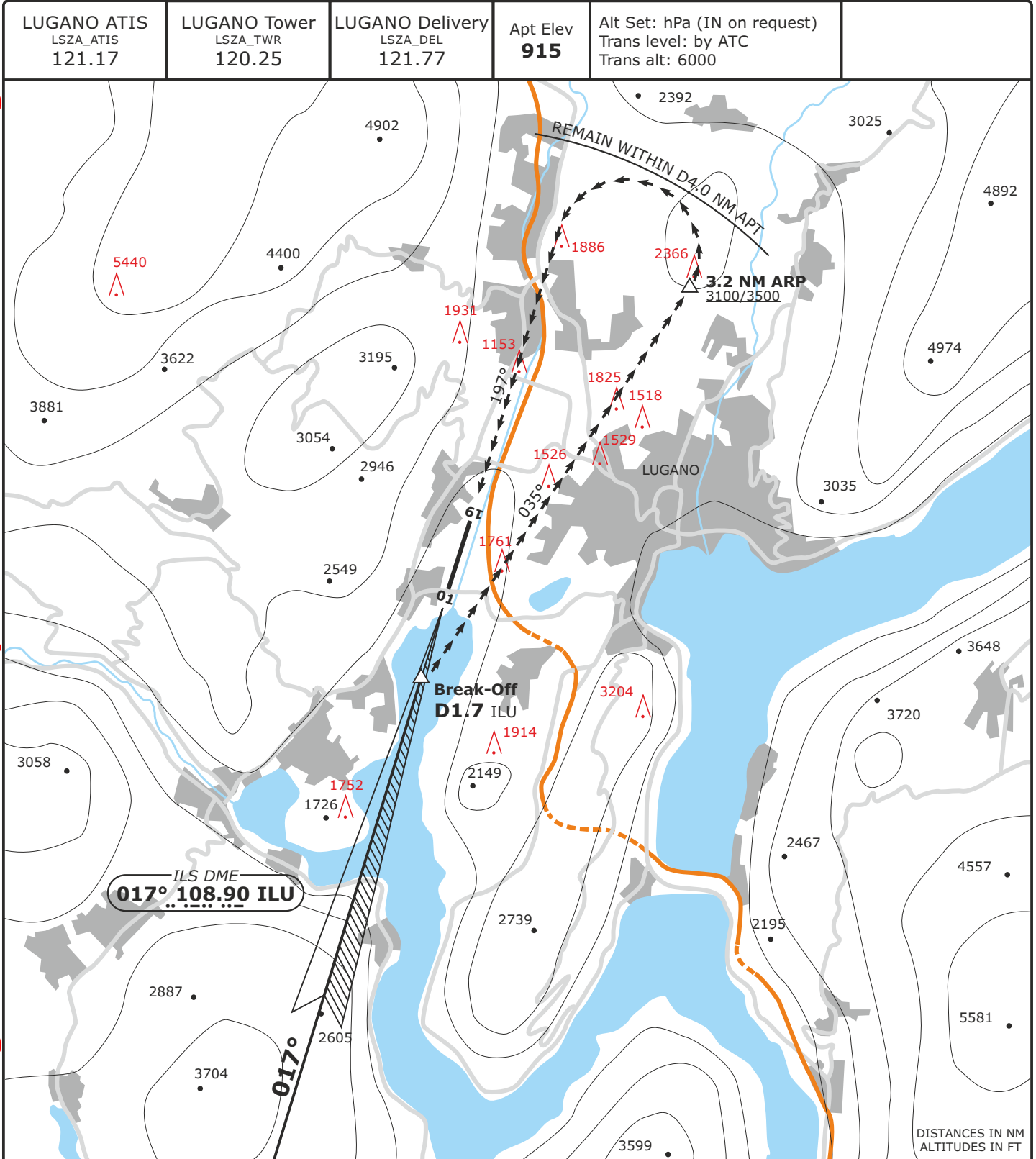
LUGANO, SWITZERLAND

APP CHART NO.4
Revision 23 APR 20

FOXTROT **CIRCLING**

RWY 19

Valid for flight simulation use only - do not use for real life navigation



Flight Simulator OPS

CIRCLE-TO-LAND RWY 19 for ACFT CAT A/B

If visual contact is established at D2.2 ILU, continue straight ahead. At D1.7 ILU turn RIGHT onto track 033°. If ceiling and visibility permit, maintain 3500 for noise abatement purposes until 3.2 NM APT. At 3.2 NM ARP start LEFT turn onto base. Descent to be arranged to maintain clean configuration as long as possible, safety and ATC requirement considered.

WARNING: Disregard PAPI RWY 01 information.
Use PAPI RWY 19 information only within 2 NM from threshold.
PAPI RWY 19 has a glideslope of 4.17°.
Circling WEST of runway centerline prohibited.
Procedure authorized DAY only.

Obstacle clearance altitude (height)	3100 (2185)	3500 ⓘ (2585)
Visibility requirement	DAY only 5000m	
Ceiling requirement	3100 AAL	

ⓘ If ceiling and visibility permit

CHANGES: Frequency