

LSZA/LUG

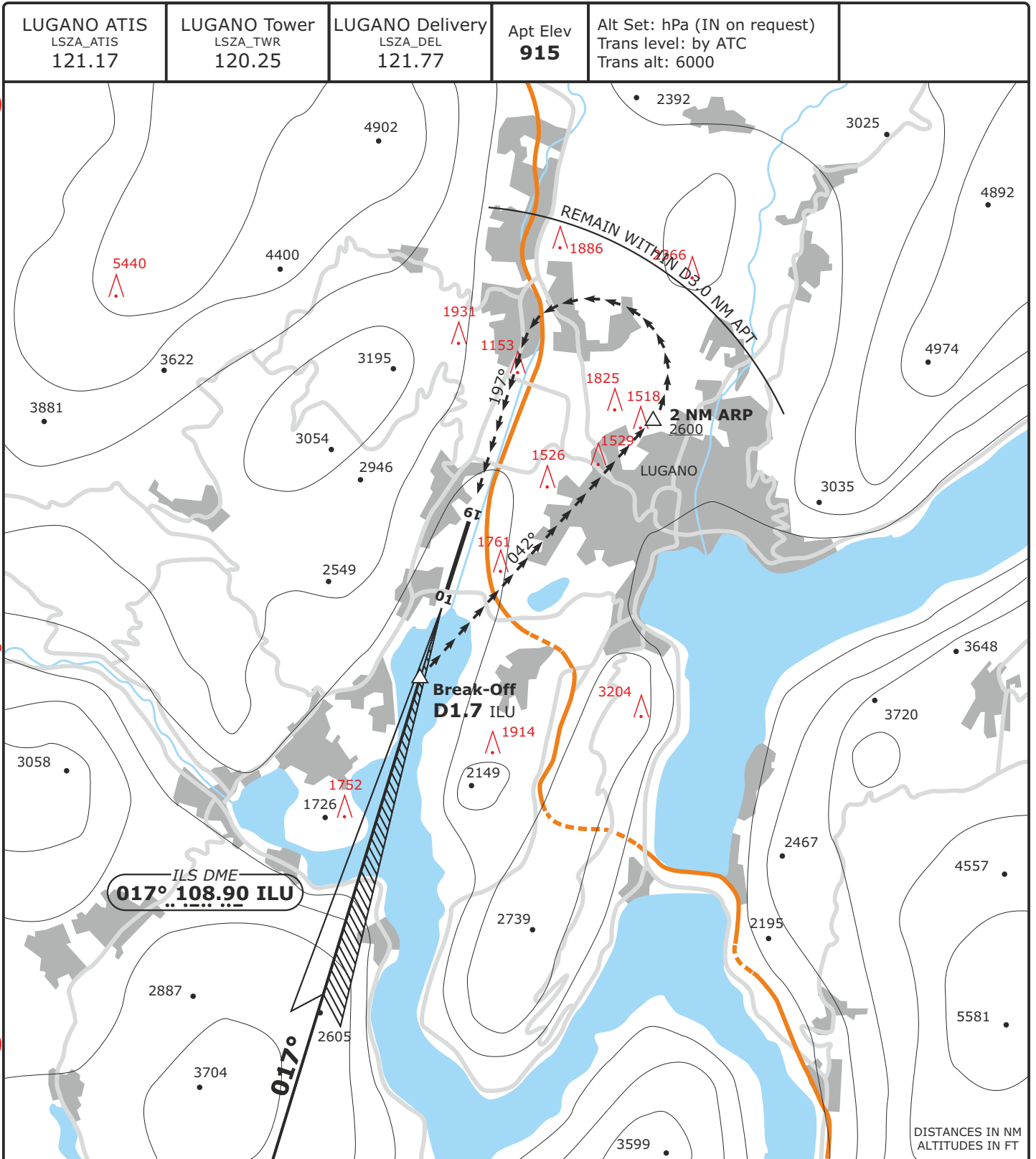
LUGANO, SWITZERLAND

APP CHART NO.4
Revision 23 APR 20

CHARLIE **CIRCLING**

RWY 19

Valid for flight simulation use only - do not use for real life navigation



Flight Simulator OPS

CIRCLE-TO-LAND RWY 19 for ACFT CAT A/B

If visual contact is established at D2.2 ILU, continue straight ahead. At D1.7 ILU turn RIGHT onto track 042° and continue descent visually to **2600**. At 2 NM ARP start LEFT turn onto base.
Descent to be arranged to maintain clean configuration as long as possible, safety and ATC requirement considered.

| | | |
|--|---|-----------------------|
| <p>WARNING: Disregard PAPI RWY 01 information. Use PAPI RWY 19 information only within 2 NM from threshold. PAPI RWY 19 has a glideslope of 4.17°. Circling WEST of runway centerline prohibited.</p> | Obstacle clearance altitude (height) | 2600 (1685) |
| | Visibility requirement | Day 3000m |

CHANGES: Freq, 3NM arc