

# LSZA/LUG

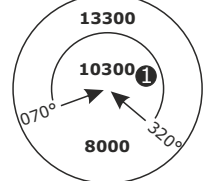
## LUGANO, SWITZERLAND

APP CHART NO.3  
Revision 11 OCT 18

**STEEP APPROACH 5.4%** **LOC DME LIMA**  
**RWY 01 / Circling RWY 19**

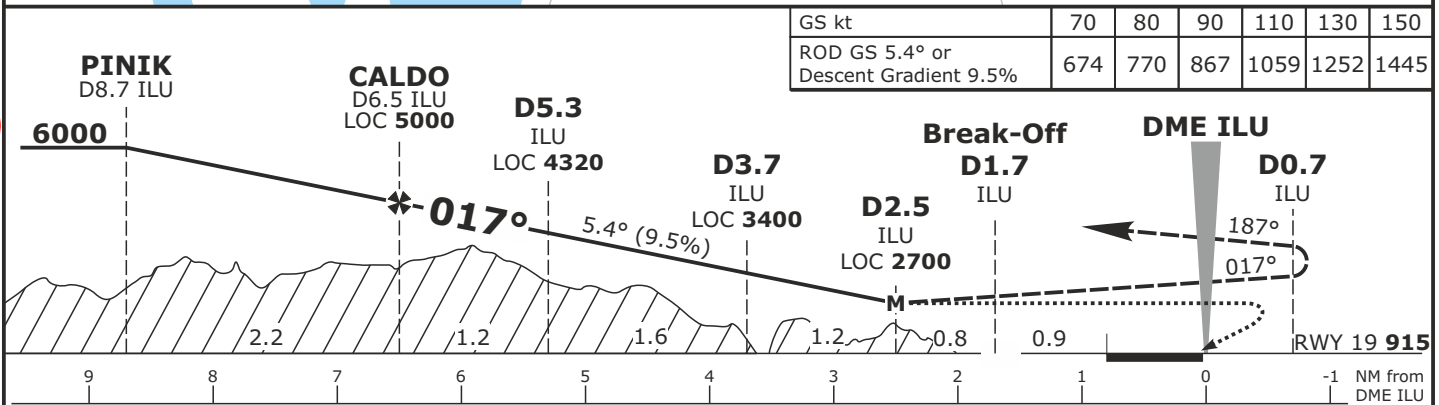
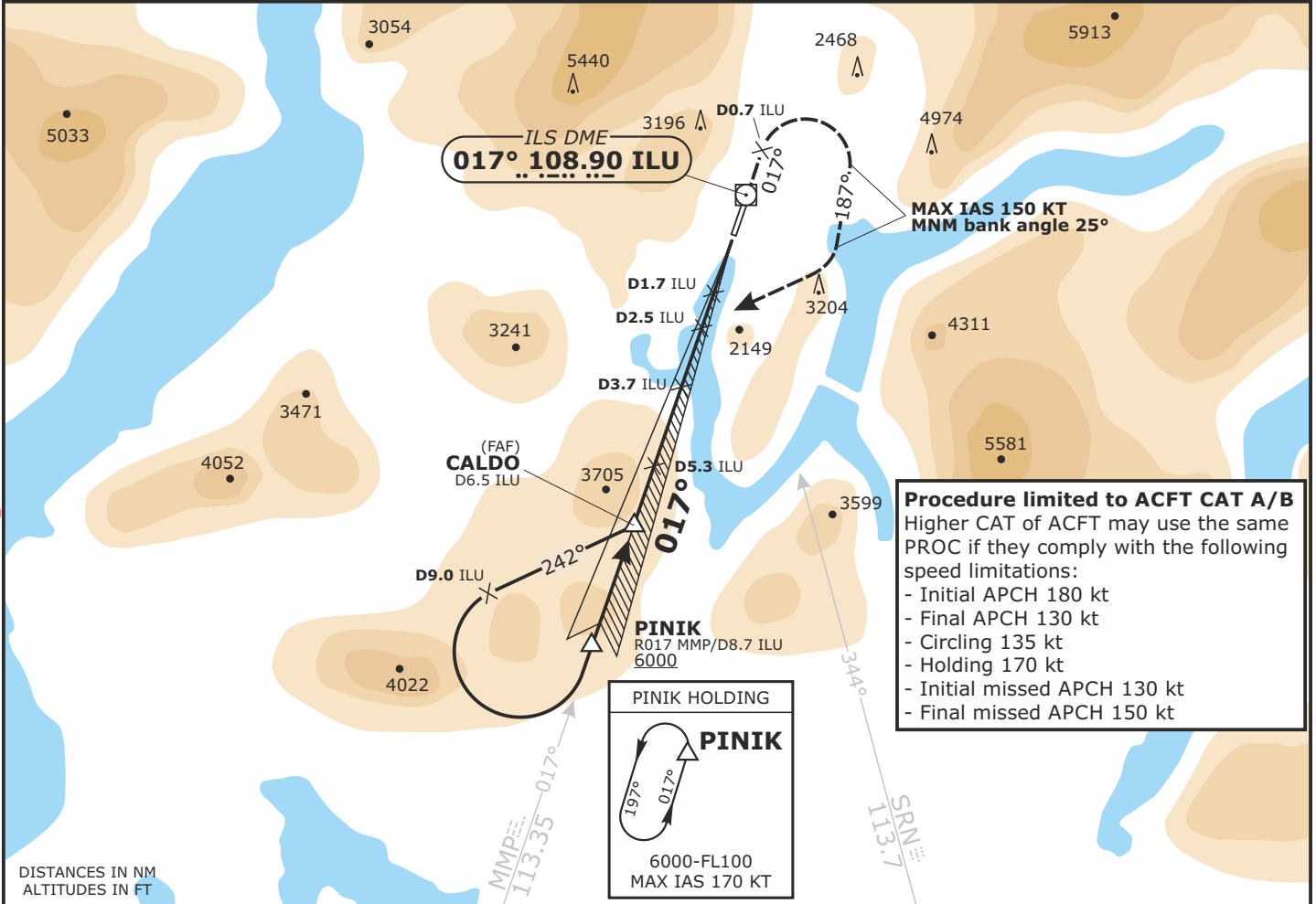
Valid for flight simulation use only - do not use for real life navigation

SWISS Radar LSAS_CTR 128.05	MILANO Radar LIMM_N_CTR 127.45	MILANO Radar LIMM_N_APP 126.75	LUGANO Tower LSZA_TWR 120.25	LUGANO Ground LSZA_GND 121.77	LUGANO ATIS LSZA_ATIS 121.17
LOC ILU <b>108.90</b>	Final Apch Crs <b>017°</b>	<b>D5.3 ILU</b> <b>4320 (3410)</b>	DA(H) <b>2700 (1790)</b>	Apt Elev 915 <b>RWY 915</b>	<b>MSA LSZA APT</b> 25 NM (12 NM)



**MISSED APCH:** Climb straight ahead. At D0.7 ILU passed the station, turn RIGHT (MAX IAS 150 KT, MNM bank angle 25°) onto track 187°. Climb to **6000**. When passing **5000**, turn RIGHT to intercept R017 to MMP. Proceed to PINIK.

Alt Set: hPA      RWY Elev: 33 hPA      Transition level: by ATC      Transition ALT: 7000



Flight Simulator OPS							CIRCLE-TO-LAND RWY 19 for ACFT CAT A/B					
							DME ILU	6	5	4	3	
<b>Missed APCH climb gradient requirement</b>							2.5%	3.0%	4.0%	5.0%	6.0%	7.0%
<b>Obstacle clearance altitude (height)</b>							3890 (2980)	3760 (2850)	3480 (2570)	3210 (2300)	2940 (2030)	2700 (1790)
<b>Visibility requirement</b>							refer to respective CIRCLING CHART					
Missed APCH climb gradient shall be maintained up to 5000												
							<b>Recommended crossing altitude (height)</b>	<b>4730 (3820)</b>	<b>4150 (3240)</b>	<b>3570 (2660)</b>	<b>2990 (2080)</b>	
							MAP at D2.5 ILU Procedure limited to ACFT CAT A/B CIRCLE-TO-LAND RWY 19 according APP CHART NO.4/5 PAPI RWY 19 has a glideslope of 4.17°.					