

# LSZA/LUG

## LUGANO, SWITZERLAND

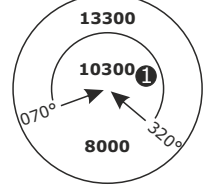
APP CHART NO.2  
Revision 11 OCT 18

APPROACH 4.4% **LOC DME HOTEL**

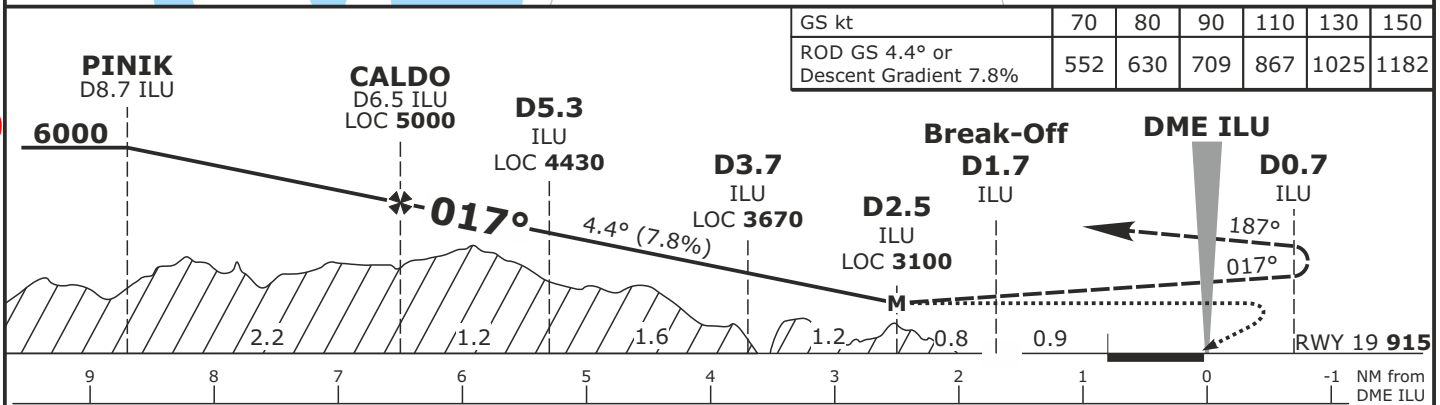
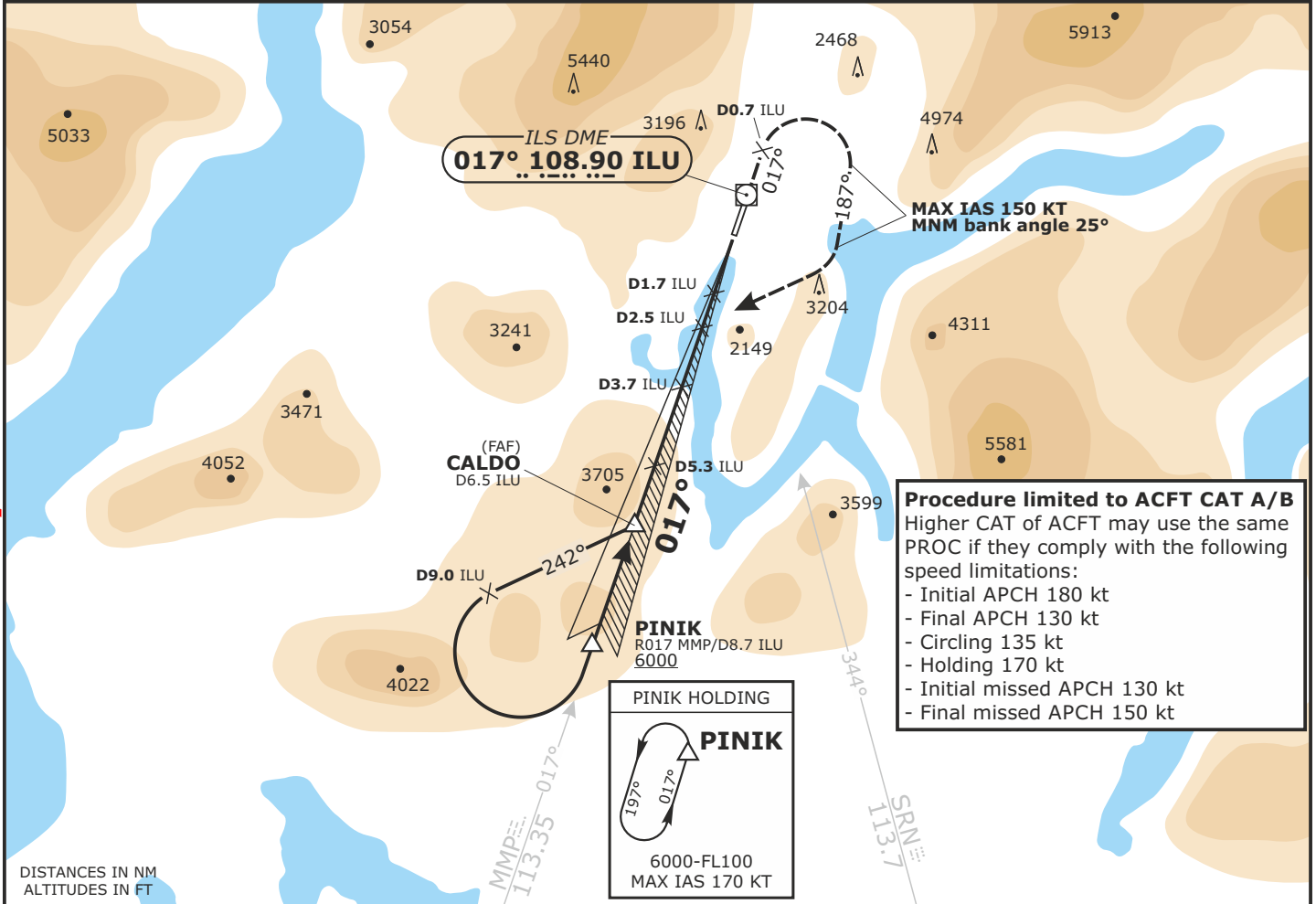
# RWY 01 / Circling RWY 19

SWISS Radar LSAS_CTR 128.05	MILANO Radar LIMM_N_CTR 127.45	MILANO Radar LIMM_N_APP 126.75	LUGANO Tower LSZA_TWR 120.25	LUGANO Ground LSZA_GND 121.77	LUGANO ATIS LSZA_ATIS 121.17
LOC ILU <b>108.90</b>	Final Apch Crs <b>017°</b>	<b>D5.3 ILU</b> <b>4430 (3520)</b>	DA(H) <b>3100 (2190)</b>	Apt Elev 915 <b>RWY 915</b>	<b>MSA LSZA APT</b> 25 NM (12 NM)

**MISSED APCH:** Climb straight ahead. At D0.7 ILU passed the station, turn RIGHT (MAX IAS 150 KT, MNM bank angle 25°) onto track 187°. Climb to **6000**. When passing **5000**, turn RIGHT to intercept R017 to MMP. Proceed to PINIK.



Alt Set: hPA      RWY Elev: 33 hPA      Transition level: by ATC      Transition ALT: 7000



Flight Simulator OPS					
CIRCLE-TO-LAND RWY 19 for ACFT CAT A/B					
Missed APCH climb gradient requirement	2.5%	3.0%	4.0%	5.0%	6.0%
Obstacle clearance altitude (height)	<b>3890</b> (2980)	<b>3760</b> (2850)	<b>3480</b> (2570)	<b>3210</b> (2300)	<b>3100</b> (2190)
Visibility requirement	refer to respective CIRCLING CHART				
Missed APCH climb gradient shall be maintained up to 5000					

DME ILU	6	5	4	3
Recommended crossing altitude (height)	<b>4760</b> (3850)	<b>4290</b> (3380)	<b>3810</b> (2900)	<b>3340</b> (2430)
MAP at D2.5 ILU Procedure limited to ACFT CAT A/B CIRCLE-TO-LAND RWY 19 according APP CHART NO.4/5 PAPI RWY 19 has a glideslope of 4.17°.				

Valid for flight simulation use only - do not use for real life navigation

CHANGES: LOC frequency