

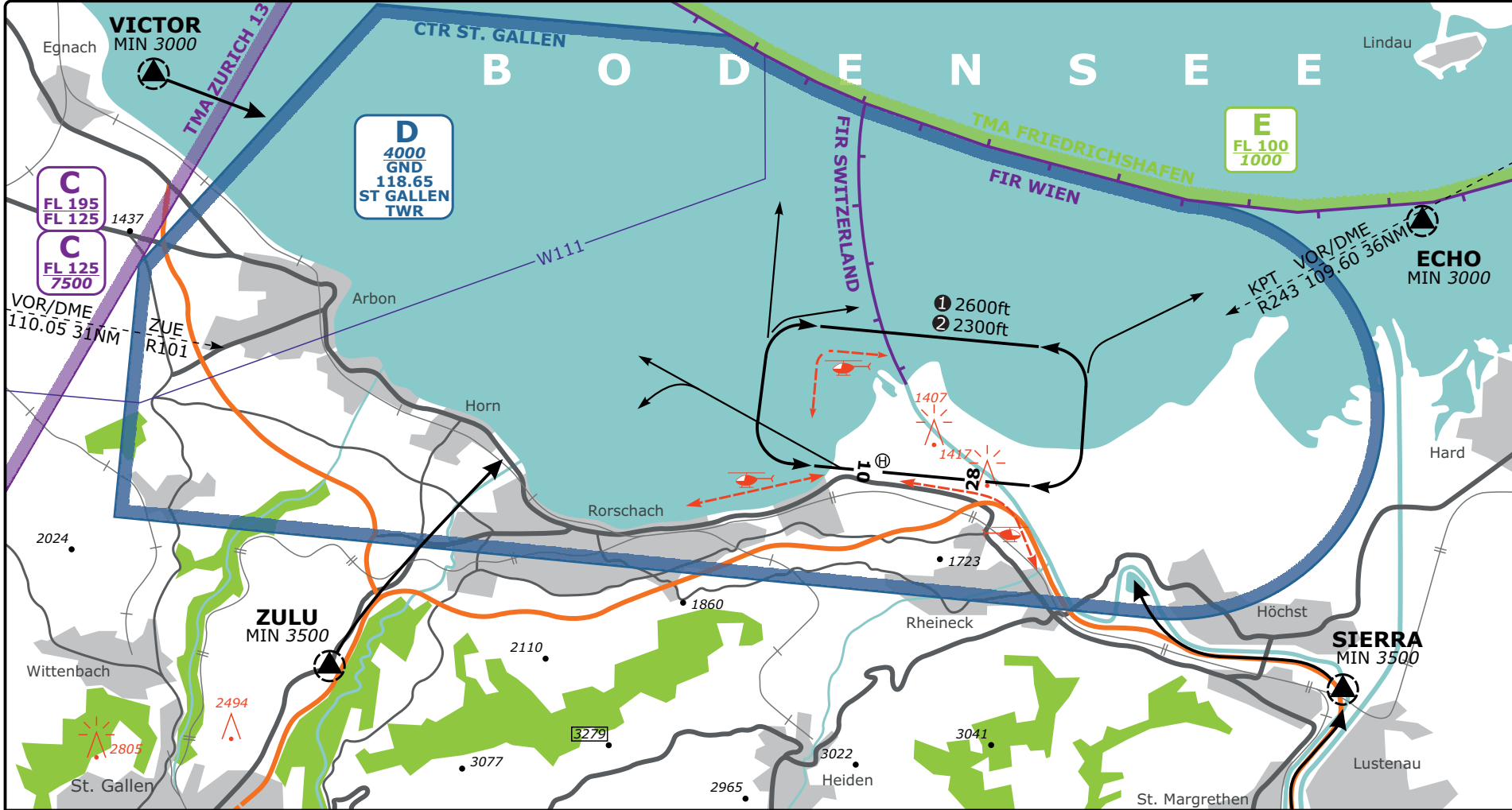
Valid for flight simulation use only - do not use for real life navigation

CHANGES: Airspace.

VACC Switzerland

www.vacc.ch

charts@vacc.ch



Swiss Radar  
LSAS\_CTR  
128.05

Swiss Information  
LSAS\_I\_CTR  
119.17

ST GALLEN Tower  
LSZR\_TWR  
118.65

Apt Elev  
**1306'**

VAC CHART NO.1  
Revision 11 FEB 12

**ST. GALLEN, SWITZERLAND**

VAC

Erster Funkkontakt 5 min vor Einflug in CTR  
First RDO contact 5 min prior entering CTR

  
**SIERRA**  
MNM 3500ft

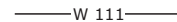
Nur für Anflug  
For ARR only

Platzrunden/ AD circuits:

- ① Einziehfahrwerk ACFT  
Retractable LDG-gear ACFT **2600ft**
- ② ACFT mit festem Fahrwerk  
Fixed LDG-gear ACFT **2300ft**



ARR & DEP



CTN: IFR Traffic

OBST ELEV: ft / HGT: ft