

# LSZR SID - TABLE OF CONTENTS

## P-RNAV (RNP 1) SID DESIGNATION

RWY 10	RWY 28
ALAGO 4L	ALAGO 4R
BEMKI 2L	BEMKI 2R
KPT 3L	KPT 3R
TRA 2L	TRA 2R

## B-RNAV (RNP 5) SID DESIGNATION

RWY 10	RWY 28
ALAGO 4N	ALAGO 4V
BEMKI 2N	BEMKI 2V
TRA 2N	TRA 2V

## NON-RNAV SID DESIGNATION

RWY 10	RWY 28
AMIKI 2N	AMIKI 2V
KPT 3N	KPT 3V
SITOR 2N	SITOR 2V

## TRANSITION ROUTES AFTER ALAGO

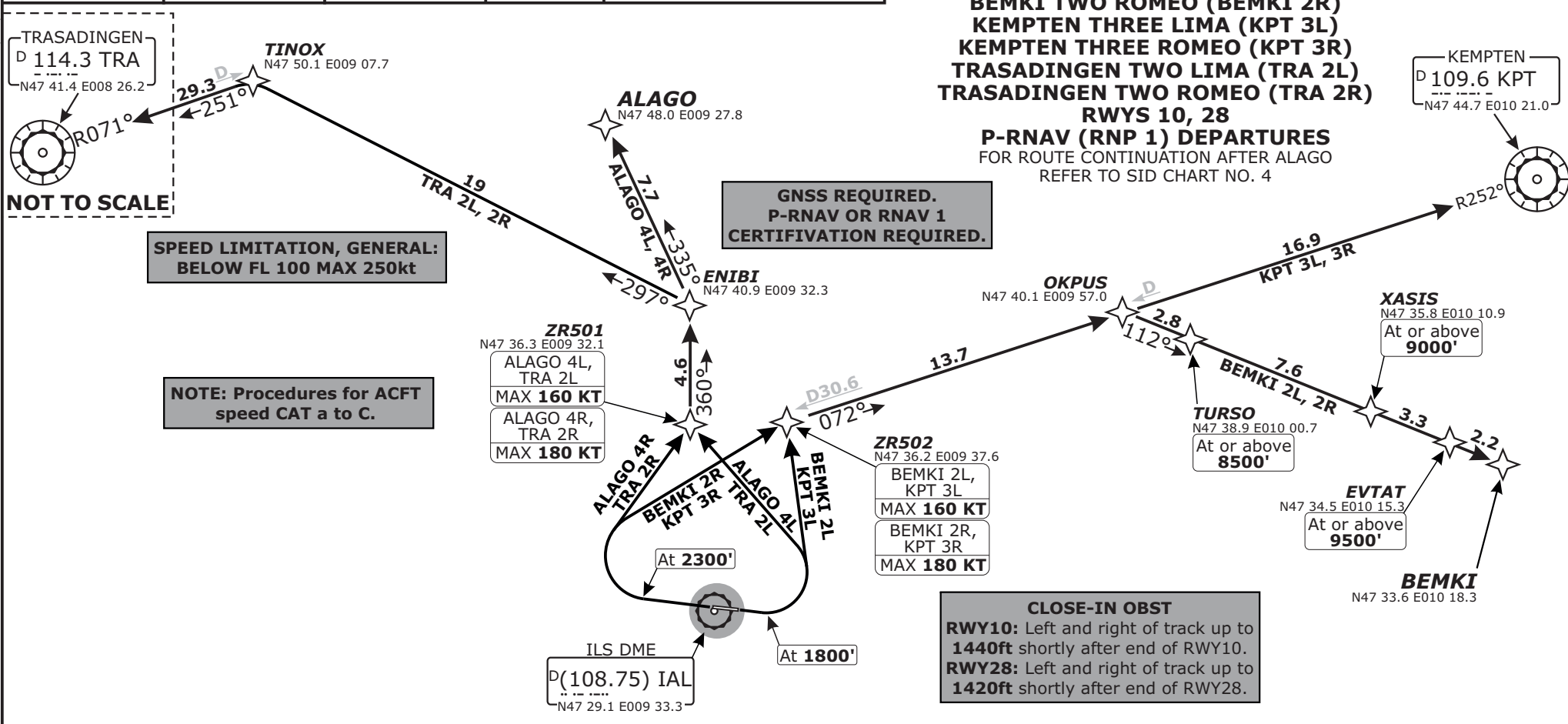
# Valid for flight simulation use only - do not use for real life navigation

CHANGES: ARR frequency.

Swiss Radar LSAS_CTR <b>128.05</b>	ZURICH Arrival LSZH_APP <b>131.15</b>	ZURICH Arrival LSZH_A_APP <b>119.92</b>	Apt Elev <b>1306'</b>	Alt Set: hPa (IN on request) Trans level: by ATC Trans alt: 5000'
--	---	---	--------------------------	---

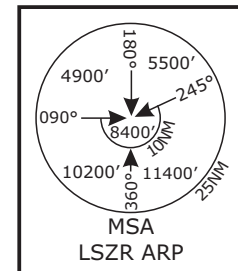
**ALAGO FOUR LIMA (ALAGO 4L)**  
**ALAGO FOUR ROMEO (ALAGO 4R)**  
**BEMKI TWO LIMA (BEMKI 2L)**  
**BEMKI TWO ROMEO (BEMKI 2R)**  
**KEMPTEN THREE LIMA (KPT 3L)**  
**KEMPTEN THREE ROMEO (KPT 3R)**  
**TRASADINGEN TWO LIMA (TRA 2L)**  
**TRASADINGEN TWO ROMEO (TRA 2R)**

**RWYS 10, 28**  
**P-RNAV (RNP 1) DEPARTURES**  
 FOR ROUTE CONTINUATION AFTER ALAGO  
 REFER TO SID CHART NO. 4



## Initial climb clearance **5000'**

SID	RWY	ROUTING
<b>ALAGO 4L</b>	<b>10</b>	Climb straight ahead. At <b>1800'</b> turn LEFT (MAX IAS 160KT) to ZR501. Proceed via ENIBI to ALAGO.
<b>ALAGO 4R</b>	<b>28</b>	Climb straight ahead. At <b>2300'</b> turn RIGHT (MAX IAS 180KT) to ZR501. Proceed via ENIBI to ALAGO.
<b>BEMKI 2L</b>	<b>10</b>	Climb straight ahead. At <b>1800'</b> turn LEFT (MAX IAS 160KT) to ZR502. Proceed via OKPUS, TURSO, XASIS, EVTAT to BEMKI.
<b>BEMKI 2R</b>	<b>28</b>	Climb straight ahead. At <b>2300'</b> turn RIGHT (MAX IAS 180KT) to ZR502. Proceed via OKPUS, TURSO, XASIS, EVTAT to BEMKI.
<b>KPT 3L</b>	<b>10</b>	Climb straight ahead. At <b>1800'</b> turn LEFT (MAX IAS 160KT) to ZR502. Proceed via OKPUS to KPT.
<b>KPT 3R</b>	<b>28</b>	Climb straight ahead. At <b>2300'</b> turn RIGHT (MAX IAS 180KT) to ZR502. Proceed via OKPUS to KPT.
<b>TRA 2L</b>	<b>10</b>	Climb straight ahead. At <b>1800'</b> turn LEFT (MAX IAS 160KT) to ZR501. Proceed via ENIBI, TINOX to TRA.
<b>TRA 2R</b>	<b>28</b>	Climb straight ahead. At <b>2300'</b> turn RIGHT (MAX IAS 180KT) to ZR501. Proceed via ENIBI, TINOX to TRA.



**LSZR/ACH ALTENRHEIN**

SID CHART NO. 1  
Revision 11 FEB 12

**ST. GALLEN, SWITZERLAND**

**P-RNAV (RNP 1) SID**

© VAACC Switzerland

http://www.vaacc.ch/

charts@vaacc.ch

**Valid for flight simulation use only - do not use for real life navigation**

CHANGES: ARR frequency.

© VAACC Switzerland

http://www.vaacc.ch/

charts@vaacc.ch

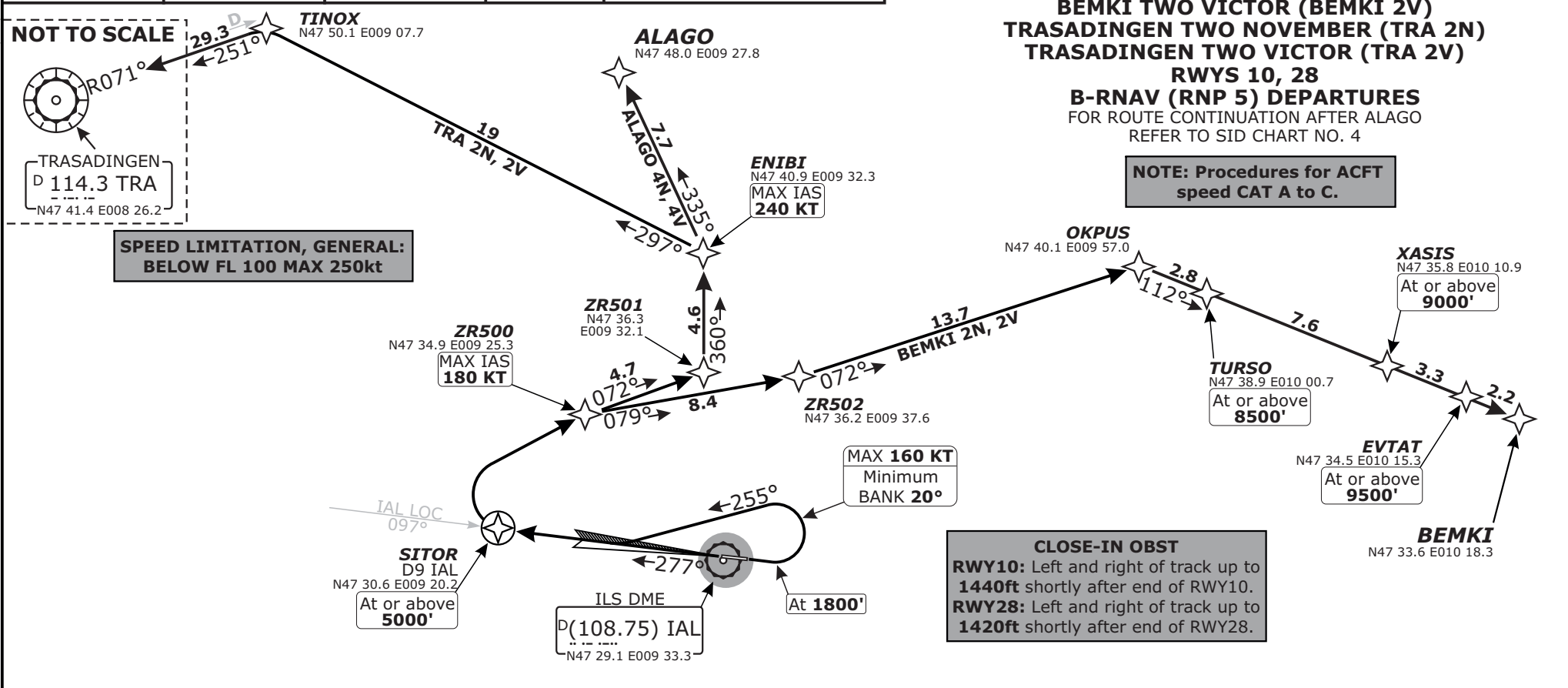
Swiss Radar LSAS_CTR 128.05	ZURICH Arrival LSZH_APP 131.15	ZURICH Arrival LSZH_A_APP 119.92	Apt Elev <b>1306'</b>	Alt Set: hPa (IN on request) Trans level: by ATC Trans alt: 5000'
-----------------------------------	--------------------------------------	--	--------------------------	---

**ALAGO FOUR NOVEMBER (ALAGO 4N)  
ALAGO FOUR VICTOR (ALAGO 4V)  
BEMKI TWO NOVEMBER (BEMKI 2N)  
BEMKI TWO VICTOR (BEMKI 2V)  
TRASADINGEN TWO NOVEMBER (TRA 2N)  
TRASADINGEN TWO VICTOR (TRA 2V)**

**RWYS 10, 28**

**B-RNAV (RNP 5) DEPARTURES**  
FOR ROUTE CONTINUATION AFTER ALAGO  
REFER TO SID CHART NO. 4

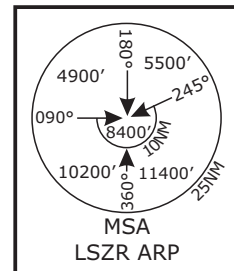
**NOTE: Procedures for ACFT  
speed CAT A to C.**



**Initial climb clearance 5000'**

SID	RWY	ROUTING
<b>ALAGO 4N</b>	<b>10</b>	Climb straight ahead. At <b>1800'</b> turn LEFT (MAX IAS 160KT, MIM bank 20°), 255° track, intercept IAL LOC outbound to SITOR. At SITOR turn RIGHT (MAX IAS 180KT). Proceed via ZR500, ZR501, ENIBI to ALAGO.
<b>ALAGO 4V</b>	<b>28</b>	Climb straight ahead. Use IAL LOC outbound for track guidance. At SITOR turn RIGHT (MAX IAS 180KT). Proceed via ZR500, ZR501, ENIBI to ALAGO.
<b>BEMKI 2N</b>	<b>10</b>	Climb straight ahead. At <b>1800'</b> turn LEFT (MAX IAS 160KT, MIM bank 20°), 255° track, intercept IAL LOC outbound to SITOR. At SITOR turn RIGHT (MAX IAS 180KT). Proceed via ZR500, ZR502, OKPUS, TURSO, XASIS, EVTAT to BEMKI.
<b>BEMKI 2V</b>	<b>28</b>	Climb straight ahead. Use IAL LOC outbound for track guidance. At SITOR turn RIGHT (MAX IAS 180KT). Proceed via ZR500, ZR502, OKPUS, TURSO, XASIS, EVTAT to BEMKI.
<b>TRA 2N</b>	<b>10</b>	Climb straight ahead. At <b>1800'</b> turn LEFT (MAX IAS 160KT, MIM bank 20°), 255° track, intercept IAL LOC outbound to SITOR. At SITOR turn RIGHT (MAX IAS 180KT). Proceed via ZR500, ZR501, ENIBI, TINOX to TRA.
<b>TRA 2V</b>	<b>28</b>	Climb straight ahead. Use IAL LOC outbound for track guidance. At SITOR turn RIGHT (MAX IAS 180KT). Proceed via ZR500, ZR501, ENIBI, TINOX to TRA.

**CLOSE-IN OBST**  
**RWY10:** Left and right of track up to **1440ft** shortly after end of RWY10.  
**RWY28:** Left and right of track up to **1420ft** shortly after end of RWY28.



**LSZR/ACH** ALTENRHEIN

SID CHART NO. 2  
Revision 11 FEB 12

**B-RNAV (RNP 5) SID**  
**ST. GALLEN, SWITZERLAND**

**Valid for flight simulation use only - do not use for real life navigation**

CHANGES: ARR frequency.

© VAACC Switzerland

http://www.vaacc.ch/

charts@vaacc.ch

Swiss Radar  
LSAS\_CTR  
128.05

ZURICH Arrival  
LSZH\_APP  
131.15

ZURICH Arrival  
LSZH\_A\_APP  
119.92

Apt Elev  
**1306'**

Alt Set: hPa (IN on request)  
Trans level: by ATC  
Trans alt: 5000'

**AMIKI TWO NOVEMBER (AMIKI 2N)  
AMIKI TWO VICTOR (AMIKI 2V)  
KEMPTEN THREE NOVEMBER (KPT 3N)  
KEMPTEN THREE VICTOR (KPT 3V)  
SITOR TWO NOVEMBER (SITOR 2N)  
SITOR TWO VICTOR (SITOR 2V)  
RWYS 10, 28  
NON-RNAV DEPARTURES**

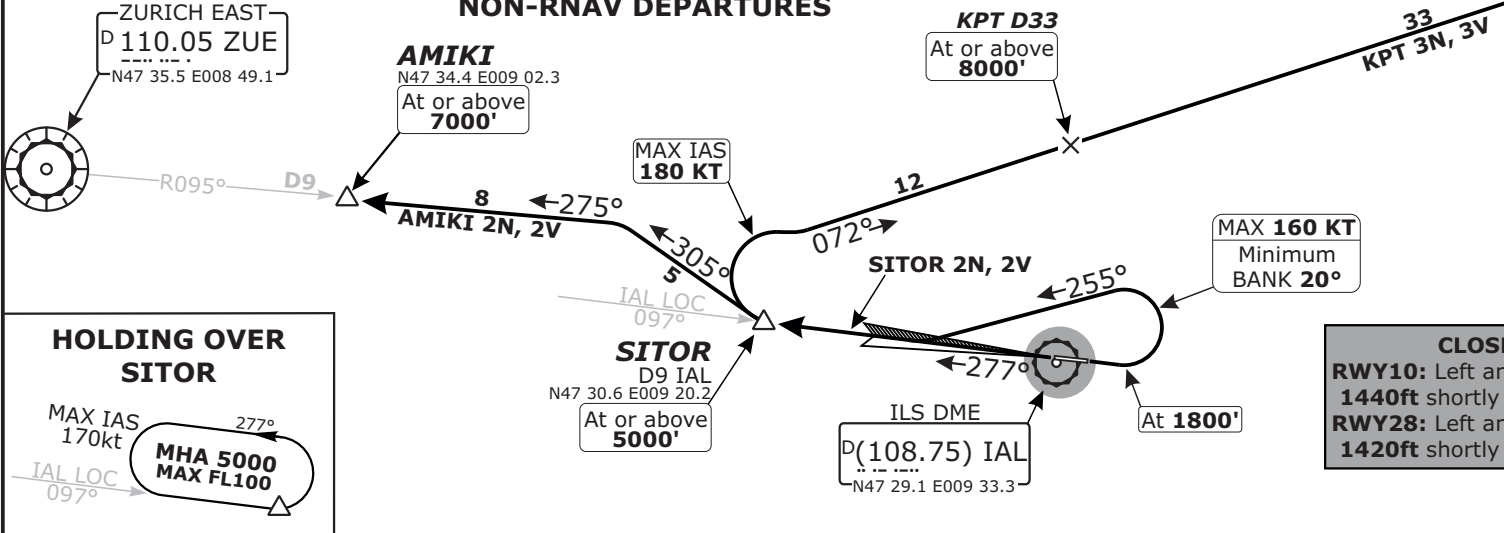
**SPEED LIMITATION, GENERAL:  
BELOW FL 100 MAX 250kt**

**NOTE: Procedures for ACFT  
speed CAT A to C.**

KEMPTEN  
D 109.6 KPT  
N47 44.7 E010 21.0



NOT TO SCALE



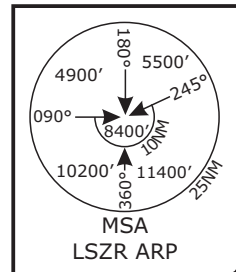
**HOLDING OVER  
SITOR**

MAX IAS  
170kt  
MHA 5000  
MAX FL100

**CLOSE-IN OBST**  
RWY10: Left and right of track up to 1440ft shortly after end of RWY10.  
RWY28: Left and right of track up to 1420ft shortly after end of RWY28.

**Initial climb clearance 5000'**

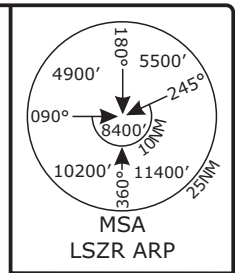
SID	RWY	ROUTING
<b>AMIKI 2N</b>	<b>10</b>	Climb straight ahead. At <b>1800'</b> turn LEFT (MAX IAS 160KT, MIM bank 20°), 255° track, intercept IAL LOC outbound to SITOR. At SITOR turn RIGH, 305° track, intercept ZUE R-095 inbound to AMIKI.
<b>AMIKI 2V</b>	<b>28</b>	Climb straight ahead. Use IAL LOC outbound for track guidance. At SITOR turn RIGH, 305° track, intercept ZUE R-095 inbound to AMIKI.
<b>KPT 3N</b>	<b>10</b>	Climb straight ahead. At <b>1800'</b> turn LEFT (MAX IAS 160KT, MIM bank 20°), 255° track, intercept IAL LOC outbound to SITOR. At SITOR turn RIGHT (MAX IAS 180KT), intercept KPT R-252 inbound to KPT.
<b>KPT 3V</b>	<b>28</b>	Climb straight ahead. Use IAL LOC outbound for track guidance. At SITOR turn RIGHT (MAX IAS 180KT), intercept KPT R-252 inbound to KPT.
<b>SITOR 2N</b>	<b>10</b>	Climb straight ahead. At <b>1800'</b> turn LEFT (MAX IAS 160KT, MIM bank 20°), 255° track, intercept IAL LOC outbound to SITOR. Enter Holding at SITOR.
<b>SITOR 2V</b>	<b>28</b>	Climb straight ahead. Use IAL LOC outbound for track guidance, proceed to SITOR. Enter Holding at SITOR.



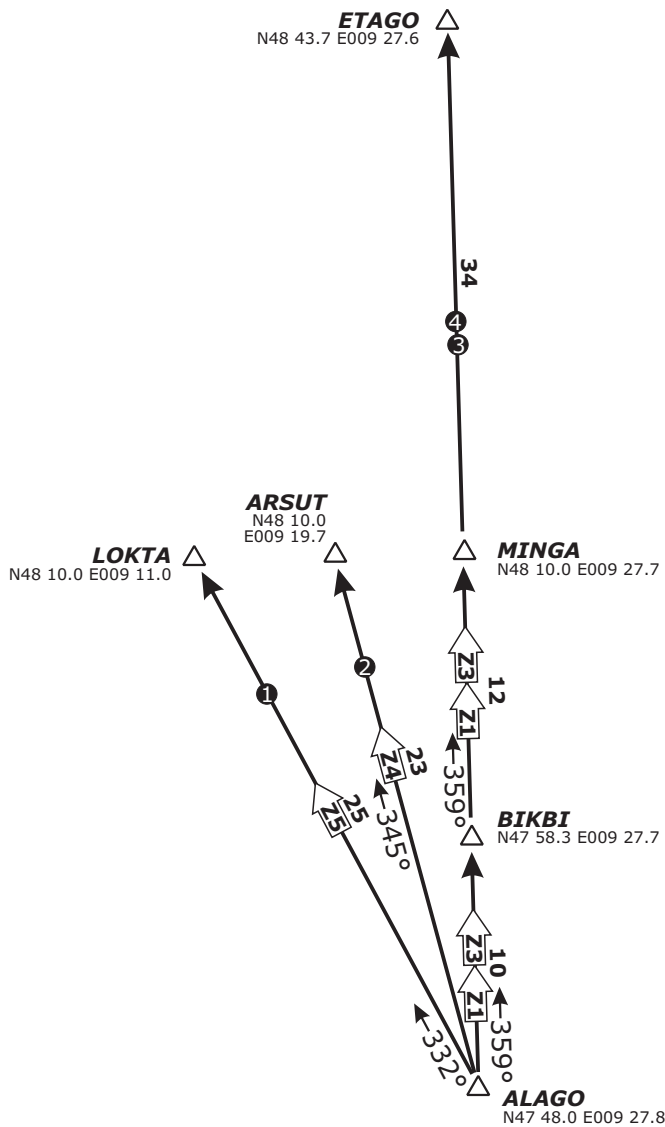
LSZR/ACH ALTENRHEIN  
SID CHART NO. 3  
Revision 11 FEB 12  
ST. GALLEN, SWITZERLAND  
NON-RNAV SID

Valid for flight simulation use only - do not use for real life navigation

Swiss Radar LSAS_CTR 128.05	ZURICH Arrival LSZH_APP 131.15	ZURICH Arrival LSZH_A_APP 119.92	Apt Elev <b>1306'</b>	Alt Set: hPa (IN on request) Trans level: by ATC Trans alt: 5000'
-----------------------------------	--------------------------------------	--	--------------------------	---



**NORTHBOUND TRANSITION ROUTES  
AFTER ALAGO**



- ① - For departures with destination LFST  
- For departures at or below **FL140**.
- ② For departures with destination EDDS.
- ③ - For departures with destination EDDF  
- For departures between **FL150 & FL230**.
- ④ For departures at or above **FL260**.

