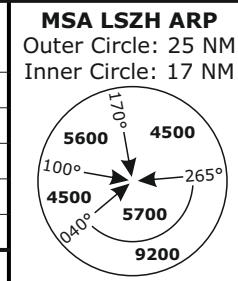


Frequencies		
	135.015	133.050
Swiss Radar	128.050	135.680
	-	-
Zurich Arrival	135.230	130.560
Zurich Final	125.330	-
Zurich ATIS	125.730	-
AD ELEV 1417ft	TRANS LVL by ATC	



**GIPOL HOLDING**

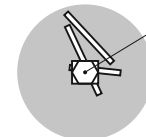
**GIPOL**

7000-FL240  
MAX IAS 230 KT  
1 MIN

(IAF)  
**GIPOL**  
R258/D32 ZUE  
7000

D32 258° ZUE 110.05

KLOTEN  
D 114.85 KLO



**SPEED RESTRICTION**  
MAX IAS 250 KT below FL100

WILLISAU  
D 116.90 WIL

R013 WIL  
WIL 3Z 20