

LSZR/ACH

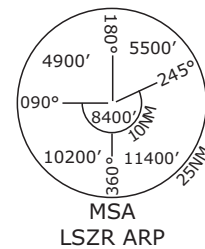
ST. GALLEN, SWITZERLAND

APP CHART NO.1
Revision 04 MAR 13

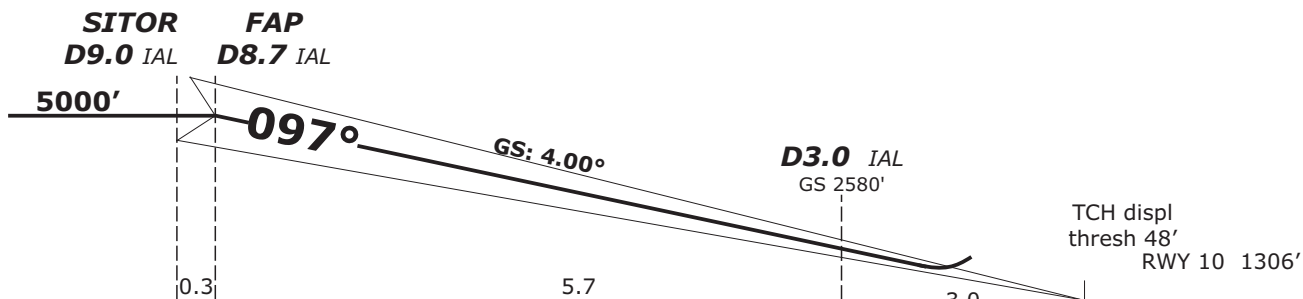
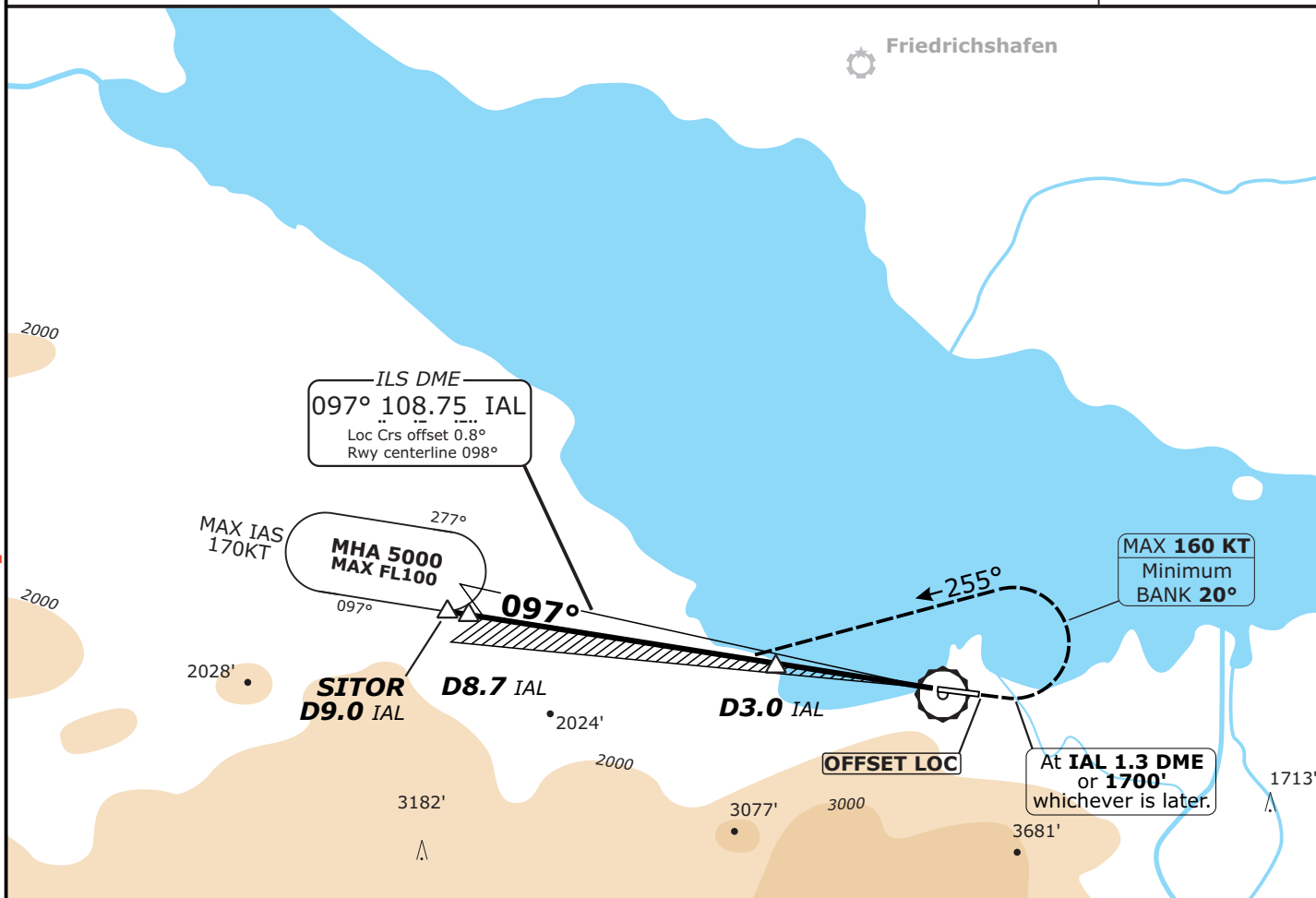
4.00° GS
CAT A, B & C ILS RWY 10

APP

Swiss Radar LSAS_CTR 128.05	ZURICH Arrival LSZH_APP 131.15	ZURICH Arrival LSZH_A_APP 119.92	ST GALLEN Tower LSZR_TWR 118.65
LOC IAL 108.75	Final Apch Crs 097°	GS D3.0 IAL 2580' (1274')	ILS DA(H) Refer to Minimums
Apt Elev 1306' RWY 1306'			
Alt Set: hPa		Rwy Elev: 47 hPa	Trans level: By ATC
			Trans alt: 5000'



MISSED APCH: Climb straight ahead. At IAL D1.3 past the station or **1700'**, whichever is later, turn LEFT (MAX IAS 160KT, MNM bank 20°), track 255°, intercept IAL LOC outbound. Proceed to SITOR. Cross IAL D6.5 at **4000'** or above. Climb to **5000'**.



Flight Simulator-OPS		CIRCLE-TO-LAND TO RWY 28 north of AP only		Gnd speed-Kts					
STRAIGHT-IN LANDING RWY 10				70	90	100	120	140	160
ILS				Descent Gradient 4.00° or LOC Descent Gradient 7.0%					
DA(H): 1806' (500')				496	637	708	850	991	1133
A	RVR 1200m	CAT A	110	MDA(H)	2170'	(870')	1900m		
B		CAT B	135	MDA(H)	2170'	(870')	2800m		
C		CAT C	160	MDA(H)	2270'	(970')	3700m		
D	NOT APPLICABLE	CAT D		NOT APPLICABLE					

Valid for flight simulation use only - do not use for real life navigation

CHANGES: CRS in Descent
Graph, small corrections