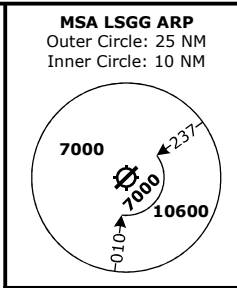
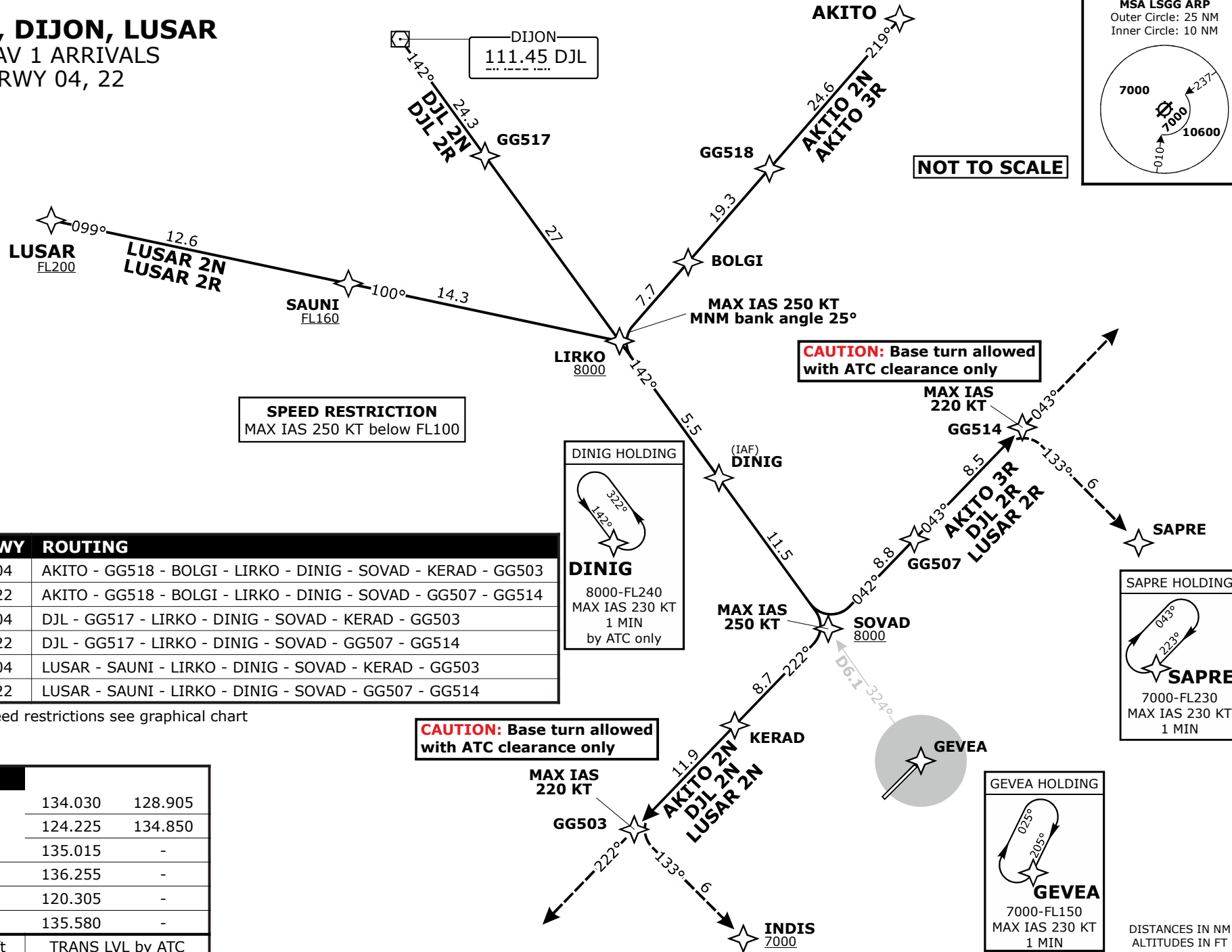


AKITO, DIJON, LUSAR
RNAV 1 ARRIVALS
RWY 04, 22



NOT TO SCALE

SPEED RESTRICTION
MAX IAS 250 KT below FL100

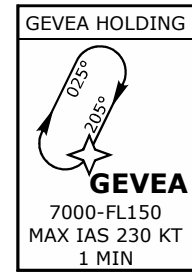
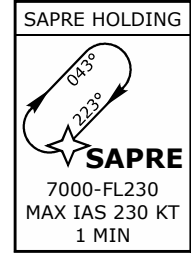
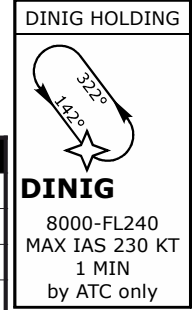
CAUTION: Base turn allowed with ATC clearance only

CAUTION: Base turn allowed with ATC clearance only

STAR	RWY	ROUTING
AKITO 2N	04	AKITO - GG518 - BOLGI - LIRKO - DINIG - SOVAD - KERAD - GG503
AKITO 3R	22	AKITO - GG518 - BOLGI - LIRKO - DINIG - SOVAD - GG507 - GG514
DJL 2N	04	DJL - GG517 - LIRKO - DINIG - SOVAD - KERAD - GG503
DJL 2R	22	DJL - GG517 - LIRKO - DINIG - SOVAD - GG507 - GG514
LUSAR 2N	04	LUSAR - SAUNI - LIRKO - DINIG - SOVAD - KERAD - GG503
LUSAR 2R	22	LUSAR - SAUNI - LIRKO - DINIG - SOVAD - GG507 - GG514

Altitude and speed restrictions see graphical chart

Frequencies	
	134.030 128.905
Swiss Radar	124.225 134.850
	135.015 -
Geneva Arrival	136.255 -
Geneva Final	120.305 -
Geneva ATIS	135.580 -
AD ELEV 1411ft	TRANS LVL by ATC



DISTANCES IN NM
ALTITUDES IN FT