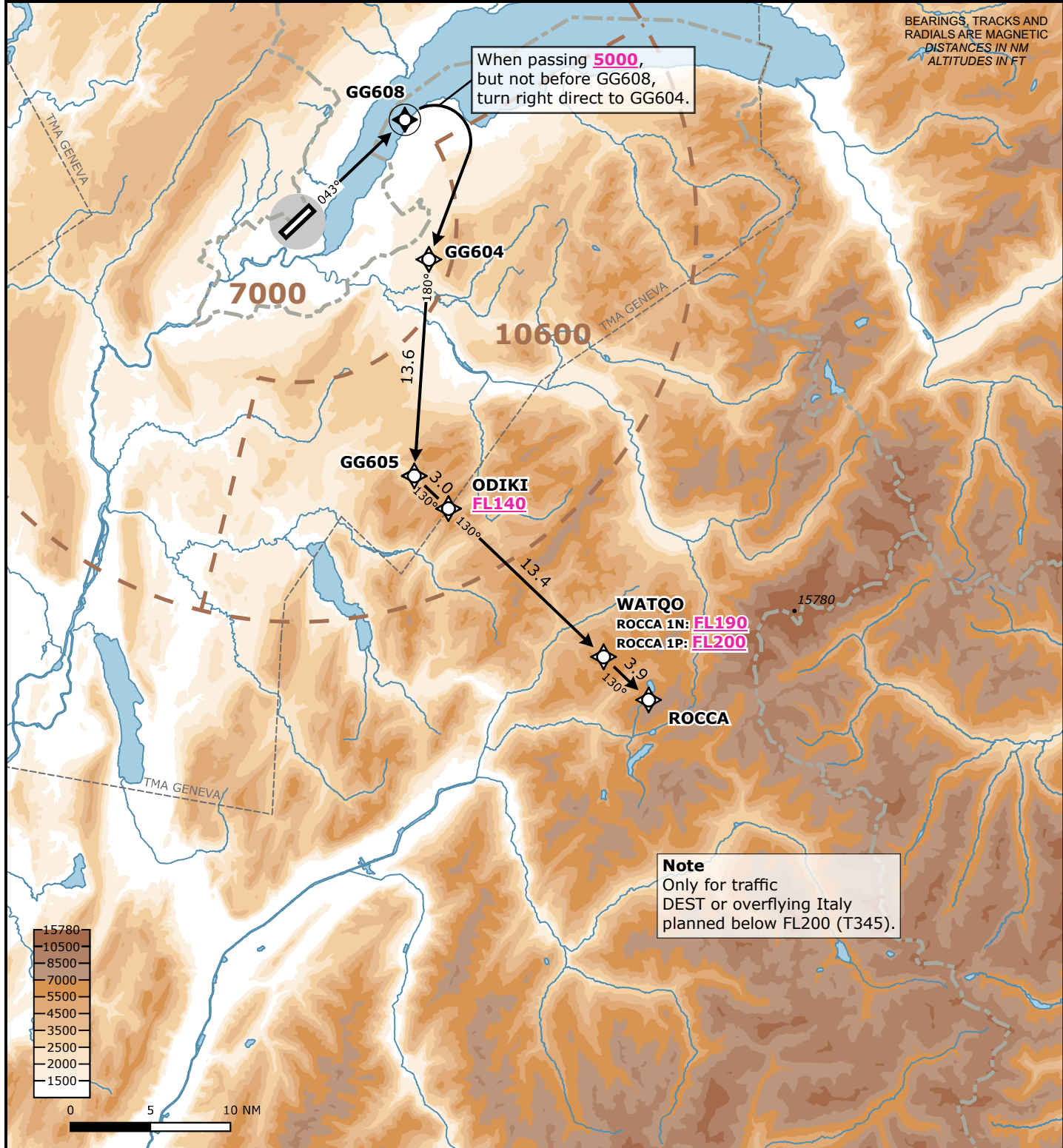


Frequencies	
Swiss Radar	135.015 134.850 128.905 124.225 134.030 -
Geneva Arrival	136.255 -
Geneva Departure	119.530 -
Geneva ATIS	135.580 -

Navigation Specification		
RNAV 1		
GNSS or DME/DME/IRU required.		
<b>Initial climb clearance FL090</b>		
AD ELEV 1411 ft	TRANS LVL by ATC	TRANS ALT 7000 ft

**MSA LSGG ARP**  
 Outer Circle: 25 NM  
 Inner Circle: 10 NM

Valid for flight simulation use only - do not use for real life navigation



RWY	SID	Lateral Routing	Vertical Routing
04	ROCCA 1N	Climb on track 043°. When passing 5000 ft, but not before GG608, turn right direct to GG604.	Initial climb clearance FL090. Cross ODIKI at FL140 or above, and WATQO at FL190 or above.
	ROCCA 1P	Proceed via GG605, ODIKI, WATQO to ROCCA.	Initial climb clearance FL090. Cross ODIKI at FL140 or above, and WATQO at FL200 or above.

Changes: Complete revision