

# LSGG/GVA

## GENEVA, SWITZERLAND

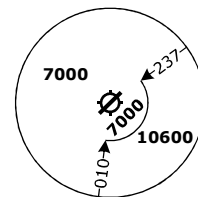
SID CHART NO. 04-05  
Revision 31 OCT 24

RNAV 1 SID

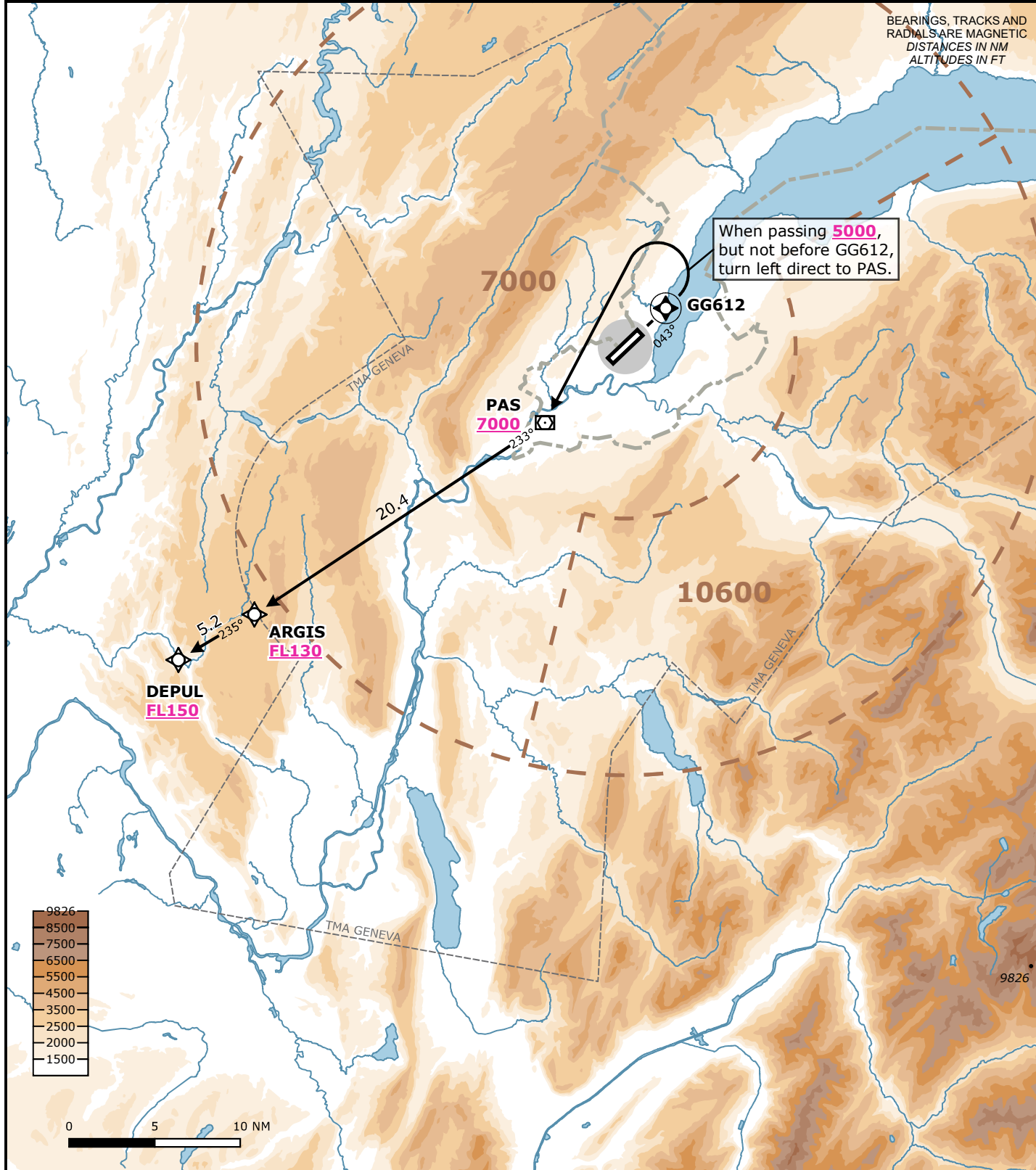
RWY 04 **DEPUL 1P**

Frequencies		Navigation Specification		
Swiss Radar	135.015	134.850	RNAV 1	
	128.905	124.225	GNSS or DME/DME/IRU required.	
	134.030	-		
Geneva Arrival	136.255	-	<b>Initial climb clearance FL090</b>	
Geneva Departure	119.530	-		
Geneva ATIS	135.580	-		
		AD ELEV 1411 ft	TRANS LVL by ATC	TRANS ALT 7000 ft

MSA LSGG ARP  
Outer Circle: 25 NM  
Inner Circle: 10 NM



Valid for flight simulation use only - do not use for real life navigation



BEARINGS, TRACKS AND RADIALS ARE MAGNETIC  
DISTANCES IN NM  
ALTITUDES IN FT

When passing 5000, but not before GG612, turn left direct to PAS.

RWY	SID	Lateral Routing	Vertical Routing
04	DEPUL 1P	Climb on track 043°. When passing 5000 ft, but not before GG612, turn left direct to PAS. Proceed via ARGIS to DEPUL.	Initial climb clearance FL090. Cross PAS at 7000 ft or above. If cleared FL150 or above, cross ARGIS at FL130 or above, DEPUL at FL150 or above.

Changes: Complete revision