

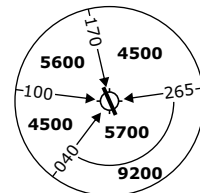
LSZH/ZRH

ZURICH, SWITZERLAND

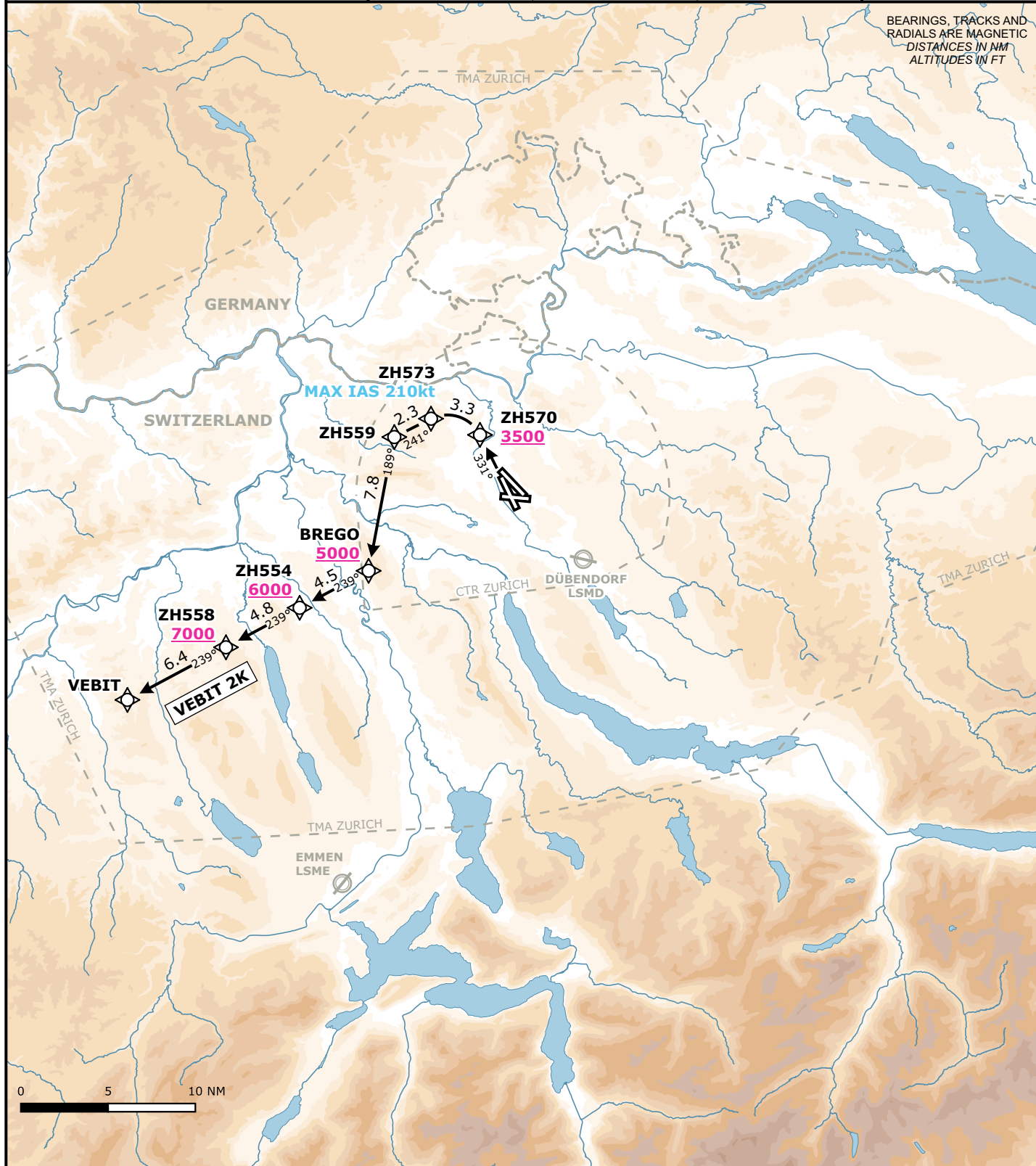
SID CHART NO. 34-1
Revision 25 JAN 24

RNP 1 SID
RWY 34

Frequencies		Remarks			MSA LSZH ARP Outer Circle: 25 NM Inner Circle: 17 NM
Swiss Radar	135.015 133.050 128.050 133.905 135.680 -	RF required. RNP 1 Certification required.			
Zurich Arrival	135.230 130.560				
Zurich Departure	125.955 -	Initial climb clearance 5000 ft			
Zurich ATIS	125.730 -	AD ELEV 1417 ft	TRANS LVL by ATC	TRANS ALT 7000 ft	



Valid for flight simulation use only - do not use for real life navigation



BEARINGS, TRACKS AND RADIALS ARE MAGNETIC
DISTANCES IN NM
ALTITUDES IN FT

RWY	SID	Lateral Routing	Vertical Routing
34	VEBIT 2K	Climb on course 331. Proceed via ZH570, ZH573, ZH559, BREGO, ZH554, ZH558 to VEBIT. (MAX IAS 210 kt until ZH573).	Initial climb clearance 5000 ft. Cross ZH570 at 3500 ft or above, BREGO at 5000 ft or above, ZH554 at 6000 ft or above, ZH558 at 7000 ft or above.

Changes: Complete revision