

**Valid for flight simulation use only - do not use for real life navigation**

CHANGES: ARR frequency.

© VAACC Switzerland

http://www.vaacc.ch/

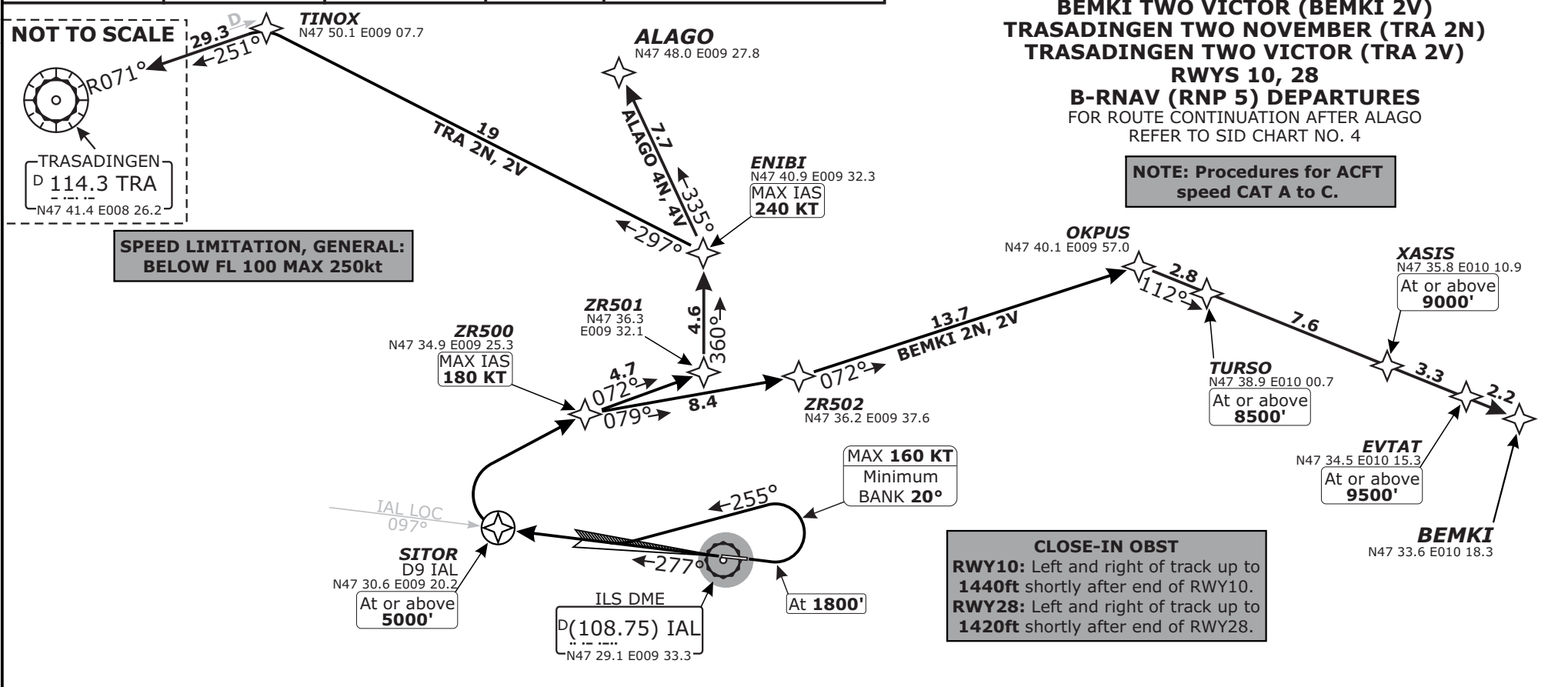
charts@vaacc.ch

Swiss Radar LSAS_CTR 128.05	ZURICH Arrival LSZH_APP 131.15	ZURICH Arrival LSZH_A_APP 119.92	Apt Elev <b>1306'</b>	Alt Set: hPa (IN on request) Trans level: by ATC Trans alt: 5000'
-----------------------------------	--------------------------------------	--	--------------------------	---

**ALAGO FOUR NOVEMBER (ALAGO 4N)  
ALAGO FOUR VICTOR (ALAGO 4V)  
BEMKI TWO NOVEMBER (BEMKI 2N)  
BEMKI TWO VICTOR (BEMKI 2V)  
TRASADINGEN TWO NOVEMBER (TRA 2N)  
TRASADINGEN TWO VICTOR (TRA 2V)**

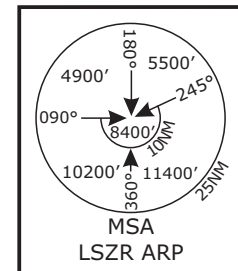
**RWYS 10, 28  
B-RNAV (RNP 5) DEPARTURES**  
FOR ROUTE CONTINUATION AFTER ALAGO  
REFER TO SID CHART NO. 4

**NOTE: Procedures for ACFT  
speed CAT A to C.**



**Initial climb clearance 5000'**

SID	RWY	ROUTING
<b>ALAGO 4N</b>	<b>10</b>	Climb straight ahead. At <b>1800'</b> turn LEFT (MAX IAS 160KT, MIM bank 20°), 255° track, intercept IAL LOC outbound to SITOR. At SITOR turn RIGHT (MAX IAS 180KT). Proceed via ZR500, ZR501, ENIBI to ALAGO.
<b>ALAGO 4V</b>	<b>28</b>	Climb straight ahead. Use IAL LOC outbound for track guidance. At SITOR turn RIGHT (MAX IAS 180KT). Proceed via ZR500, ZR501, ENIBI to ALAGO.
<b>BEMKI 2N</b>	<b>10</b>	Climb straight ahead. At <b>1800'</b> turn LEFT (MAX IAS 160KT, MIM bank 20°), 255° track, intercept IAL LOC outbound to SITOR. At SITOR turn RIGHT (MAX IAS 180KT). Proceed via ZR500, ZR502, OKPUS, TURSO, XASIS, EVTAT to BEMKI.
<b>BEMKI 2V</b>	<b>28</b>	Climb straight ahead. Use IAL LOC outbound for track guidance. At SITOR turn RIGHT (MAX IAS 180KT). Proceed via ZR500, ZR502, OKPUS, TURSO, XASIS, EVTAT to BEMKI.
<b>TRA 2N</b>	<b>10</b>	Climb straight ahead. At <b>1800'</b> turn LEFT (MAX IAS 160KT, MIM bank 20°), 255° track, intercept IAL LOC outbound to SITOR. At SITOR turn RIGHT (MAX IAS 180KT). Proceed via ZR500, ZR501, ENIBI, TINOX to TRA.
<b>TRA 2V</b>	<b>28</b>	Climb straight ahead. Use IAL LOC outbound for track guidance. At SITOR turn RIGHT (MAX IAS 180KT). Proceed via ZR500, ZR501, ENIBI, TINOX to TRA.



**LSZR/ACH** ALTENRHEIN

SID CHART NO. 2  
Revision 11 FEB 12

**B-RNAV (RNP 5) SID**  
**ST. GALLEN, SWITZERLAND**