

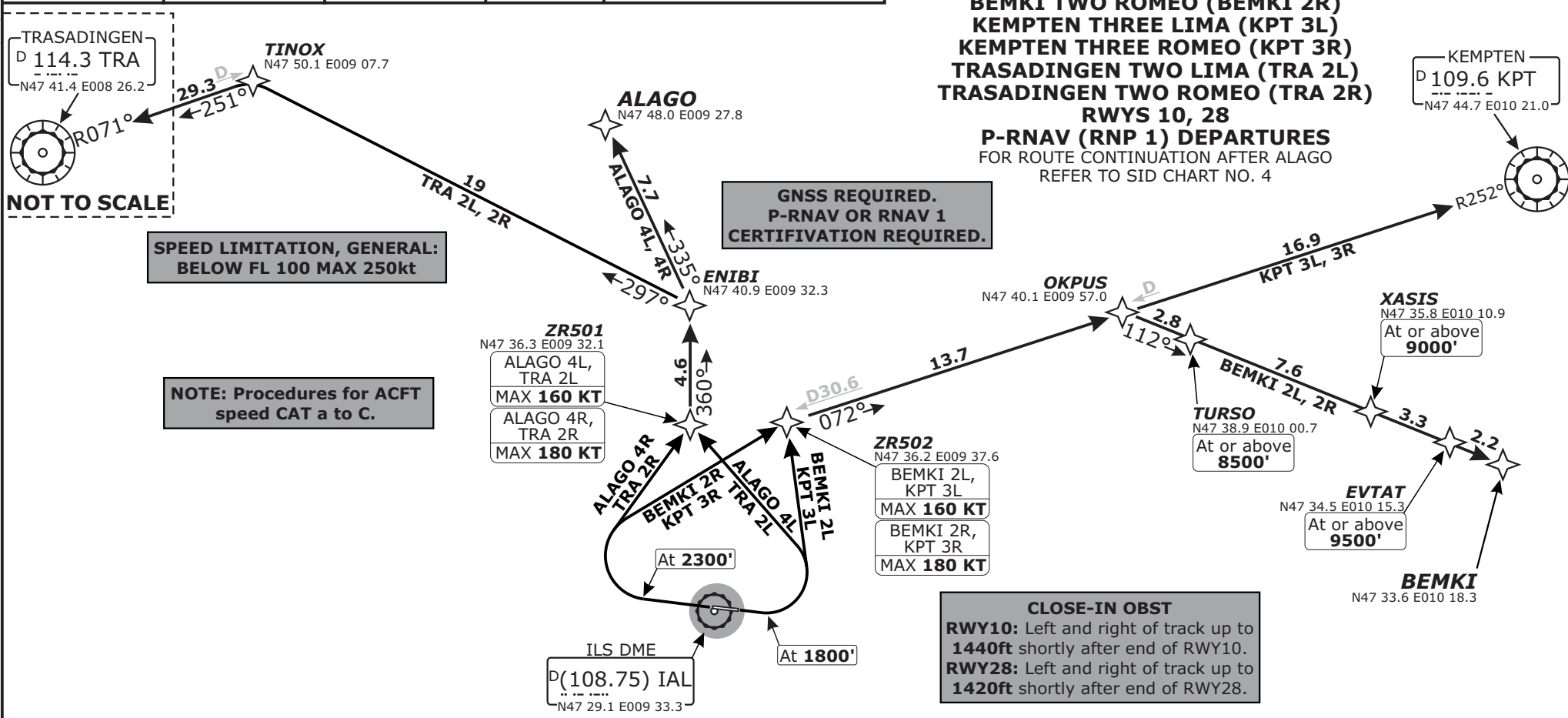
Valid for flight simulation use only - do not use for real life navigation

CHANGES: ARR frequency.

Swiss Radar LSAS_CTR 128.05	ZURICH Arrival LSZH_APP 131.15	ZURICH Arrival LSZH_A_APP 119.92	Apt Elev 1306'	Alt Set: hPa (IN on request) Trans level: by ATC Trans alt: 5000'
------------------------------------------	---------------------------------------------	-----------------------------------------------	--------------------------	-------------------------------------------------------------------------

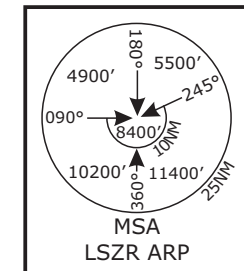
ALAGO FOUR LIMA (ALAGO 4L)
ALAGO FOUR ROMEO (ALAGO 4R)
BEMKI TWO LIMA (BEMKI 2L)
BEMKI TWO ROMEO (BEMKI 2R)
KEMPTEN THREE LIMA (KPT 3L)
KEMPTEN THREE ROMEO (KPT 3R)
TRASADINGEN TWO LIMA (TRA 2L)
TRASADINGEN TWO ROMEO (TRA 2R)

RWYS 10, 28
P-RNAV (RNP 1) DEPARTURES
 FOR ROUTE CONTINUATION AFTER ALAGO
 REFER TO SID CHART NO. 4



Initial climb clearance **5000'**

SID	RWY	ROUTING
ALAGO 4L	10	Climb straight ahead. At 1800' turn LEFT (MAX IAS 160KT) to ZR501. Proceed via ENIBI to ALAGO.
ALAGO 4R	28	Climb straight ahead. At 2300' turn RIGHT (MAX IAS 180KT) to ZR501. Proceed via ENIBI to ALAGO.
BEMKI 2L	10	Climb straight ahead. At 1800' turn LEFT (MAX IAS 160KT) to ZR502. Proceed via OKPUS, TURSO, XASIS, EVTAT to BEMKI.
BEMKI 2R	28	Climb straight ahead. At 2300' turn RIGHT (MAX IAS 180KT) to ZR502. Proceed via OKPUS, TURSO, XASIS, EVTAT to BEMKI.
KPT 3L	10	Climb straight ahead. At 1800' turn LEFT (MAX IAS 160KT) to ZR502. Proceed via OKPUS to KPT.
KPT 3R	28	Climb straight ahead. At 2300' turn RIGHT (MAX IAS 180KT) to ZR502. Proceed via OKPUS to KPT.
TRA 2L	10	Climb straight ahead. At 1800' turn LEFT (MAX IAS 160KT) to ZR501. Proceed via ENIBI, TINOX to TRA.
TRA 2R	28	Climb straight ahead. At 2300' turn RIGHT (MAX IAS 180KT) to ZR501. Proceed via ENIBI, TINOX to TRA.



LSZR/ACH ALTENRHEIN

SID CHART NO. 1
Revision 11 FEB 12

ST. GALLEN, SWITZERLAND

P-RNAV (RNP 1) SID

© VAACC Switzerland

http://www.vaacc.ch/

charts@vaacc.ch