

LSGG/GVA

GENEVA, SWITZERLAND

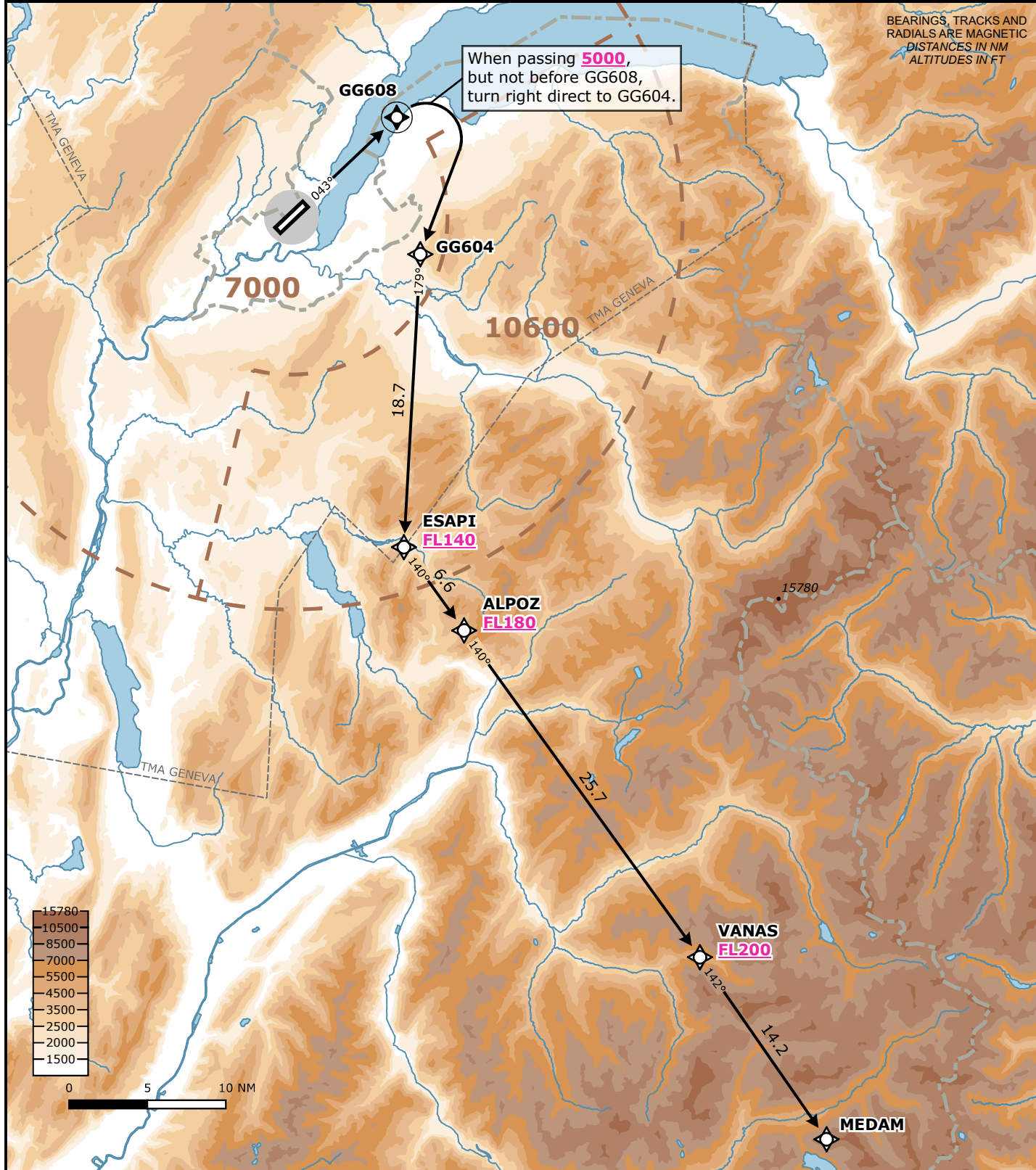
SID CHART NO. 04-07
Revision 31 OCT 24

RNAV 1 SID

RWY 04 MEDAM 1N

| Frequencies | | Navigation Specification | | MSA LSGG ARP Outer Circle: 25 NM Inner Circle: 10 NM | | | |
|------------------|------------------|--------------------------|--|--|--|-----------------|------------------|
| Swiss Radar | 135.015 | 134.850 | RNAV 1 | | | | |
| | 128.905 | 124.225 | GNSS or DME/DME/IRU required. | | | | |
| | 134.030 | - | <p style="text-align: center;">Initial climb clearance FL090</p> <table border="1"> <tr> <td>AD ELEV 1411 ft</td> <td>TRANS LVL by ATC</td> <td>TRANS ALT 7000 ft</td> </tr> </table> | | | AD ELEV 1411 ft | TRANS LVL by ATC |
| AD ELEV 1411 ft | TRANS LVL by ATC | TRANS ALT 7000 ft | | | | | |
| Geneva Arrival | 136.255 | - | | | | | |
| Geneva Departure | 119.530 | - | | | | | |
| Geneva ATIS | 135.580 | - | | | | | |

Valid for flight simulation use only - do not use for real life navigation



| RWY | SID | Lateral Routing | Vertical Routing |
|-----|----------|--|--|
| 04 | MEDAM 1N | Climb on track 043°. When passing 5000 ft, but not before GG608, turn right direct to GG604. Proceed via ESAPI, ALPOZ, VANAS to MEDAM. | Initial climb clearance FL090. Cross ESAPI at FL140 or above, ALPOZ at FL180 or above and VANAS at FL200 or above. |

Changes: Complete revision