

LSGG/GVA

GENEVA, SWITZERLAND

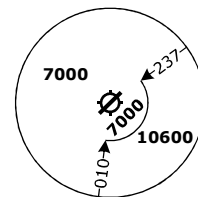
SID CHART NO. 04-06
Revision 31 OCT 24

RNAV 1 SID

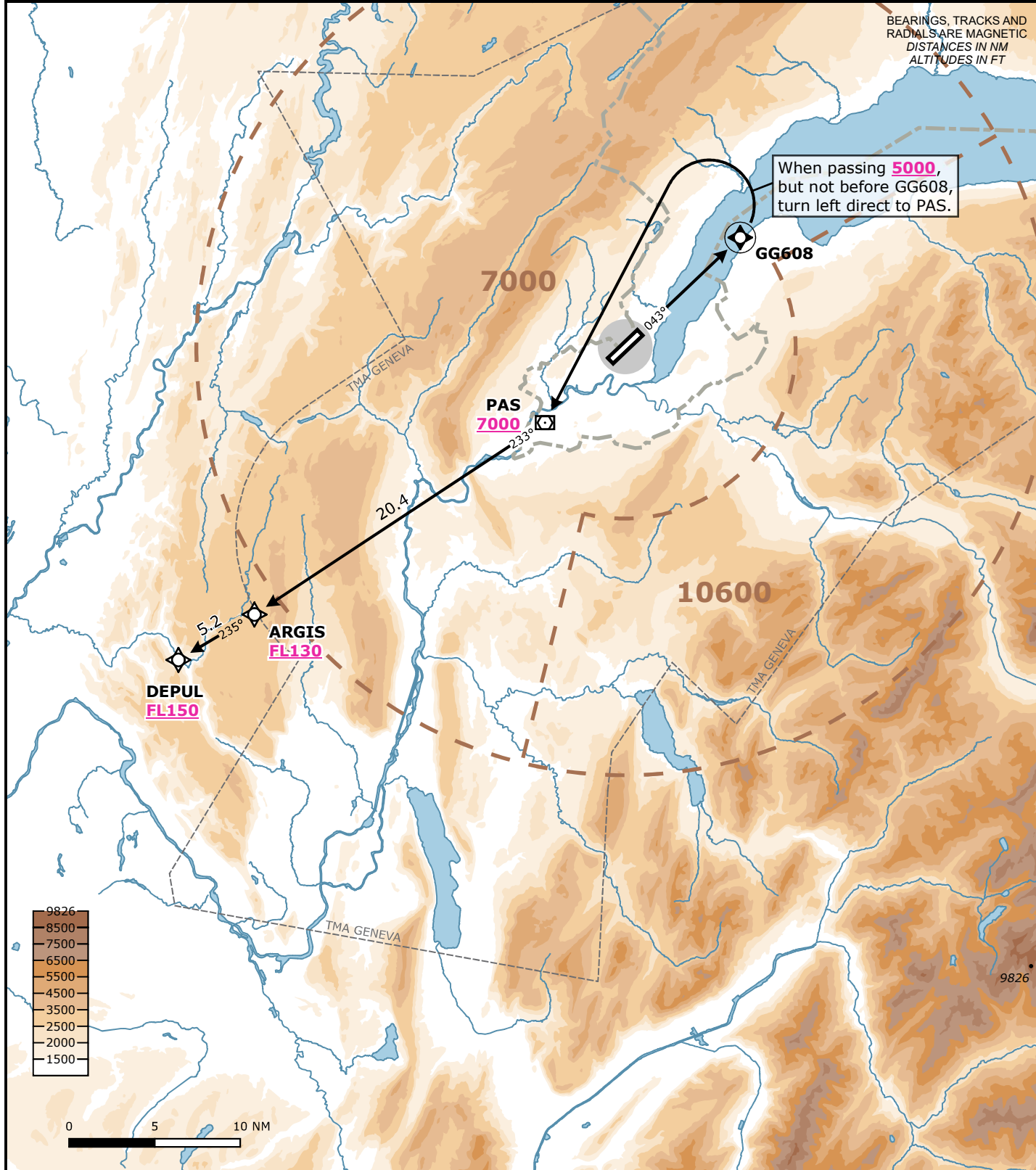
RWY 04 **DEPUL 1T**

Frequencies		Navigation Specification		
Swiss Radar	135.015	134.850	RNAV 1	
	128.905	124.225	GNSS or DME/DME/IRU required.	
	134.030	-		
Geneva Arrival	136.255	-	Initial climb clearance FL090	
Geneva Departure	119.530	-		
Geneva ATIS	135.580	-		
		AD ELEV 1411 ft	TRANS LVL by ATC	TRANS ALT 7000 ft

MSA LSGG ARP
Outer Circle: 25 NM
Inner Circle: 10 NM



Valid for flight simulation use only - do not use for real life navigation



BEARINGS, TRACKS AND RADIALS ARE MAGNETIC
DISTANCES IN NM
ALTITUDES IN FT

RWY	SID	Lateral Routing	Vertical Routing
04	DEPUL 1T	Climb on track 043°. When passing 5000 ft, but not before GG608, turn left direct to PAS. Proceed via ARGIS to DEPUL.	Initial climb clearance FL090. Cross PAS at 7000 ft or above. If cleared FL150 or above, cross ARGIS at FL130 or above, DEPUL at FL150 or above.

Changes: Complete revision