

LSGG/GVA

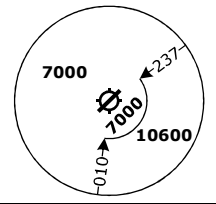
GENEVA, SWITZERLAND

SID CHART NO. 04-02
Revision 31 OCT 24

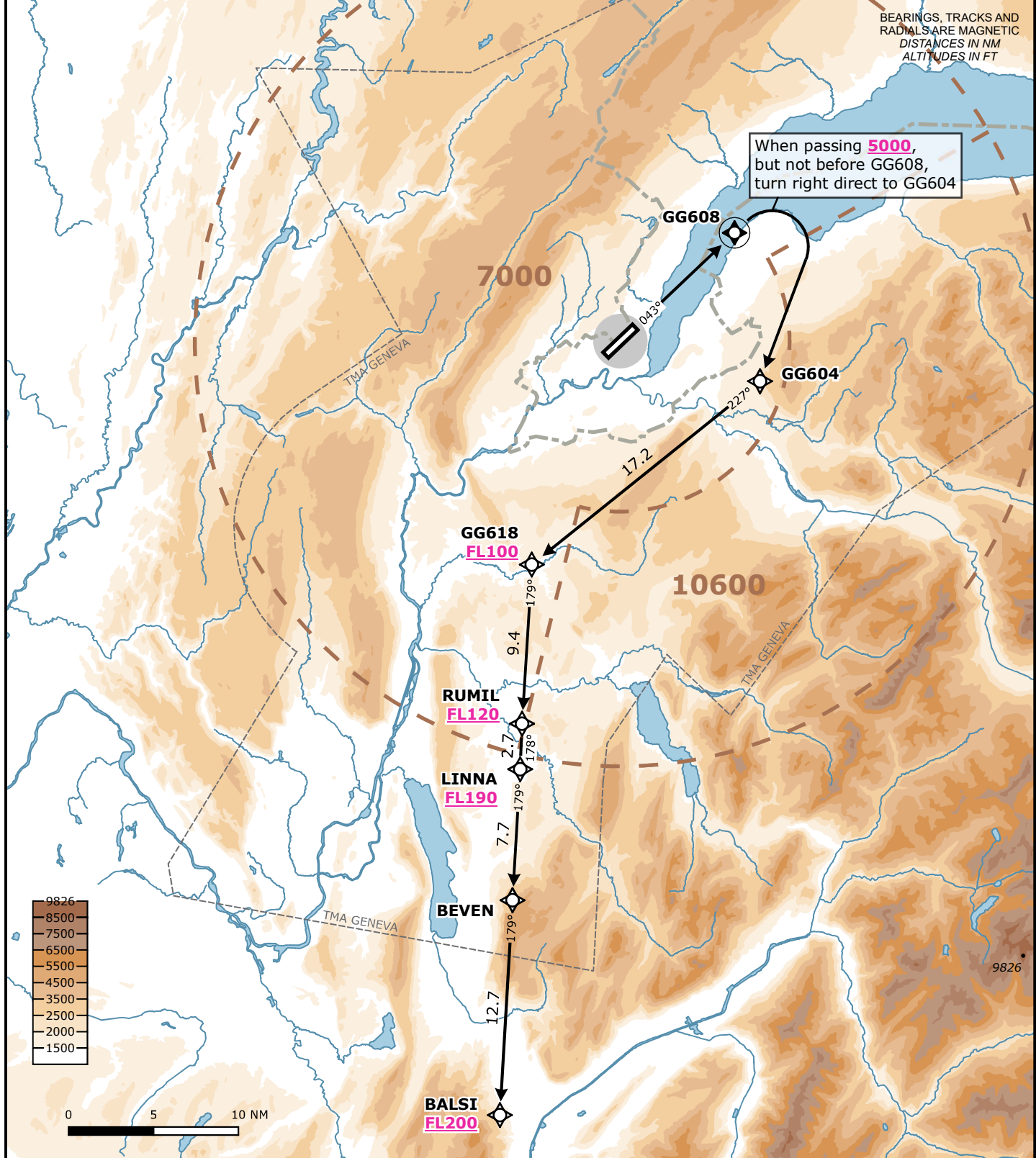
RNAV 1 SID

RWY 04 **BALSI 1N**

Frequencies		Navigation Specification			MSA LSGG ARP Outer Circle: 25 NM Inner Circle: 10 NM
Swiss Radar	135.015 134.850 128.905 124.225 134.030 -	RNAV 1 GNSS or DME/DME/IRU required.			
Geneva Arrival	136.255 -	Initial climb clearance FL090			
Geneva Departure	119.530 -				
Geneva ATIS	135.580 -	AD ELEV 1411 ft	TRANS LVL by ATC	TRANS ALT 7000 ft	



Valid for flight simulation use only - do not use for real life navigation



BEARINGS, TRACKS AND RADIALS ARE MAGNETIC
DISTANCES IN NM
ALTITUDES IN FT

When passing 5000, but not before GG608, turn right direct to GG604

RWY	SID	Lateral Routing	Vertical Routing
04	BALSIS 1N	Climb on track 043°. When passing 5000 ft, but not before GG608, turn right direct to GG604. Proceed via GG618, RUMIL, LINNA, BEVEN to BALSIS.	Initial climb clearance FL090. Cross GG618 at FL100 or above, RUMIL at FL120 or above, LINNA at FL190 or above, and BALSIS at FL200 or above.

Changes: Complete revision