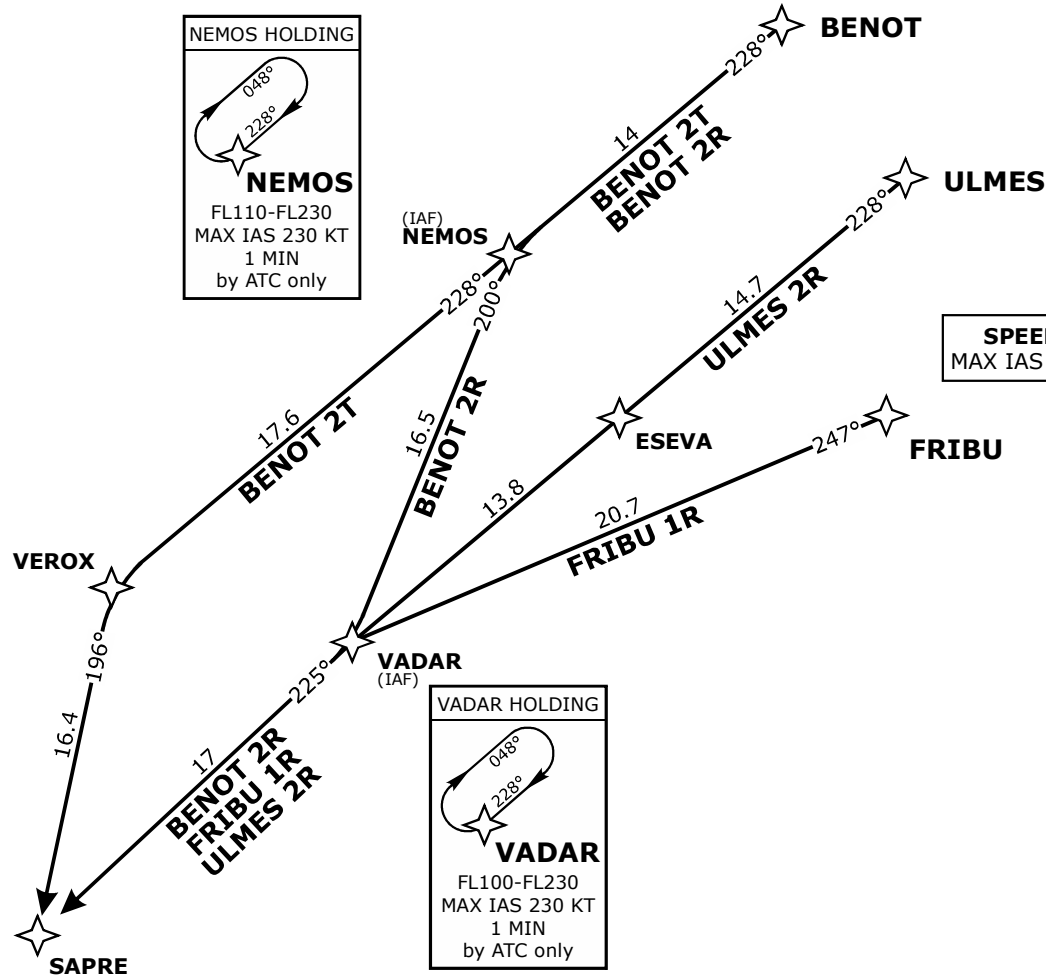


# BENOT, FRIBU, ULMES

## RNAV 1 ARRIVALS

### RWY 22



**GEVEA HOLDING**  
 025°  
 205°  
**GEVEA**  
 7000-FL150  
 MAX IAS 230 KT  
 1 MIN

**SAPRE HOLDING**  
 043°  
 223°  
**SAPRE**  
 7000-FL230  
 MAX IAS 230 KT  
 1 MIN



DISTANCES IN NM  
 ALTITUDES IN FT

Altitude and speed restrictions see graphical chart

STAR	ROUTING
<b>BENOT 2R</b>	BENOT - NEMOS - VADAR - SAPRE
<b>BENOT 2T</b>	BENOT - NEMOS - VEROX - SAPRE
<b>FRIBU 1R</b>	FRIBU - VADAR - SAPRE
<b>ULMES 2R</b>	ULMES - ESEVA - VADAR - SAPRE

Frequencies	
Swiss Radar	128.905 124.225 134.850 135.015
Geneva Arrival	136.255 -
Geneva Final	120.305 -
Geneva ATIS	135.580 -
AD ELEV 1411ft	TRANS LVL by ATC