

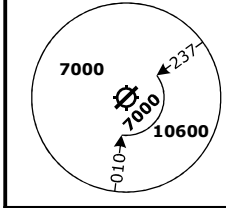
# BENOT, FRIBU, ULMES

## RNAV 1 ARRIVALS

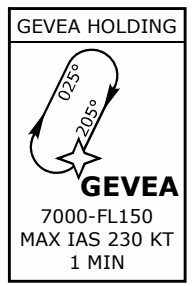
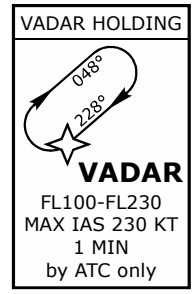
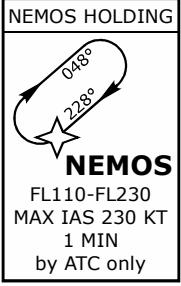
### RWY 04

**NOT TO SCALE**

**MSA LSGG ARP**  
Outer Circle: 25 NM  
Inner Circle: 10 NM

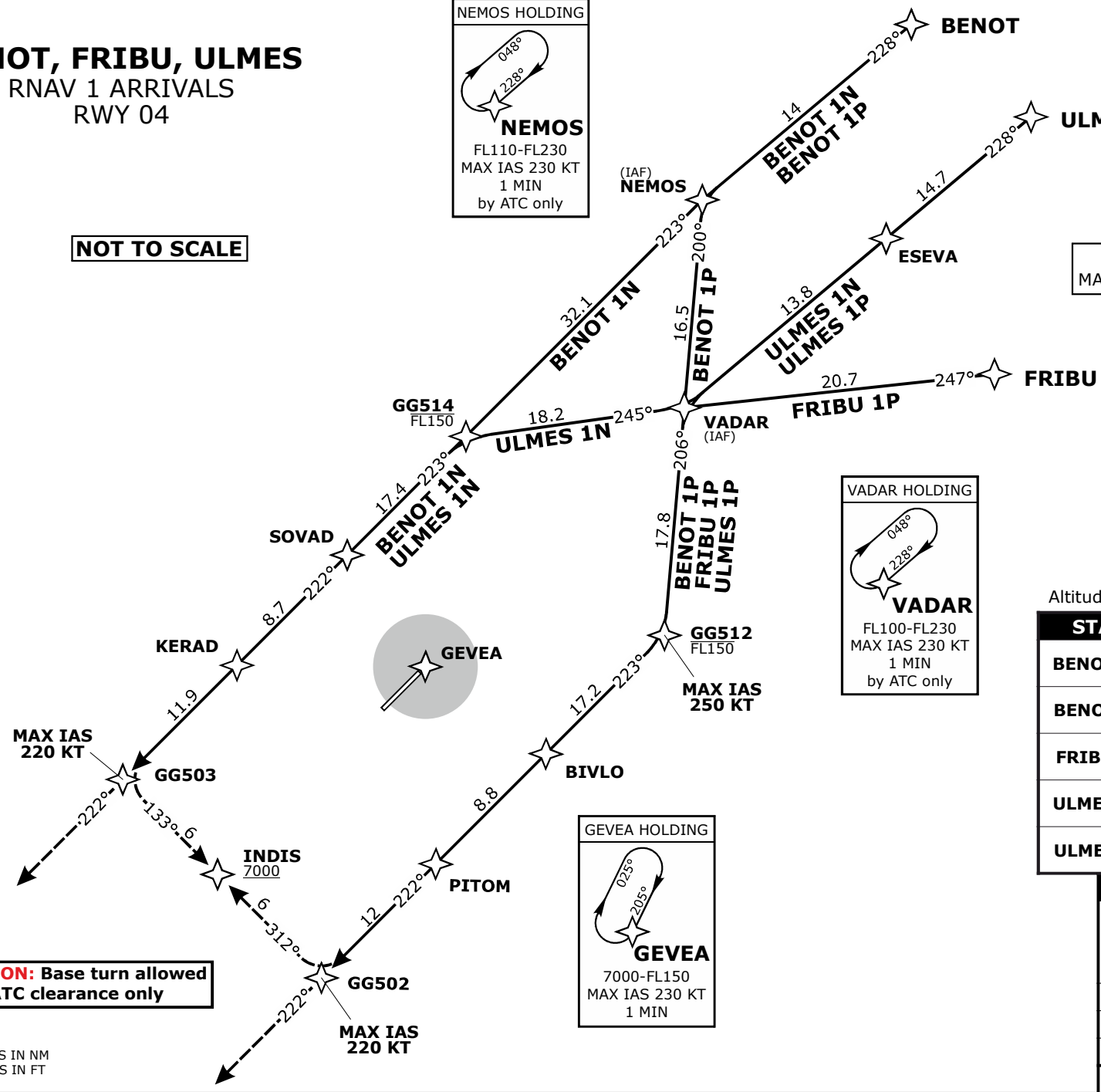


**SPEED RESTRICTION**  
MAX IAS 250 KT below FL100



**CAUTION: Base turn allowed with ATC clearance only**

DISTANCES IN NM  
ALTITUDES IN FT



Altitude and speed restrictions see graphical chart

STAR	ROUTING
<b>BENOT 1N</b>	BENOT - NEMOS - GG514 - SOVAD - KERAD - GG503
<b>BENOT 1P</b>	BENOT - NEMOS - VADAR - GG512 - BIVLO - PITOM - GG502
<b>FRIBU 1P</b>	FRIBU - VADAR - GG512 - BIVLO - PITOM - GG502
<b>ULMES 1N</b>	ULMES - ESEVA - VADAR - GG514 - SOVAD - KERAD - GG503
<b>ULMES 1P</b>	ULMES - ESEVA - VADAR - GG512 - BIVLO - PITOM - GG502

Frequencies		
Swiss Radar	128.905	124.225
Swiss Radar	134.850	135.015
Geneva Arrival	136.255	-
Geneva Final	120.305	-
Geneva ATIS	135.580	-
AD ELEV 1411ft	TRANS LVL by ATC	