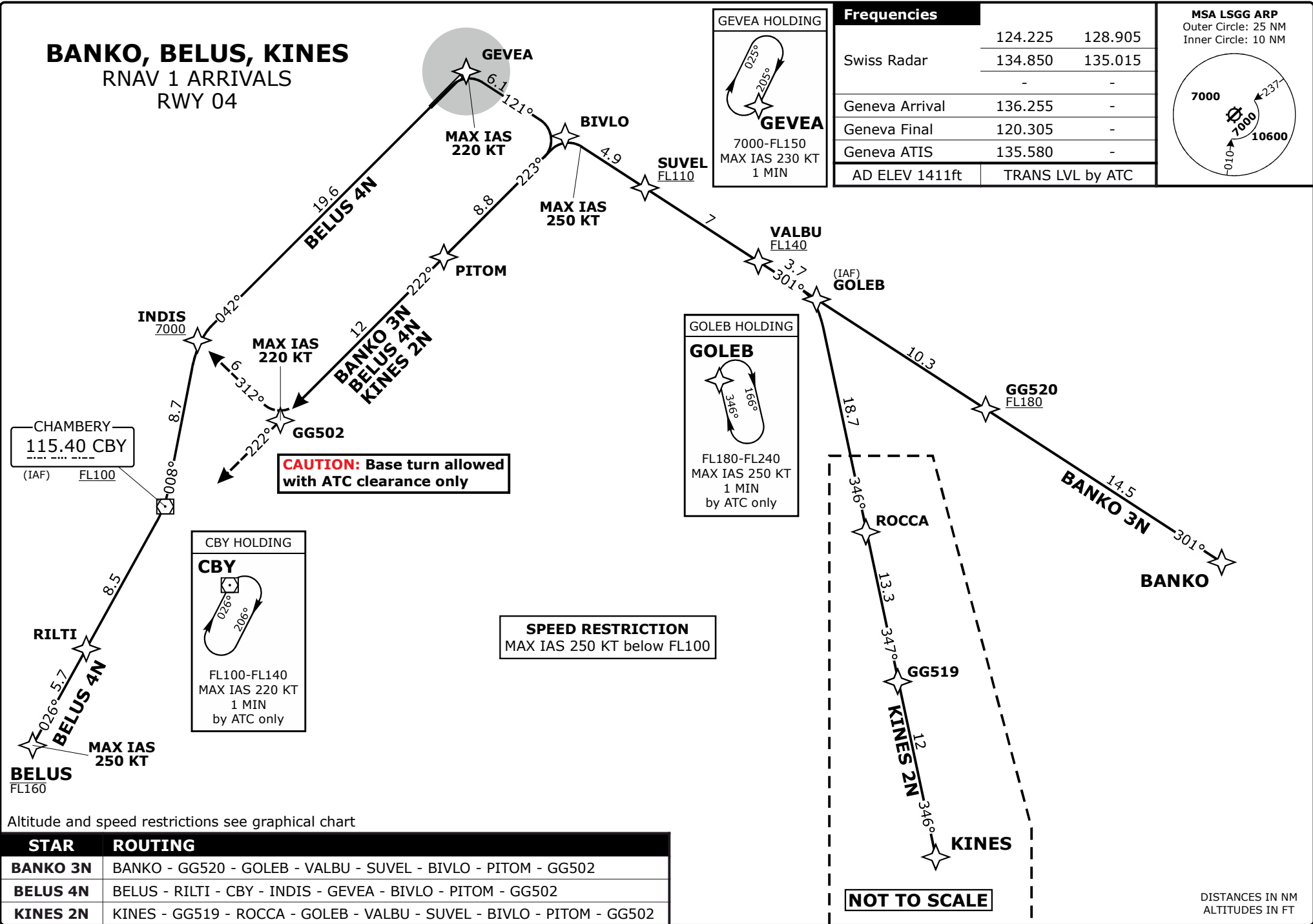


BANKO, BELUS, KINES

RNAV 1 ARRIVALS

RWY 04



GEVEA HOLDING

GEVEA
7000-FL150
MAX IAS 230 KT
1 MIN

Frequencies

Swiss Radar	124.225	128.905
Geneva Arrival	136.255	-
Geneva Final	120.305	-
Geneva ATIS	135.580	-
AD ELEV 1411ft	TRANS LVL by ATC	

MSA LSGG ARP
Outer Circle: 25 NM
Inner Circle: 10 NM

GOLEB HOLDING

GOLEB
FL180-FL240
MAX IAS 250 KT
1 MIN
by ATC only

SPEED RESTRICTION
MAX IAS 250 KT below FL100

CAUTION: Base turn allowed with ATC clearance only

CHBY HOLDING

CHBY
FL100-FL140
MAX IAS 220 KT
1 MIN
by ATC only

Altitude and speed restrictions see graphical chart

STAR	ROUTING
BANKO 3N	BANKO - GG520 - GOLEB - VALBU - SUVEL - BIVLO - PITOM - GG502
BELUS 4N	BELUS - RILTI - CHBY - INDIS - GEVEA - BIVLO - PITOM - GG502
KINES 2N	KINES - GG519 - ROCCA - GOLEB - VALBU - SUVEL - BIVLO - PITOM - GG502

NOT TO SCALE

DISTANCES IN NM
ALTITUDES IN FT