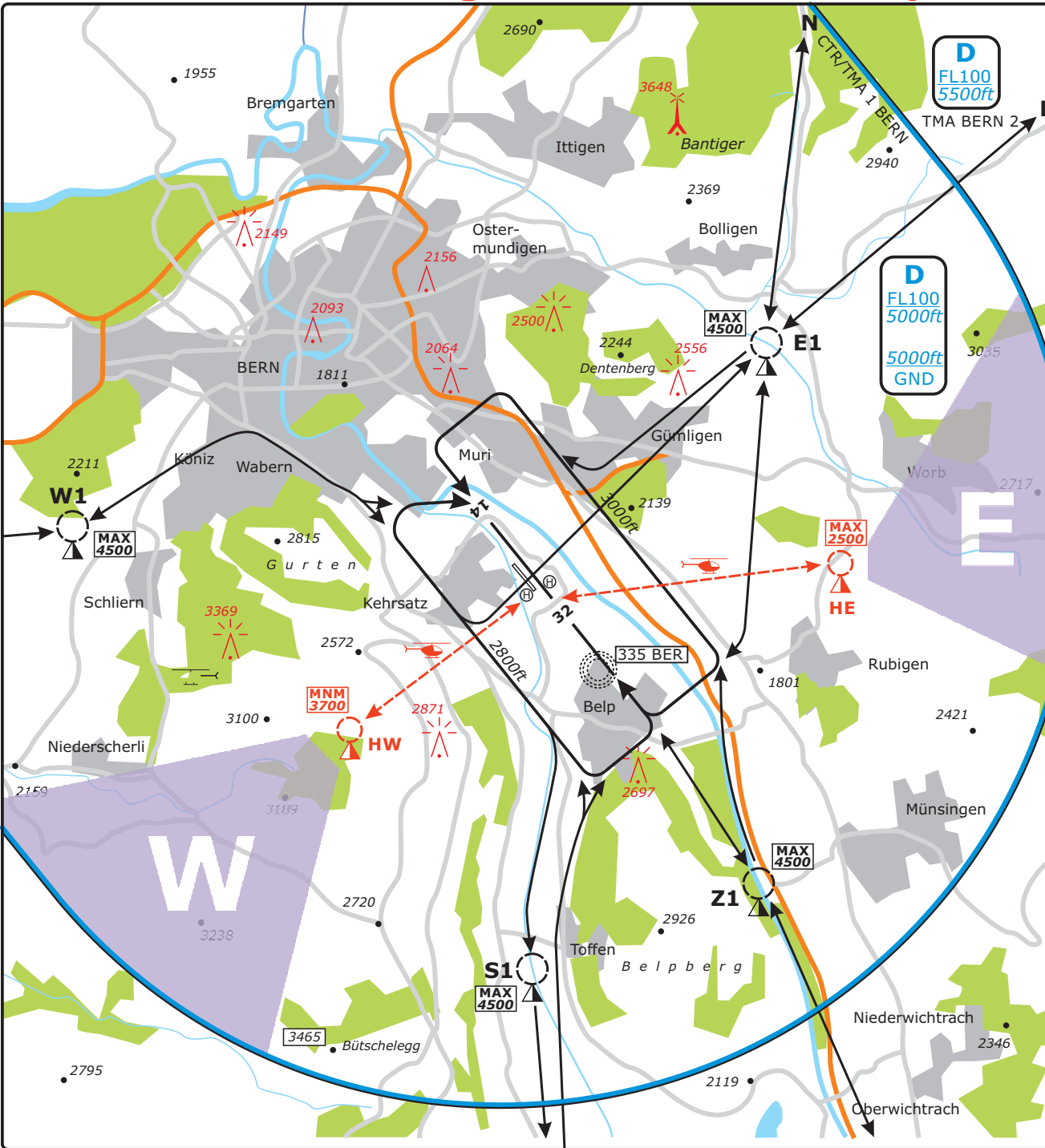


Valid for flight simulation use only - do not use for real life navigation



ATIS BERN abhören (ATIS Kennung bestätigen)
MNT BERN ATIS (confirm ATIS designator)

ARR / DEP LSZB: TMA BERN 1 + 2 meiden
avoid TMA BERN 1 + 2

MAX ALT innerhalb CTR: 4500ft
MAX ALT within CTR: 4500ft

Beim Anfordern der Rollfreigabe muss der
vorgesehene Flugweg (z.B. ready for taxi
Route NOVEMBER) angegeben werden.
Das Verlassen der CTR muss gemeldet werden
(z.B. leaving CTR direction NOVEMBER).

When ready for taxi transmit outbound route
(e.g. ready for taxi Route NOVEMBER).
Report when leaving CTR
(e.g. leaving CTR direction NOVEMBER).

Abflugrouten / Departure routes:



RWY 14	RWY 32
NOVEMBER: E1 - N	NOVEMBER: E1 - N (via overhead)
ECHO: E1 - E	ECHO: E1 - E (via overhead)
ZULU: Z1 - Z	
SIERRA: S1 - S	SIERRA: S1 - S
WHISKEY: W1 - W	WHISKEY: W1 - W

Mit dem ersten Funkkontakt ist der vorgesehene
Anflugweg zu melden (z.B. Route WHISKEY).


The intended routing (e.g. Route WHISKEY)
shall be submitted with the first RDO contact.

Anflugrouten / Arrival routes:

NOVEMBER: N - E1
ECHO: E - E1
ZULU: Z - Z1
SIERRA: S - ABM S1
WHISKEY: W - W1

  Nur INBD obligatorisch
Only INBD compulsory

HE 46° 54' 59" N / 007° 33' 57" E **WIL R223 D21.1**
HW 46° 53' 23" N / 007° 27' 41" E **FRI R057 D11.8**

 HEL Routen
HEL routes

Transition Level: by ATC

DISTANCES IN NM
ALTITUDES IN FT

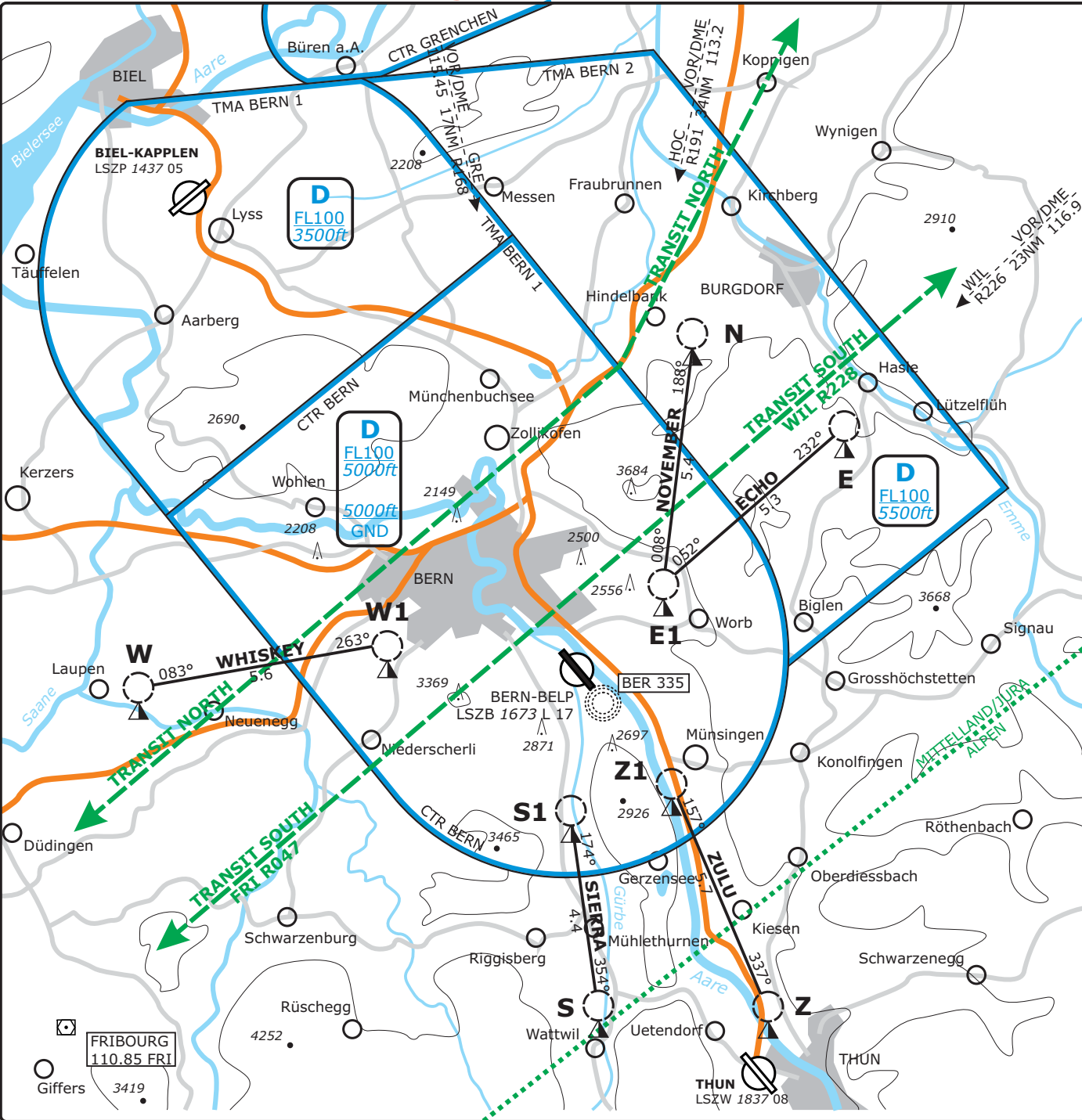
LSZB/BRN
BERN, SWITZERLAND

VAC CHART NO.2
Revision 17 SEPT 16

VAG
VISUAL APPROACH

SWISS Information LSAS_I_CTR 124.70	BERN ATIS LSZB, ATIS 125.12	BERN Tower LSZB, TWR 121.02	BERN Arrival LSZB, APP 127.32	SWISS Radar LSAS_CTR 128.05	Apt Elev 1673
---	-----------------------------------	-----------------------------------	-------------------------------------	-----------------------------------	-------------------------

Valid for flight simulation use only - do not use for real life navigation



VFR TRANSIT Routen
VFR TRANSIT Routes

Funkkontakt obligatorisch TWR < 5000 ft
RDO contact compulsory APP > 5000 ft

Erster Funkkontakt 5 min vor Einflug in CTR
First RDO contact 5 min prior CTR

Mit dem ersten Funkkontakt ist der vorgesehene
Anflugweg zu melden (z.B. Route WHISKEY).

The intended routing (e.g. Route WHISKEY)
shall be submitted with the first RDO contact.

Obligatorisch nur für Anflug
Compulsory for ARR only

N	47° 02' 16" N / 007° 33' 39" E	WIL R241 D16.5
E	47° 00' 17" N / 007° 38' 51" E	WIL R227 D15.0
E1	46° 56' 45" N / 007° 32' 51" E	WIL R228 D20.3
Z	46° 46' 48" N / 007° 36' 12" E	WIL R209 D26.9
Z1	46° 52' 03" N / 007° 32' 52" E	WIL R220 D23.8
S	46° 46' 43" N / 007° 30' 38" E	FRI R090 D11.9
S1	46° 51' 23" N / 007° 29' 47" E	FRI R069 D12.2
W	46° 54' 16" N / 007° 15' 43" E	FRI R014 D7.8
W1	46° 54' 59" N / 007° 23' 50" E	FRI R042 D11.0

Transition Level: by ATC

DISTANCES IN NM
ALTITUDES IN FT

LSZB/BRN

BERN ATIS

BERN Tower

BERN Arrival

SWISS Radar

VFR AREA

SWISS Information
LSAS, I_CTR
124.70

BERN ATIS
LSZB, ATIS
125.12

BERN Tower
LSZB, TWR
121.02

BERN Arrival
LSZB, APP
127.32

SWISS Radar
LSAS, CTR
128.05

Apt Elev
1673

VAC CHART NO.1
Revision 17 SEPT 16