

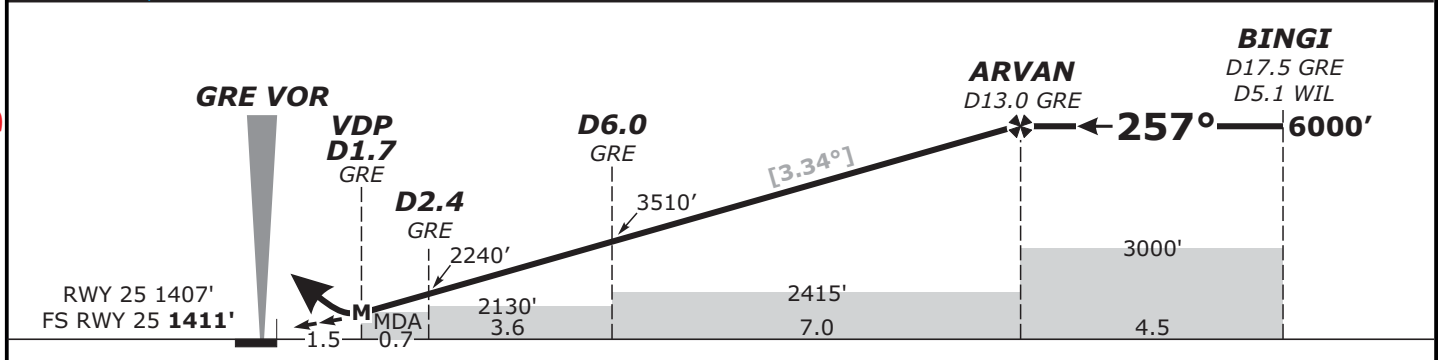
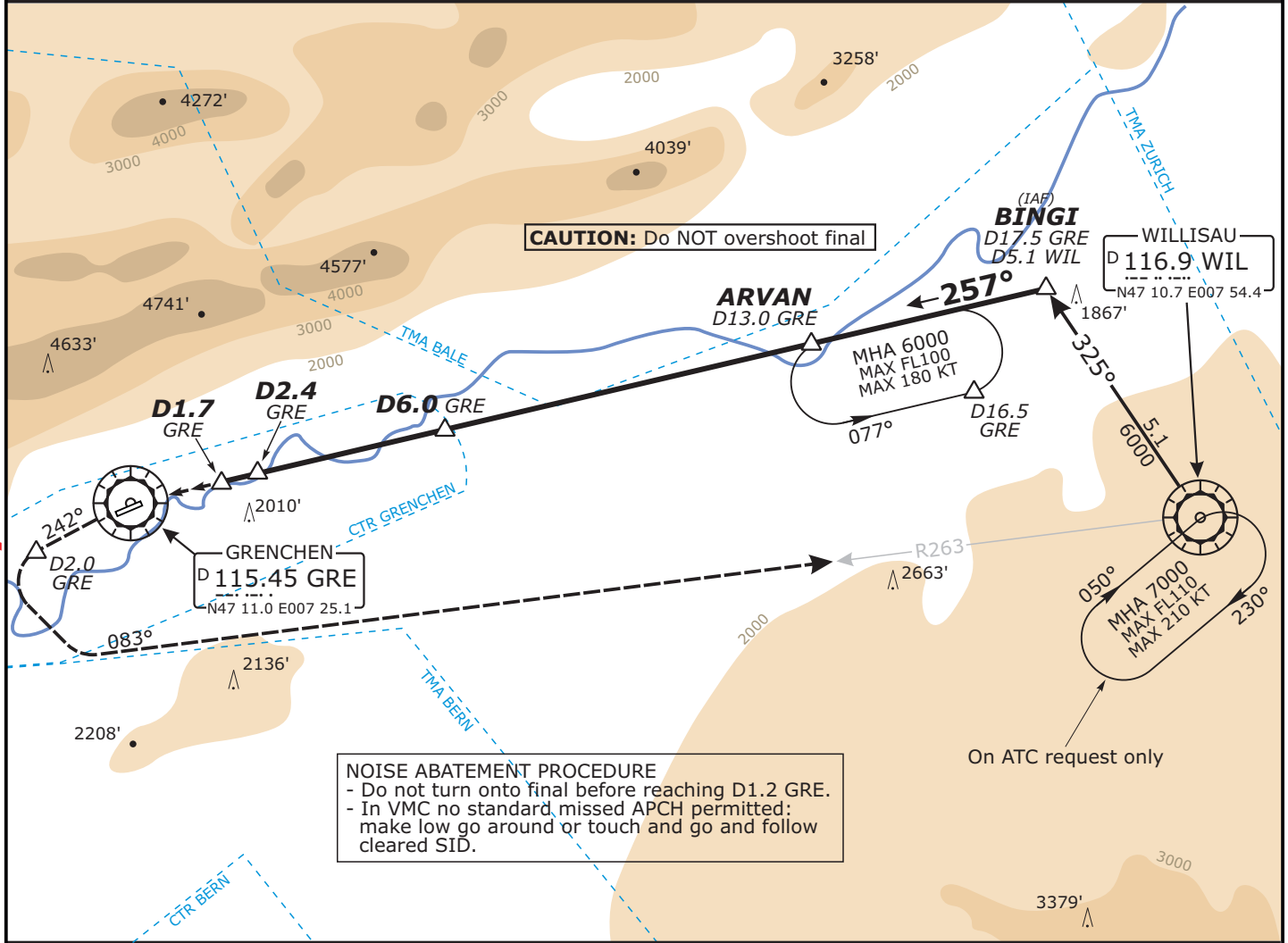
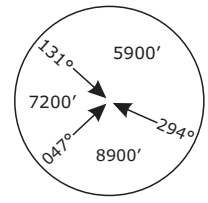
LSZG/ZHI GRENCHEN

APP CHART NO.1
Revision 06 FEB 12

GRENCHEN, SWITZERLAND CAT A & B VOR DME Rwy 25

Valid for flight simulation use only - do not use for real life navigation

SWISS Radar LSAS_CTR 128.05		BERN Arrival LSZB_APP 127.32		GRENCHEN Tower LSZG_TWR 120.1	
VOR GRE 115.45	Final Apch Crs 256°	Procedure Alt ARVAN 6000' (4589')	MDA(H) 2010' (599')	Apt Elev 1411' RWY 1407' FS RWY 1411'	
MISSED APCH: Climb STRAIGHT AHEAD to GRE VOR. At GRE VOR turn LEFT to intercept R-242 outbound GRE VOR. At D2.0 GRE turn LEFT to intercept R-263 WIL (MAX IAS 150kts during turn). Proceed to WIL. Initial climb clearance 6000'.					
Alt Set: hPa		Rwy Elev: 50 hPa		Trans level: By ATC	
				Trans alt: 6000'	



Flight Simulator-OPS		CIRCLE-TO-LAND TO RWY 07		Gnd speed-Kts					
STRAIGHT-IN LANDING RWY 25		Not authorized North of runway		70 90 100 120 140 160					
① MDA(H): 2010' (1201')				Descent Gradient 5.84% or Descent Angle 3.34°					
② VIS 1900m				MAP at D1.7 GRE					
NOT APPLICABLE		NOT APPLICABLE		① CAUTION: MDA 4190' when BB3 active. (for more information about BB sectors, see VAC chart)					
A	CAT A	100	2270' (859')	② Circling: - avoid overflying villages - whenever possible, circling ALT 3000ft on outer downwind					
B	CAT B	135	2320' (909')						
C	CAT C								
D	CAT D								

CHANGES: MDA, Missed Approach procedure.