

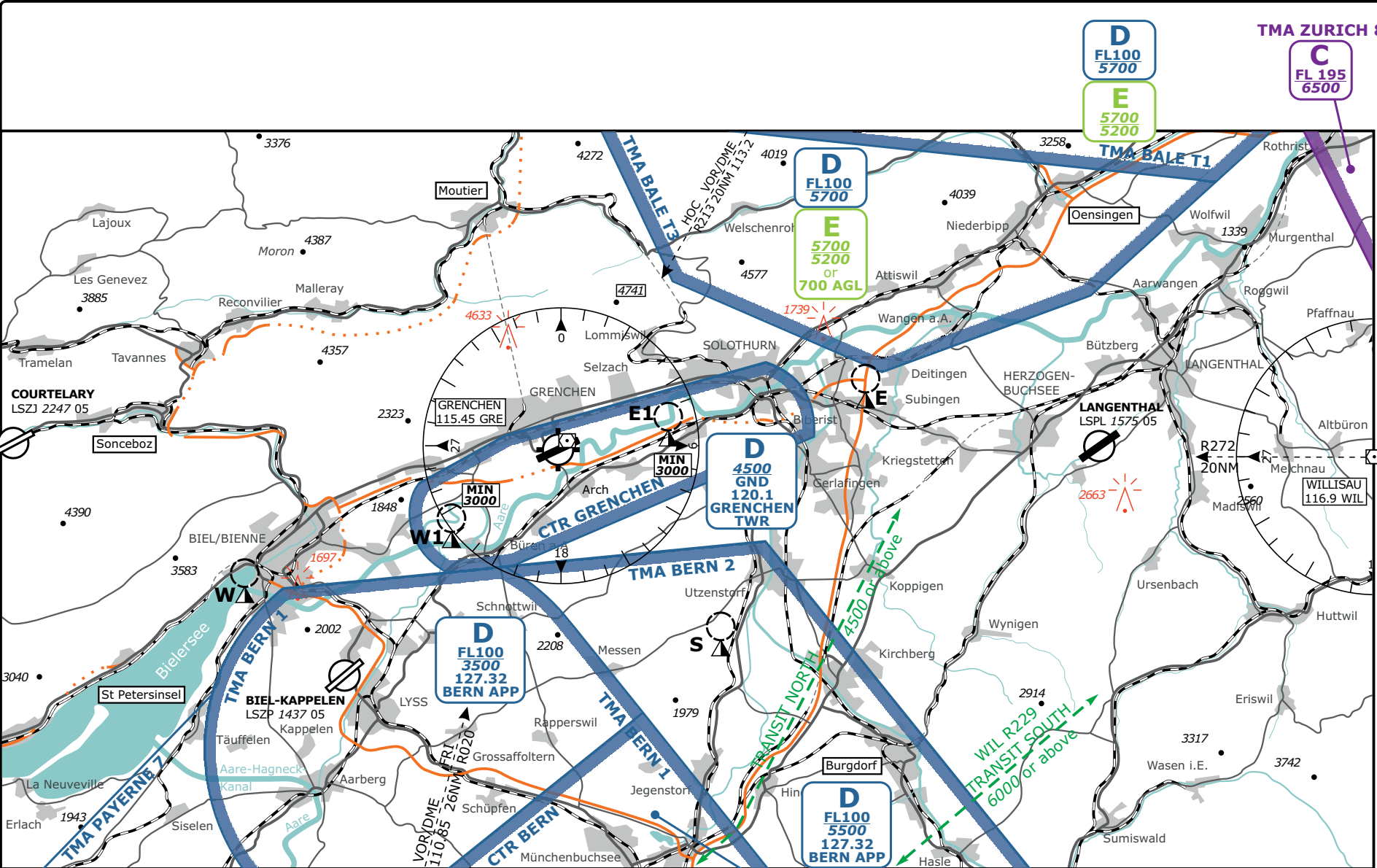
Valid for flight simulation use only - do not use for real life navigation

CHANGES: VRP, Typo, Radials

© VACC Switzerland

http://www.vacc.ch/

charts@vacc.ch



SWISS Radar LSAS_CTR 128.05	SWISS Information LSAS_I_CTR 119.17	GRENCHEM Tower LSZG_TWR 120.10	Apt Elev 1411'
-----------------------------------	---	--------------------------------------	--------------------------

LSZG/ZHI
GRENCHEM, SWITZERLAND
VAC CHART NO.1
Revision 15 JUL 14

ATIS GRENCHEM abhören (ATIS Kennung bestätigen)
MNT GRENCHEM ATIS (confirm ATIS designator)

Erster Funkkontakt 5 min vor Einflug in CTR oder
First RDO contact 5 min prior entering CTR or

- Moutier
- Oensingen
- Sonceboz
- Burgdorf
- St Petersinsel

Obligatorisch nur für Anflug
Compulsory for ARR only

TMA VFR TRANSIT Routen
TMA VFR TRANSIT routes

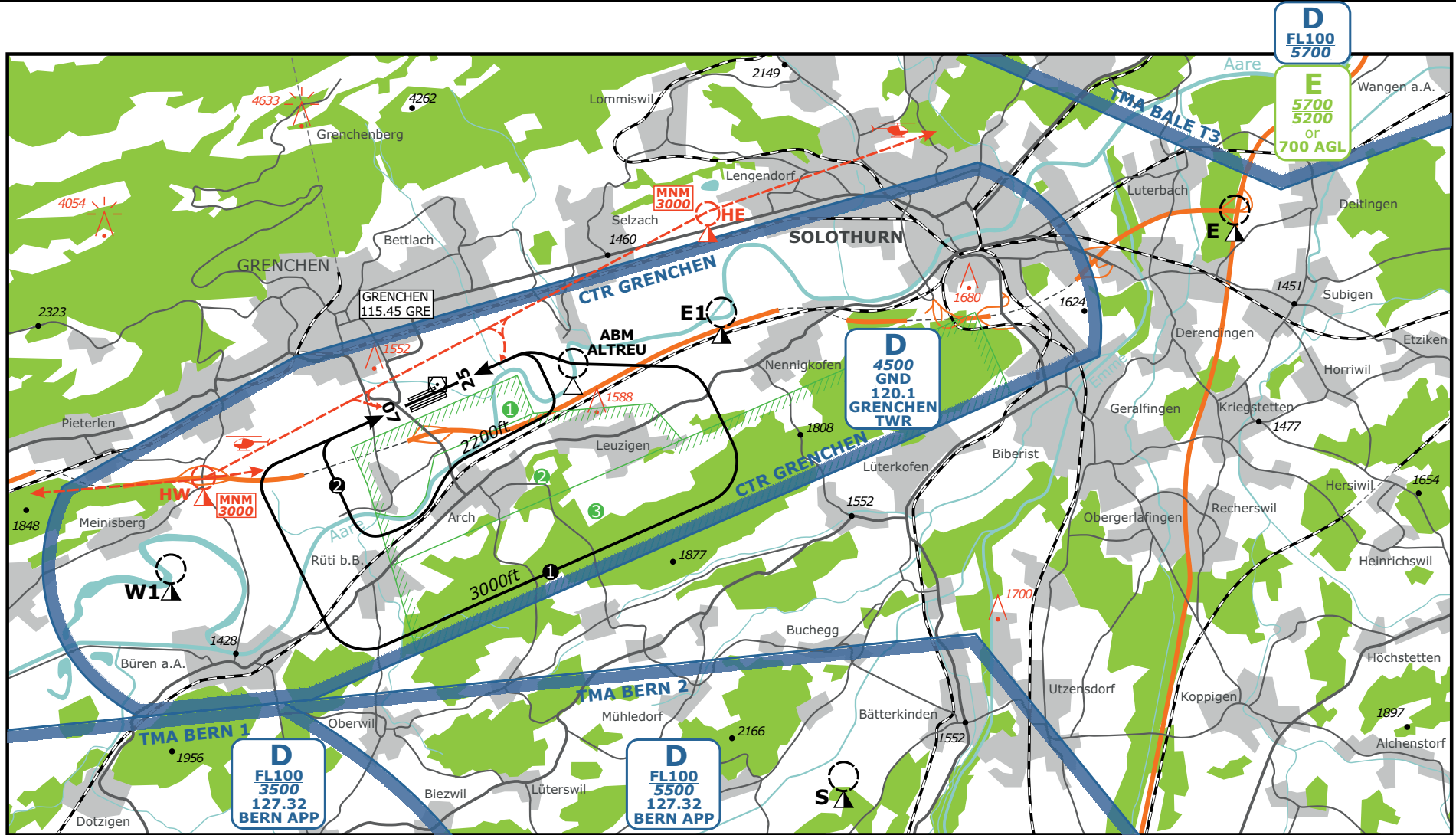
D
FL 100
5000
127.32
BERN APP

5000
GND
121.02
BERN TWR

- W** 47° 07' 48" N / 007° 13' 47" E **GRE R248 D8.4**
- W1** 47° 09' 16" N / 007° 21' 26" E **GRE R235 D3.0**
- E** 47° 12' 38" N / 007° 36' 00" E **GRE R077 D7.6**
- E1** 47° 11' 38" N / 007° 28' 57" E **GRE R076 D2.7**
- S** 47° 07' 22" N / 007° 30' 44" E **GRE R133 D5.3**

Höhen über Meer in ft; Höhen über Grund in ft
Altitudes in ft; Heights in ft

AREA



LSZG/ZHI	GRENCHEN, SWITZERLAND	VAC CHART NO.2
SWISS Radar LSAS_CTR 128.05	SWISS Information LSAS_I_CTR 119.17	GRENCHEN Tower LSZG_TWR 120.10
		Apt Elev 1411'
		Revision 15 JUL 14

ATIS GRENCHEIN abhören
MNT GRENCHEIN ATIS

(ATIS Kennung bestätigen)
(confirm ATIS designator)

Obligatoirisch nur für Anflug
Compulsory for ARR only

SECTOR BRAVO BRAVO
① GND / 4500
② 2700 / 4500
③ 3500 / 4500

Einflug verboten wenn aktiv
Entering prohibited when ACT

An- und Abflüge von/nach Süden erfolgen via
Queranflug ÄUSSERE PLATZRUNDE
For ARR and DEP from/to south proceed via
base/cross-wind OUTER CIRCUIT

- ① Einziehfahwerk und mehrmotorige ACFT
Retractable LDG gear and multi-engine ACFT
- ② ACFT mit festem Fahrwerk
Fixed LDG gear ACFT

Höhen über Meer in ft;
Höhen über Grund in ft
Altitudes in ft;
Heights in ft

HEL Routen / HEL Routes