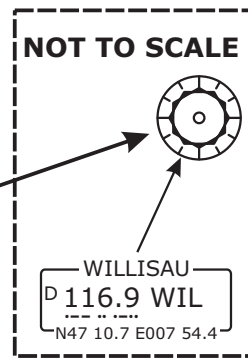
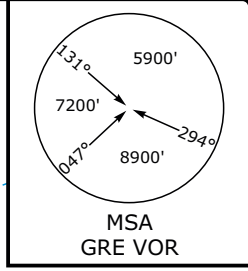
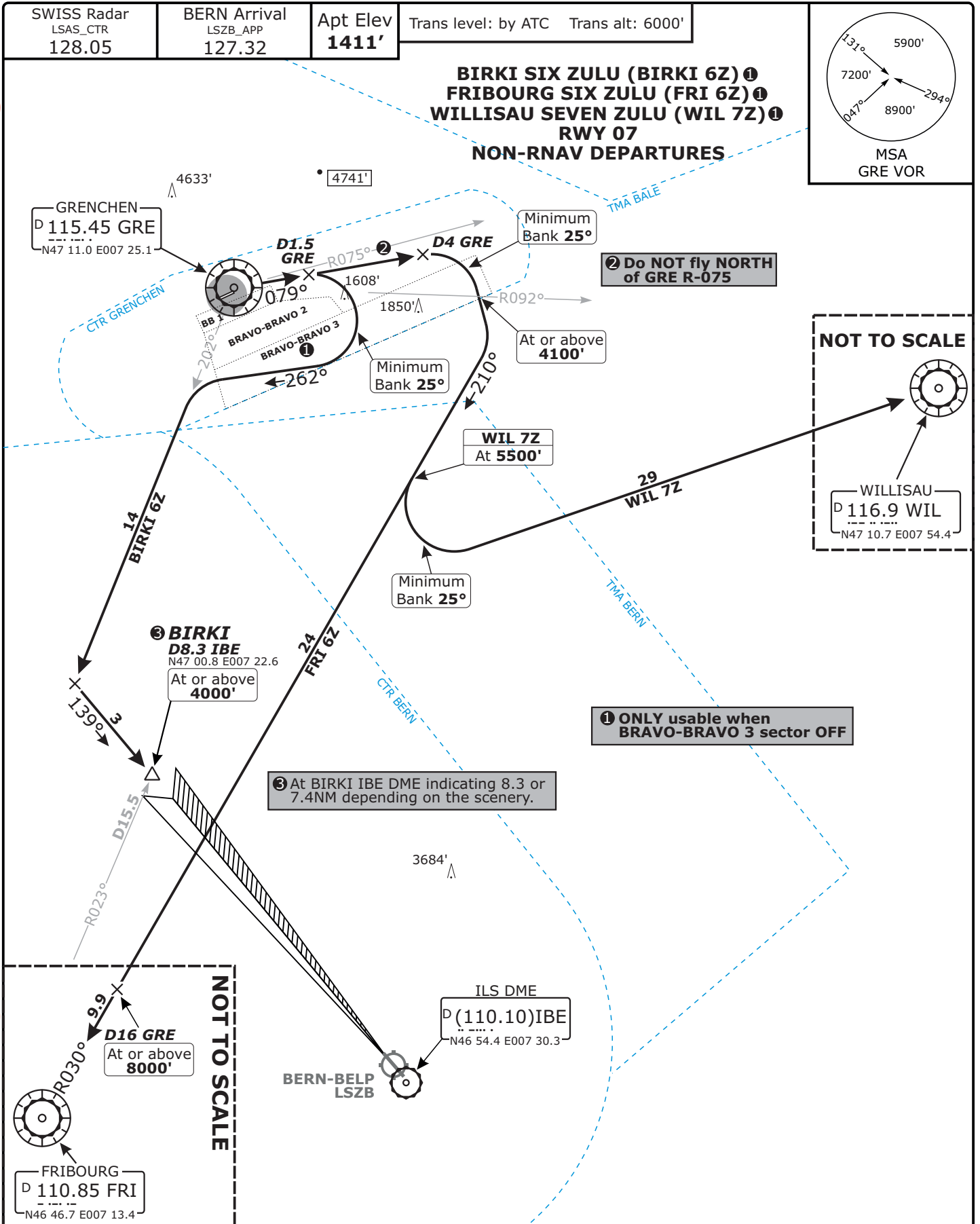


Valid for flight simulation use only - do not use for real life navigation



2 Do NOT fly NORTH of GRE R-075

1 ONLY usable when BRAVO-BRAVO 3 sector OFF

3 At BIRKI IBE DME indicating 8.3 or 7.4NM depending on the scenery.

NOT TO SCALE

SID	ROUTING	INITIAL CLIMB CLEARANCE
BIRKI 6Z ①	Climb straight ahead, intercept GRE R-079, at D1.5 GRE, turn RIGHT (MIN bank 25°), 262° track, intercept GRE R-202, intercept IBE LOC, proceed to BIRKI.	5000'
FRI 6Z ①	Climb straight ahead, intercept GRE R-079, at D4.0 GRE, turn RIGHT (MIN bank 25°), intercept FRI R-030, proceed to FRI.	5000'
WIL 7Z ①	Climb straight ahead, intercept GRE R-079, at D4.0 GRE, turn RIGHT (MIN bank 25°), intercept FRI R-030, at 5500' turn LEFT (MIN bank 25°), proceed to WIL.	6000'

CHANGES: SID revised, airspace structure, BB sectors.