

LSGG/GVA

GENEVA, SWITZERLAND

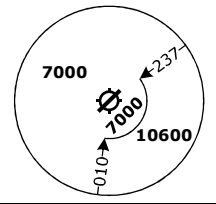
APCH CHART NO. 03
Revision 31 OCT 24

ILS
RWY 22

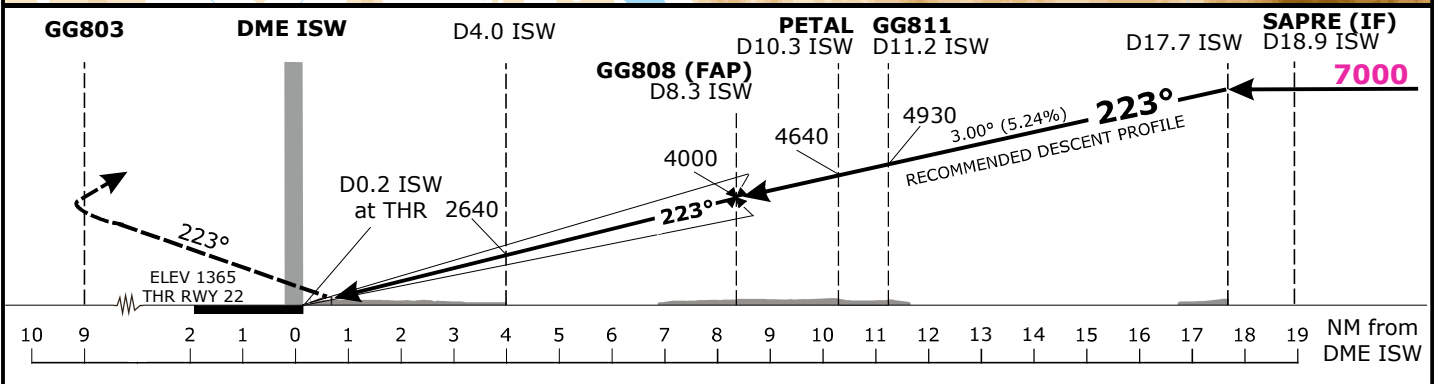
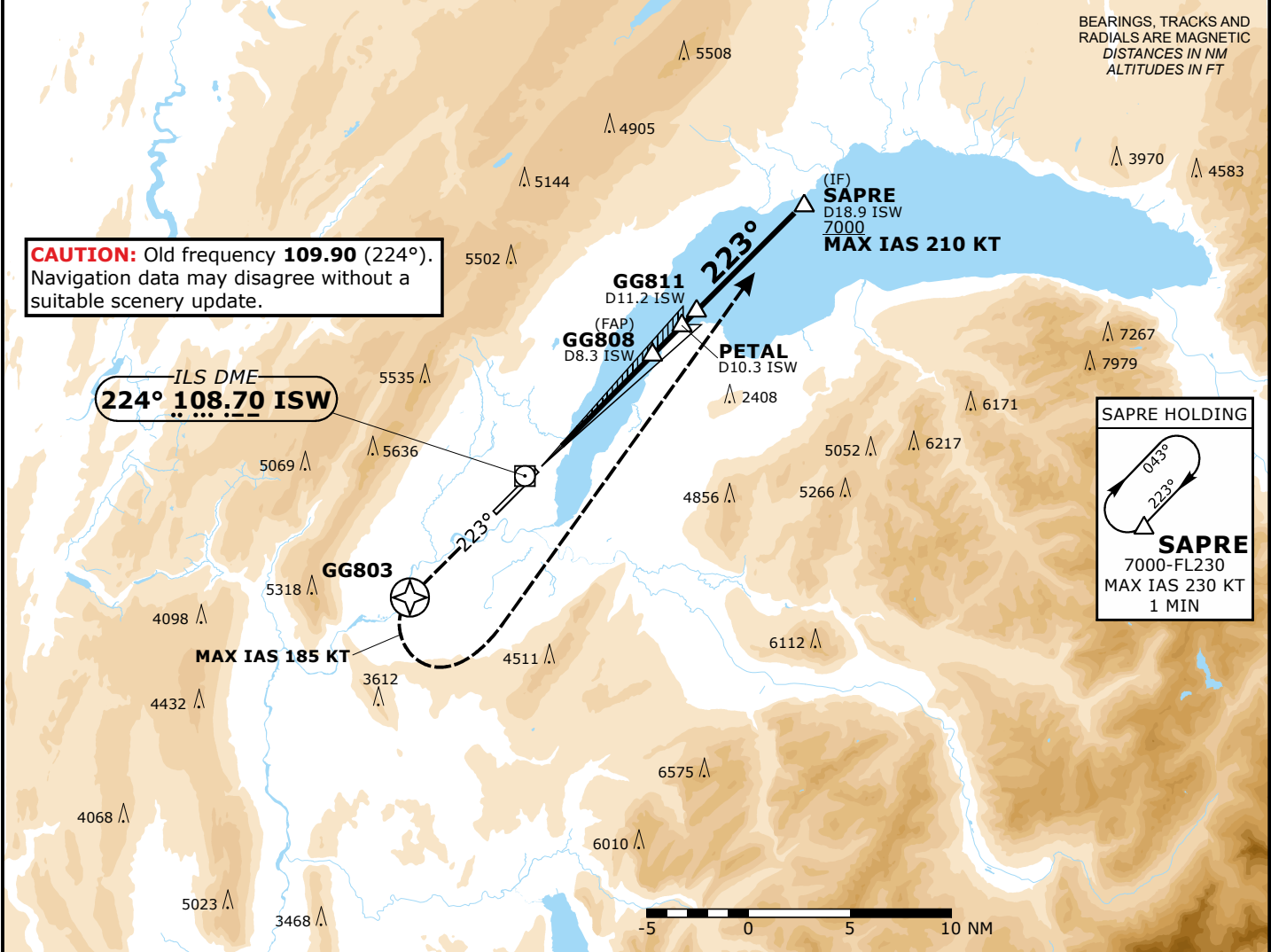
Valid for flight simulation use only - do not use for real life navigation

Frequencies			Missed Approach			
Swiss Radar	135.015	134.850	Climb to 7000. Climb on track 223° to GG803. Turn LEFT (MAX IAS 185 KT during turn) and proceed to SAPRE.	AD ELEV 1411ft	TRANS LVL by ATC	TRANS ALT 7000
Geneva Arrival	124.225	128.905				
Geneva Final	136.255	-				
Geneva Tower	120.305	-				
Geneva Apron	118.700	-				
Geneva ATIS	121.855	-				
	135.580	-				

MSA LSGG ARP
Outer Circle: 25 NM
Inner Circle: 10 NM



BEARINGS, TRACKS AND RADIALS ARE MAGNETIC
DISTANCES IN NM
ALTITUDES IN FT



Minima						
	DA (H)				RA	RVR
	CAT A	CAT B	CAT C	CAT D		
CAT I	1565 (200)				216	550m
CAT II	1465 (100)				108	300m
CAT IIIa	50					200m
CAT IIIb						75m

Changes: Completely revised